

# FICHES D'IDENTIFICATION DU ZOOPLANCTON

Editées par

G. A. ROBINSON

Institute for Marine Environmental Research  
Prospect Place, The Hoe, Plymouth PL1 3DH, England

FICHE NO. 165

## TRACHYMEDUSAE

**Family: Rhopalonematidae**

by

**F. S. Russell**

Marine Biological Association  
The Laboratory, Citadel Hill  
Plymouth, Devon PL1 2 PB, England

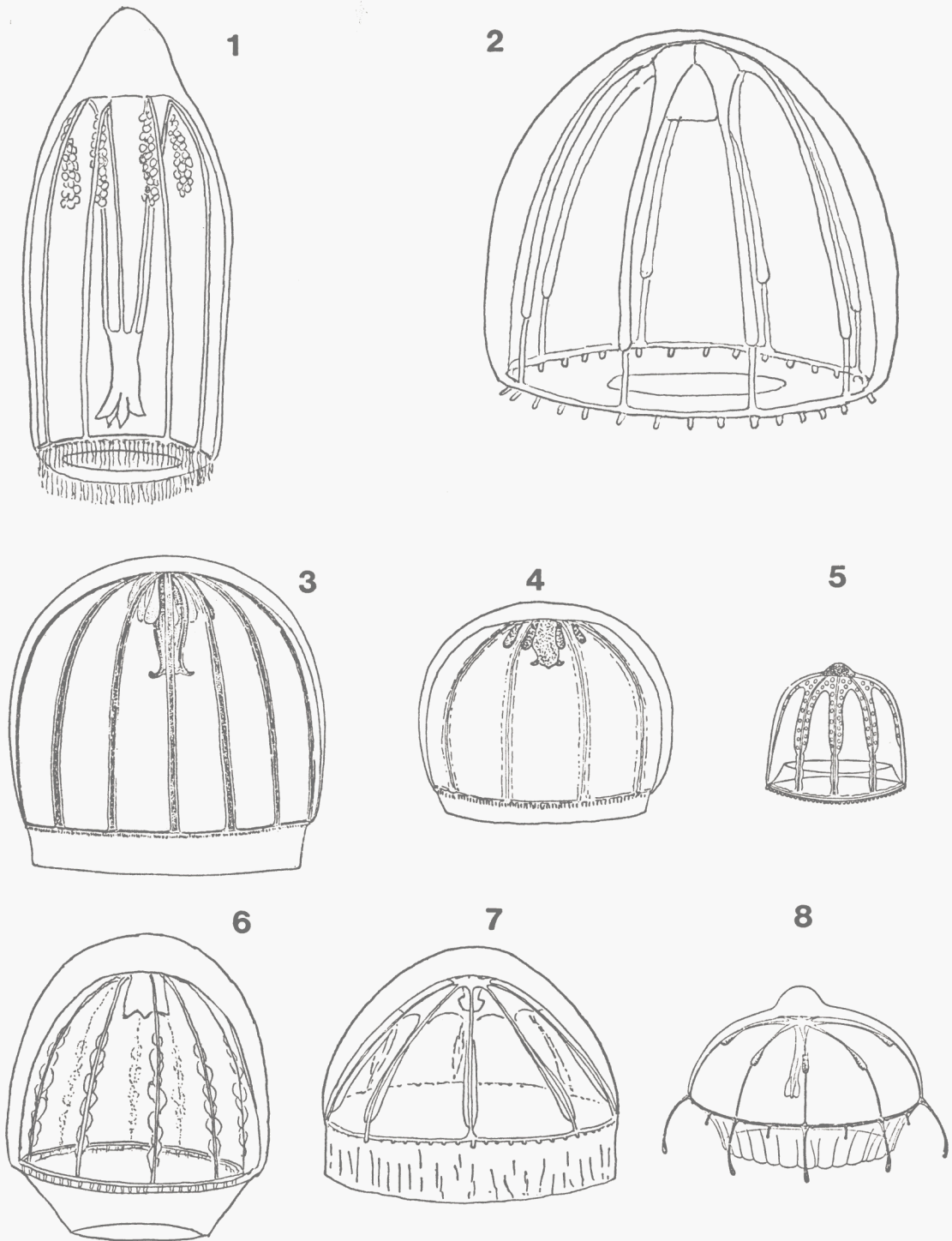
(This publication may be referred to in the following form:  
Russell, F. S. 1981. Trachymedusae. Fich. Ident. Zooplancton 165: 4 pp.)

<https://doi.org/10.17895/ices.pub.5150>

Conseil International pour l'Exploration de la Mer  
Palægade 2-4, DK-1261 Copenhague K, Danemark

NOVEMBRE 1981

ISSN 0443-9155



1. *Aglantha digitale* (after RUSSELL, 1953). - 2. *Colobonema sericeum* (after RUSSELL, 1953). - 3. *Crossota norvegica* (after KRAMP, 1959). - 4. *Crossota rufobrunnea* (after KRAMP, 1959). - 5. *Homoeonema platygonon* (after KRAMP, 1959). - 6. *Pantachogon haeckeli* (after RUSSELL, 1953). - 7. *Rhopalonema funerarium* (after VANHÖFFEN, 1902). - 8. *Rhopalonema velatum* (after MAYER, 1910).

## Order TRACHYMEDUSAE

### Family Rhopalonematidae

Stomach with or without peduncle; usually 8, rarely more, radial canals; gonads on radial canals or hanging as pouches into subumbrellar cavity; numerous marginal tentacles evenly distributed round umbrella margin or arranged in groups, sometimes of two kinds; with free, rarely enclosed, marginal sensory clubs.

#### Genus *Aglantha* Haeckel

Rhopalonematidae with long slender gastric peduncle; with 8 pendent sausage-shaped gonads hanging from subumbrellar portions of 8 radial canals; numerous marginal tentacles of one kind; with free club-shaped marginal sense organs.

##### 1. *Aglantha digitale* (O. F. Müller)

Umbrella tall thimble-shaped with small apical projection; gastric peduncle almost as long as subumbrellar cavity; mouth with 4 simple lips; gonads long, suspended from near base of peduncle; 80 or more marginal tentacles; 8 marginal sense organs. Height of umbrella 10–40 mm; colour pink of varying degrees.

#### Genus *Colobonema* Vanhöffen

Rhopalonematidae without gastric peduncle; with elongated gonads along 8 radial canals; marginal tentacles of one kind; free club-shaped marginal sense organs.

##### 2. *Colobonema sericeum* Vanhöffen

Umbrella bell-shaped, slightly conical, without apical projection; stomach elongated tubular; mouth with 4 small lips; gonads linear along greater part of radial canals; 32 marginal tentacles, with adradial tentacles developed before interradial; marginal sense organs probably alternating with marginal tentacles; broad velum. Umbrella diameter up to 45 mm; height up to 35 mm.

*Note.* Another species, *Colobonema apicatum* Russell, is not figured here as it has only once been recorded so far in areas somewhat south of the area covered by these identification sheets. It differs from *C. sericeum* in having a tall cylindrical *Aglantha*-like umbrella with a small conical projection and with a flat apical circular area without musculature as in *Pantachogon haeckeli*. The umbrella height is up to 10 mm. The specimens were caught in very deep water mostly below 1500 m. (RUSSELL, 1961).

#### Genus *Crossota* Vanhöffen

Rhopalonematidae with or without short gastric peduncle; with numerous meridional furrows on exumbrella; 8 or more radial canals; gonads sausage-shaped pendent from radial canals; numerous densely crowded marginal tentacles all of one kind; free club-shaped marginal sense organs.

##### 3. *Crossota norvegica* Vanhöffen

No gastric peduncle; stomach bottle-shaped with irregular longitudinal ridges; mouth with 5 to 7 upturned lips; 10–14 radial canals; gonads on radial canals near base of stomach; about 275 marginal tentacles; marginal sense organs unknown. Height of umbrella 18 mm; width 20 mm; colour of umbrella deep reddish brown.

##### 4. *Crossota rufobrunnea* (Kramp)

No gastric peduncle; stomach bottle-shaped with 8 deep longitudinal furrows and above them 8 small invaginations; mouth with 4 small out-turned lips; 8 radial canals; gonads on radial canals near base of stomach; about 200–250 marginal tentacles; number of marginal sense organs unknown. Height of umbrella up to 10 mm; width up to 15 mm; colour of umbrella, stomach, and marginal tentacles deep reddish brown.

#### Genus *Homoenema* (Maas) Browne

Rhopalonematidae without gastric peduncle; gonads forming continuous band around base of stomach and extending outwards along 8 radial canals; numerous marginal tentacles all of one kind; with vesicular marginal sense organs.

##### 5. *Homoenema platygonon* Browne

Gonads extending from stomach along half of radial canal; about 80 or more marginal tentacles; 4 marginal sense organs.

#### Genus *Pantachogon* Maas

Rhopalonematidae without gastric peduncle; with apical outlines of subumbrellar muscle fields forming an entire circle; gonads along 8 radial canals separated from stomach; marginal tentacles all of the same kind; with free club-shaped marginal sense organs.

##### 6. *Pantachogon haeckeli* Maas

Umbrella bell-shaped, without apical projection, with very strong conspicuous musculature and 32 exumbrellar furrows; stomach short, mouth with 4 small simple lips; gonads extending along greater part of 8 radial canals; 64 marginal tentacles; 64 marginal sense organs; very broad velum. Height of umbrella about 12 mm, width also about 12 mm.

### Genus *Rhopalonema* Gegenbaur

Rhopalonematidae with gastric peduncle; with gonads along 8 radial canals separated from stomach; marginal tentacles of two kinds; with radial clubs and inter- and adradial cirri; with vesicular marginal sense organs.

#### 7. *Rhopalonema funerarium* Vanhöffen

Umbrella somewhat conical without apical projection; stomach narrow, elongated, not quite reaching umbrella margin; gonads linear along distal two-thirds of radial canal; marginal tentacles, 8 radial simple, 8 interradial, and 16 adradial, very small, cirrus-like, each with globular terminal knob; 32 marginal sense organs; velum very broad. Height of umbrella up to 14 mm; width up to 17 mm.

#### 8. *Rhopalonema velatum* Gegenbaur

Umbrella somewhat flatter than a hemisphere with conical apical thickening; stomach narrow elongated, reaching almost to velar opening, with 4 short simple lips; gonads linear or oval along middle third of radial canal; marginal tentacles, 8 radial club-shaped, 8 interradial, and 16 adradial, very small, cirrus-like; a marginal sense organ near each radial tentacle and each interradial cirrus-like tentacle; velum very broad. Width of umbrella 8–10 mm.

### FURTHER INFORMATION ON IDENTIFICATION

1. *Aglantha digitale*. BIGELOW, 1909, p. 122. KRAMP, 1924, p. 29; 1959, p. 191; 1961, p. 248. RUSSELL, 1953, p. 447.
2. *Colobonema sericeum*. VANHÖFFEN, 1902, p. 57. MAAS, 1905, p. 52. RUSSELL, 1953, p. 436. KRAMP, 1959, p. 186; 1961, p. 255.
3. *Crossota norvegica*. KRAMP, 1947, p. 21; 1959, p. 191; 1961, p. 257.
4. *Crossota rufobrunnea*. KRAMP, 1947, p. 21; 1959, p. 191; 1961, p. 257. RUSSELL, 1953, p. 444.
5. *Homoeonema platygonon*. BROWNE, 1903, p. 21. KRAMP, 1959, p. 185; 1961, p. 258.
6. *Pantachogon haeckeli*. VANHÖFFEN, 1902, p. 63. MAYER, 1910, p. 389. KRAMP, 1947, p. 19; 1959, p. 186; 1961, p. 259. RUSSELL, 1953, p. 440.
7. *Rhopalonema funerarium*. VANHÖFFEN, 1902, p. 61. KRAMP, 1947, p. 14; 1959, p. 185; 1961, p. 261. RUSSELL, 1953, p. 434.
8. *Rhopalonema velatum*. MAYER, 1910, p. 378. RUSSELL, 1953, p. 430. KRAMP, 1959, p. 185; 1961, p. 262.

### DISTRIBUTION

All the species are oceanic and can be roughly divided as follows.

<i>Epipelagic</i>	Arctic: <i>Homoeonema platygonon</i> Arctic-Boreal: <i>Aglantha digitale</i> and <i>Rhopalonema velatum</i>
<i>Bathypelagic</i>	Arctic: <i>Crossota norvegica</i> Arctic-Boreal: <i>Pantachogon haeckeli</i> Boreal: <i>Crossota rufobrunnea</i> Boreal, extending into warm water: <i>Colobonema sericeum</i> and <i>Rhopalonema funerarium</i>

### REFERENCES

- BIGELOW, H. B. 1909. Report of the Scientific Results of the Expedition to the Eastern Tropical Pacific by the U.S. Fish Commission Steamer 'Albatross'. XVI. The Medusae. Mem. Mus. comp. Zool. Harv., 37: 1–243, 48 Pls.
- BROWNE, E. T. 1903. Report on some Medusae from Norway and Spitzbergen. Bergens Mus. Årb., 4: 1–36.
- KRAMP, P. L. 1924. Medusae. Rep. Dan. oceanogr. Exped. Mediterr. (1908–1910). II, Biol. H 1: 1–67.
- KRAMP, P. L. 1947. Medusae. Part III. Trachylina and Scyphozoa with zoogeographical remarks on all the Medusae of the North Atlantic. Danish Ingolf-Exped. 5: 1–66. 5 Pls.
- KRAMP, P. L. 1959. The Hydromedusae of the Atlantic Ocean and adjacent waters. Dana Rep., 46: 1–238, 2 Pls.
- KRAMP, P. L. 1961. Synopsis of the Medusae of the world. J. mar. biol. Ass. U.K., 40: 1–469.
- MAAS, O. 1905. Die Craspedoten Medusen der Siboga-Expedition. Monogr. X: 1–85, 14 Pls.
- MAYER, A. G. 1910. Medusae of the world. II, Hydro-medusae: 231–498.
- RUSSELL, F. S. 1953. The Medusae of the British Isles. Cambridge Univ. Press, 1–530, 35 Pls.
- RUSSELL, F. S. 1961. A new deep-water Trachymedusa. J. mar. biol. Ass. U.K., 41: 1–3.
- VANHÖFFEN, E. 1902. Die Craspedoten Medusen der deutschen Tiefsee-Expedition 1898–1899. I. Trachymedusen. Wiss. Ergebn. dt. Tiefsee-Exped. 'Valdivia', 19 (5): 191–233, 1 Pl.