

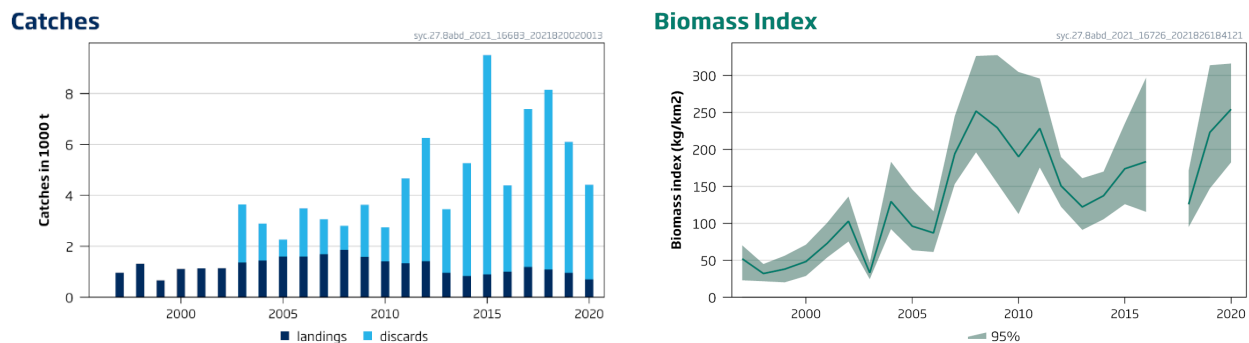
## Lesser-spotted dogfish (*Scyliorhinus canicula*) in divisions 8.a–b and 8.d (Bay of Biscay)

### ICES advice on fishing opportunities

ICES has not been requested to provide advice on fishing opportunities for this stock.

### Stock development over time

ICES cannot assess the stock and exploitation status relative to maximum sustainable yield (MSY) and precautionary approach (PA) reference points because the reference points are undefined.



**Figure 1** Lesser-spotted dogfish in divisions 8.a–b and 8.d. Summary of the stock assessment. Left: ICES estimated catches of lesser-spotted dogfish since 1997. Discard data are from France, Belgium, and Spain, with more complete data from 2011 onwards. Right: total biomass index derived from the EVHOE-WIBTS-Q4 survey (kg/km<sup>2</sup>) (G9527). The survey was incomplete in 2017. 95% confidence intervals are shaded.

### Catch scenarios

ICES has not been requested to provide advice on fishing opportunities for this stock.

### Basis of the advice

ICES has not been requested to provide advice on fishing opportunities for this stock.

**Table 1** Lesser-spotted dogfish in divisions 8.a–b and 8.d. The basis of the advice.

Advice basis	No advice requested
Management plan	ICES is not aware of any agreed precautionary management plan for lesser-spotted dogfish in this area

### Quality of the assessment

There were minor changes to the biomass index, as this is now based on DATRAS data instead of the national survey data used in previous advice (ICES, 2021b).

Historical series of discards were updated in 2019 (ICES, 2019). Whilst annual estimates of discards are variable, available discards data show that a proportion of 50–80% of the catch may be discarded,

### Issues relevant for the advice

Scyliorhinid species are productive in comparison to other demersal elasmobranchs (McCully Phillips *et al.* 2015).

Discard survival occurs and can be around 70–98% in some métiers and areas (Revill *et al.*, 2005; Rodriguez-Cabello *et al.*, 2005) but has not been estimated for all the métiers.

## Reference points

No reference points are defined for this stock.

## Basis of the assessment

**Table 2** Lesser-spotted dogfish in divisions 8.a–b and 8.d. Basis of the assessment and advice.

ICES stock data category	3 ( <a href="#">ICES, 2021a</a> )
Assessment type	Survey trends-based assessment (ICES, 2021b)
Input data	Survey EVHOE-WIBTS-Q4 (G9527)
Discards and bycatch	Partly quantified from 2003 and more comprehensively from 2011
Indicators	None
Other information	None
Working group	Working Group on Elasmobranch Fishes ( <a href="#">WGEF</a> )

## History of the advice, catch, and management

**Table 3** Lesser-spotted dogfish in divisions 8.a–b and 8.d. History of ICES advice, agreed TAC and species-specific estimates of landings, discards and catch. All weights are in tonnes.

Year	ICES advice	Catch corresp. to advice	Landings corresp. to advice	Agreed TAC	ICES estimates of landings *	ICES estimates of discards	ICES estimates of catch
2005	No advice			No TAC	1597	672	2269
2006	No advice			No TAC	1598	1896	3494
2007	No advice			No TAC	1691	1371	3062
2008	No advice			No TAC	1863	941	2804
2009	No advice		< 1800	No TAC	1586	2046	3632
2010	No advice		< 1800	No TAC	1415	1323	2738
2011	Maintain catch at recent level		< 1700	No TAC	1330	3342	4672
2012	No new advice, same as for 2011		< 1700	No TAC	1418	4835	6253
2013	Increase catch by a maximum of 20% + no species-specific TAC			No TAC	960	2497	3456
2014	No new advice, same as for 2013			No TAC	838	4432	5270
2015	No new advice, same as for 2014			No TAC	892 **	8616	9508
2016	Decrease by 20% compared to the average catches in 2012–2014			No TAC	1002 **	3397	4399
2017	Same catch advice as advised for 2016			No TAC	1195	6193	7388
2018	Precautionary approach	≤ 5592	≤ 611	No TAC	1093 **	7056	8149
2019	Precautionary approach (same advice as for 2018)	≤ 5592	≤ 611	No TAC	957	5143	6100
2020	No catch advice requested	-	-	No TAC	702	3717	4419
2021	No catch advice requested	-	-	No TAC			
2022	No catch advice requested	-	-				
2023	No catch advice requested	-	-				

\* Data do not include generic “dogfishes & hounds”.

\*\* Data were revised in 2021

## History of the catch and landings

The distribution of this species may extend into the NEAFC Regulatory Area, but the main component of the stock occurs in shelf seas. Estimated landings are presented in Table 5; however, total catches from the NEAFC Regulatory Area are not quantified and are assumed negligible.

**Table 4** Lesser-spotted dogfish in divisions 8.a–b and 8.d. Catch distribution by fleet in 2020 as estimated by ICES.

Catch (2020)	Landings				Discards
	Bottom and otter trawl 80%	Hook and lines 4%	Nets 10%	All other gears 6%	
4419 tonnes	702 tonnes				3717 tonnes

**Table 5** Lesser-spotted dogfish in divisions 8.a–b and 8.d. ICES species-specific estimated landings and discards (in tonnes).

Year	Belgium	France	Spain	UK	Ireland	Total landings *
2005	10	1229	355	3	0	1597
2006	13	1247	338	0	0	1598
2007	13	1352	327	0	0	1691
2008	18	1382	460	0	2	1863
2009	24	1117	445	0	0	1586
2010	28	1085	302	0	0	1415
2011	28	1000	303	0	0	1330
2012	32	912	472	2	0	1418
2013	23	883	54	0	0	960
2014	26	720	92	0	0	838
2015	27	735	130	0	0	892
2016	32	731	239	0	0	1002
2017	26	671	498	0	0	1195
2018	25	698	370	0	0	1093
2019	24	600	332	0	0	957
2020	20	459	223	0	0	702

\* Data revised in 2021

## Summary of the assessment

**Table 6** Lesser-spotted dogfish in divisions 8.a–b and 8.d. Assessment summary. Biomass index (kg km<sup>-2</sup>) derived from the EVHOE–WIBTS–Q4 trawl survey (G9527).

Year	Lower CI (2.5)	Biomass index	Upper CI (97.5)
1997	22	52	70
1998	21	32	45
1999	20	38	56
2000	29	48	71
2001	54	73	101
2002	75	103	136
2003	24	33	47
2004	92	130	183
2005	64	96	146
2006	61	87	116
2007	153	194	245
2008	196	252	326
2009	154	229	328
2010	113	190	305
2011	175	228	296
2012	122	151	190
2013	91	122	161
2014	106	137	170
2015	126	174	235
2016	115	183	297
2017	-	-	-
2018	95	126	171
2019	147	223	314
2020	183	254	316

## Sources and references

- ICES. 2019. Working Group on Elasmobranch Fishes (WGEF). ICES Scientific Reports. 1:25. <http://doi.org/10.17895/ices.pub.5594>
- ICES. 2021a. Advice on fishing opportunities. *In* Report of the ICES Advisory Committee, 2021. ICES Advice 2021, section 1.1.1. <https://doi.org/10.17895/ices.advice.7720>.
- ICES. 2021b. Working Group on Elasmobranch Fishes (WGEF). ICES Scientific Reports, 3:59. <http://doi.org/10.17895/ices.pub.8199>.
- McCully Phillips, S. R., Scott, F. and Ellis, J. R. 2015. Having confidence in Productivity Susceptibility Analyses: A method for underpinning scientific advice on skate stocks? *Fisheries Research*, 171: 87–100.
- Revell, A. S., Dulvy, N. K., and Holst, R. 2005. The survival of discarded lesser-spotted dogfish (*Scyliorhinus canicula*) in the Western English Channel beam trawl fishery. *Fisheries Research*, 71: 121–124. <https://doi.org/10.1016/j.fishres.2015.01.005>.
- Rodríguez-Cabello, Fernández, A., Olaso, I., and Sánchez, F. 2005. Survival of small-spotted catshark (*Scyliorhinus canicula*) discarded by trawlers in the Cantabrian Sea. *Journal of the Marine Biological Association of the UK*, 85(05): 1145–1150. <https://doi.org/10.1017/S002531540501221X>.

[Download the stock assessment data and figures.](#)

*Recommended citation:* ICES. 2021. Lesser spotted dogfish (*Scyliorhinus canicula*) in divisions 8.a-b and 8.d (Bay of Biscay). *In* Report of the ICES Advisory Committee, 2021. ICES Advice 2021, syc.27.8abd, <https://doi.org/10.17895/ices.advice.7873>.