

Black-mouthed dogfish (*Galeus melastomus*) in Subarea 8 and Division 9.a (Bay of Biscay and Atlantic Iberian waters)

ICES advice on fishing opportunities

ICES has not been requested to provide advice on fishing opportunities for this stock.

Stock development over time

ICES cannot assess the stock and exploitation status relative to maximum sustainable yield (MSY) and precautionary approach (PA) reference points because the reference points are undefined.

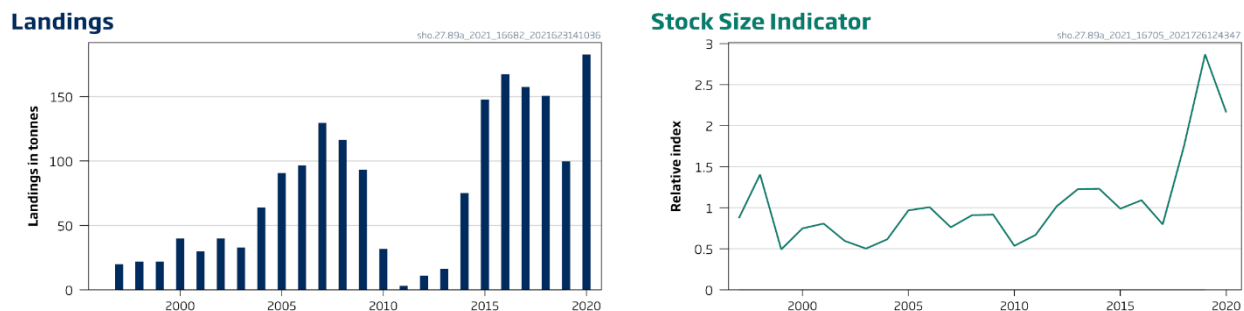


Figure 1 Black-mouthed dogfish in Subarea 8 and Division 9.a. Summary of the stock assessment. Left: ICES estimates of species-specific landings of black-mouthed dogfish since 1997. Right: the stock-size indicator is the mean normalized biomass index from the average of the two Spanish surveys SP-GCGFS-WIBTS-Q1 (G7511) and SP-GCGFS-WIBTS-Q4 (G4309), as well as EVHOE-WIBTS-Q4 (G9527) and PT-CTS (UWTV [FU 28–29]; G2913). PT-CTS(UWTV [FU 28–29]) was not conducted in 2019 or 2020.

Catch scenarios

ICES has not been requested to provide advice on fishing opportunities for this stock.

Basis of the advice

ICES has not been requested to provide advice on fishing opportunities for this stock.

Table 1 Black-mouthed dogfish in Subarea 8 and Division 9.a. The basis of the advice.

Advice basis	No advice requested
Management plan	ICES is not aware of any agreed precautionary management plan for black-mouthed dogfish in this area

Quality of the assessment

There were minor changes to the biomass index derived for EVHOE-WIBTS-Q4, as this is now based on DATRAS data instead of the national survey data used in previous advice (ICES, 2021a).

Landings data are not fully reliable for this species, because some are reported in the generic “dogfish” category and therefore not allocated to this stock. In addition, misidentification problems are likely to exist, especially in Division 9.a, where the Atlantic sawtail catshark (*Galeus atlanticus*) also occurs.

PT-CTS (UWTV [FU 28–29]) was not conducted in either 2019 because of technical problems or 2020 because of the COVID-19 pandemic. This survey series showed similar trends to the other surveys prior to this time, and the absence of 2019–2020 data from this survey is not expected to change the perception of the stock (ICES, 2021a). Consequently, this survey series was included in the stock-size indicator in the period 1997–2018.

Issues relevant for the advice

This stock is classified as Category 2 in the NEAFC categorization of deep-sea species/stocks (NEAFC, 2016) which implies that NEAFC requires measures stipulating that directed fisheries are not authorized and that bycatches should be minimized.

Scyliorhinids are productive species in comparison to other demersal elasmobranchs (McCully Phillips *et al.*, 2015).

Discarding is variable and has not been fully quantified. Discard survival is also unquantified. The discard rate was likely to have been higher between 2010 and 2013, when EU regulations listed this species as a deep-water shark for which no landings were allowed at that time (ICES, 2021).

Reference points

No reference points are defined for this stock.

Basis of the assessment

Table 2 Black-mouthed dogfish in Subarea 8 and Division 9.a. Basis of the assessment and advice.

ICES stock data category	3 (ICES, 2021b)
Assessment type	Survey-based trends (ICES, 2021a)
Input data	Surveys: EVHOE-WIBTS-Q4 (G9527), PT-CTS (UWTV [FU 28–29]; D2913), SP-GCGFS-WIBTS-Q1 (G7511), and SP-GCGFS-WIBTS-Q4 (G4309)
Discards and bycatch	Unknown
Indicators	None
Other information	None
Working group	Working Group on Elasmobranch Fishes (WGEF)

History of the advice, catch, and management

Table 3 Black-mouthed dogfish in Subarea 8 and Division 9.a. ICES advice and ICES species-specific estimated landings. All weights are in tonnes.

Year	ICES advice	Landings corresp. to advice	Agreed TAC	ICES landings*
2003				33
2004				64
2005	No advice		No TAC **	91
2006	No advice		No TAC **	97
2007	No advice		No TAC **	130
2008	No advice		No TAC **	116
2009	No advice		No TAC **	93
2010	No advice		No TAC ***	32
2011	No advice		No TAC ***	3
2012	No advice		Zero TAC ^	11
2013	No advice	-	Zero TAC/No TAC ^^	16
2014	No advice	-	No TAC	75
2015	No advice	-	No TAC	148
2016	Decrease by 4% compared to the average catches in 2012–2014	-	No TAC	167
2017	Same catch value as advised for 2016	-	No TAC	158
2018	Precautionary approach	≤ 156	No TAC	151 ^^^
2019	Precautionary approach (same advice as for 2018)	≤ 156	No TAC	100
2020	No catch advice requested	-	No TAC	183
2021	No catch advice requested	-	No TAC	
2022	No catch advice requested	-		
2023	No catch advice requested	-		

* Data revised in 2016 (ICES, 2016). These are minimum estimates based on reported landings and do not include landings of black-mouthed dogfish reported in generic categories.

** Black-mouthed dogfish was included in the TAC for “deep-sea sharks” in the EU and international waters of ICES subareas 6–9.

*** Black-mouthed dogfish was included in the bycatch TAC for “deep-sea sharks” in the EU and international waters of ICES subareas 6–9.

^ TAC for “deep-sea sharks” was zero.

^^ Black-mouthed dogfish was removed from the list of “deep-sea sharks” in an in-year amendment (EU, 2013).

^^^ Data revised in 2021.

History of the catch and landings

The distribution of this stock extends into the NEAFC Regulatory Area, but the proportional split of catches cannot be determined. No catches of this stock have been reported in the NEAFC Regulatory Area.

Table 4 Black-mouthed dogfish in Subarea 8 and Division 9.a. Catch distribution by fleet in 2020 as estimated by ICES.

Catch (2020)	Landings				Discards
	Bottom trawls	Misc. gear	Nets	Hooks and lines	
Unknown	68%	22%	7%	3%	Unknown
183 tonnes					

Table 5 Black-mouthed dogfish in Subarea 8 and Division 9.a. ICES species-specific estimated landings by country (in tonnes). Blank cell = no data reported; 0 = value less than 0.5.

Year	France	Spain	UK	Portugal	Total
2005	1	53		37	91
2006	1	68		28	97
2007	2	103		24	130
2008	2	103		12	116
2009	3	75		16	93
2010	0	24		7	32
2011	0		1	2	3
2012	1	8		2	11
2013	0	15		1	16
2014	1	54		21	75
2015		123		25	148
2016		141		26	167
2017	0	124		34	158
2018	0	119 *		31	151 *
2019	0	65		35	100
2020		140		42	183

* Data revised in 2021.

Summary of the assessment

Table 6 Black-mouthed dogfish in Subarea 8 and Division 9.a. Assessment summary. Biomass indices were derived from four trawl surveys (EVHOE-WIBTS-Q4 [9527], PT-CTS [UWTV {FU 28–29}; G2913], SP-GCGFS-WIBTS-Q1 [G7511], and SP-GCGFS-WIBTS-Q4 [G4309]). SP-GCGFS-WIBTS-Q1 and SP-GCGFS-WIBTS-Q4 were averaged. The stock-size indicator is the annual mean of the normalized surveys indices.

Year	EVHOE-WIBTS-Q4	SP-GCGFS-WIBTS-Q1-Q4	PT-CTS (UWTV [FU 28–29])	Stock-size indicator
1997	0.27	0.34	2.0	0.87
1998	0.161	1.90	2.2	1.41
1999	0.135	0.36	0.98	0.49
2000	0.27	1.29	0.69	0.75
2001	0.66	1.18	0.58	0.81
2002	0.41	0.80	0.58	0.60
2003	0.23	0.54	0.74	0.50
2004	0.38	1.05	0.42	0.62
2005	0.50	2.1	0.29	0.97
2006	0.37	2.1	0.59	1.01
2007	0.81	0.57	0.90	0.76
2008	0.66	0.97	1.10	0.91
2009	0.95	0.74	1.07	0.92
2010	0.61	0.44	0.56	0.54
2011	0.42	0.48	1.11	0.67
2012	0.80	1.24	NA	1.02
2013	0.60	2.0	1.05	1.23
2014	1.05	1.29	1.36	1.23
2015	1.10	0.81	1.06	0.99
2016	1.43	0.77	1.07	1.09
2017	NA	1.07	0.53	0.80
2018	2.3	0.83	2.2	1.75
2019	5.3	0.48	NA	2.9
2020	3.7	0.65	NA	2.2

Sources and references

EU. 2013. Council Regulation (EU) No. 1182/2013 of 19 November 2013 amending Regulations (EC) No. 754/2009, (EU) No. 1262/2012, (EU) No. 39/2013 and (EU) No. 40/2013 as regards certain fishing opportunities. Official Journal of the European Union, L 313: 15–29. <http://data.europa.eu/eli/reg/2013/1182/oj>.

ICES. 2016. Report of the Workshop to compile and refine catch and landings of elasmobranchs (WKSHARK2), 19–22 January 2016, Lisbon, Portugal. ICES CM 2016/ACOM:40. 69 pp.

ICES. 2021a. Advice on fishing opportunities. *In* Report of the ICES Advisory Committee, 2021. ICES Advice 2021, section 1.1.1. <https://doi.org/10.17895/ices.advice.7720>.

ICES. 2021b. Working Group on Elasmobranch Fishes (WGEF). ICES Scientific Reports. 3:59. <http://doi.org/10.17895/ices.pub.8199>

McCully Phillips, S. R., Scott, F. and Ellis, J. R. 2015. Having confidence in Productivity Susceptibility Analyses: A method for underpinning scientific advice on skate stocks? *Fisheries Research*, 171: 87–100.

NEAFC. 2016. The NEAFC approach to conservation and management of deep-sea species and categorization of deep-sea species/stocks. Adopted at the 35th Annual Meeting, November 2016 https://www.neafc.org/system/files/NEAFC_approach_to_DSS_conservation-and-management_Nov16.pdf.

[Download the stock assessment data and figures.](#)

Recommended citation: ICES. 2021. Black-mouth dogfish (*Galeus melastomus*) in Subarea 8 and Division 9.a (Bay of Biscay and Atlantic Iberian waters). *In* Report of the ICES Advisory Committee, 2021. ICES Advice 2021, sho.27.89a, <https://doi.org/10.17895/ices.advice.7857>.