

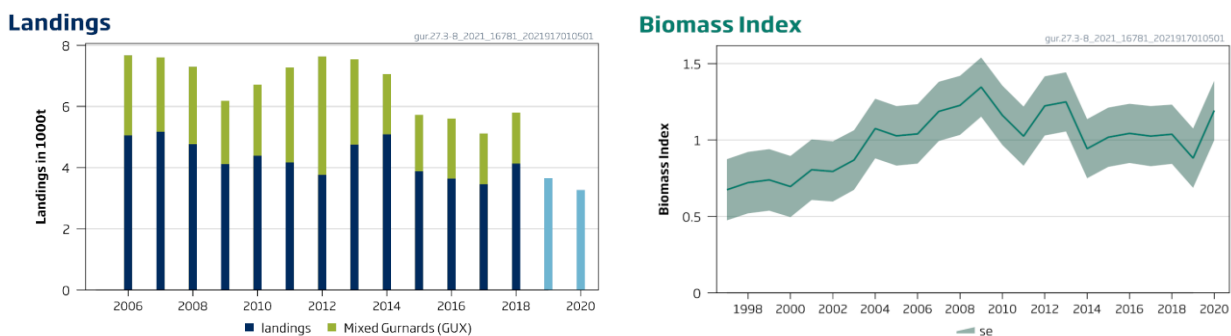
## Red gurnard (*Chelidonichthys cuculus*) in subareas 3–8 (Northeast Atlantic)

### ICES advice on fishing opportunities

ICES cannot provide advice on fishing opportunities for this stock due to a lack of reliable catch data.

### Stock development over time

ICES cannot assess the stock and exploitation status relative to MSY and precautionary approach (PA) reference points because the reference points are undefined.



**Figure 1** Red gurnard in subareas 3–8. Summary of the stock assessment. Official landings of red gurnards and “mixed” gurnards in subareas 3–8 (2006–2018). Landings data for 2019 and 2020 corresponds only to the landings reported as red gurnards GUR (light blue). The biomass index is for red gurnard only.

### Catch scenarios

The biomass index shows an increasing trend up to the mid 2000s, and since then it has fluctuated without trend. However, without accurate landings data resolved to species level and reliable information on discards it is not possible to provide catch scenarios.

### Basis of the advice

**Table 1** Red gurnard in subareas 3–8. The basis of the advice.

Advice basis	Precautionary approach
Management plan	ICES is not aware of any management plan for red gurnard in this area

### Quality of the assessment

A number of surveys reporting red gurnard have been examined and an index developed which describes changes in biomass across the stock distribution area from 1997 onwards (ICES, 2021c).

### Issues relevant for the advice

Reporting by species continues to be a major problem in estimating the landings of all gurnards and thus also red gurnard. Sampling under the Data Collection Framework (DCF) regulation is the main source of information to estimate the total landings of red gurnard. Mixed gurnard landings are known to contain red gurnard, but the proportion cannot presently be quantified and therefore the reported landings in tables 3–7 represent minimum estimates. This assessment requires estimates of both red and “mixed” landings in order to provide advice. Landings data provided for 2019 and 2020 corresponds only to the landings reported as red gurnards.

Discarding is estimated to be high in some fisheries. Reported discard rates range from 14% to 94% of the catches of specific fleets.

The collection of species-specific data on landings and discards of red gurnard is required for ICES to provide catch advice.

### Reference points

There are no reference points defined for this stock.

### Basis of the assessment

**Table 2** Red gurnard in subareas 3–8. Basis of the assessment and advice.

ICES stock data category	3 ( <a href="#">ICES, 2021a</a> )
Assessment type	Survey trends-based assessment (ICES, 2021b)
Input data	Scottish West Coast Groundfish Surveys, Q1 and Q4 (G4748 & G4815), Scottish West Coast IBTS Q1 and Q4 (G1179 & G4299), Western Channel Beam Trawl Survey (BTS; B2732), French Channel Groundfish Survey (G3425), French Southern Atlantic Bottom Trawl Survey (EVHOE; G9527) and Irish Groundfish Survey (IE-IGFS; G7212).
Discards and bycatch	Discarding is known to take place, but discards cannot be fully quantified
Indicators	Non
Other information	This stock was benchmarked at WKWEST in 2021 (ICES, 2021c)
Working group	Working Group on Widely Distributed Stocks ( <a href="#">WGWIDE</a> )

### History of the advice, catch, and management

**Table 3** Red gurnard in subareas 3–8. ICES advice as well as official and ICES landings. All weights are in tonnes.

Year	ICES advice	Landings corresponding to advice	Agreed TAC	Official landings	ICES estimates
2006		-	None	5044	
2007		-	None	5047	
2008		-	None	4663	
2009		-	None	3966	
2010		-	None	4277	
2011		-	None	4028	
2012	No increase in catch	-	None	3626	
2013	20% reduction in catches	-	None	4598	
2014	Same catch value as advised for 2013	-	None	4945	
2015	Same catch value as advised for 2013	-	None	3743	
2016	Precautionary approach (decrease catches by at least 20%)	≤ 3618	None	3526	3547
2017	Precautionary approach (same advised catch value as given for 2016)	≤ 3618	None	3311	3061
2018	Precautionary approach	≤ 3618	None	4014	3983
2019	Precautionary approach (same advised catch value as given for 2018)	≤ 3618	None	3529*	
2020	Precautionary approach (decrease catches by at least 20%)	≤ 2894	None	3138*	
2021	Precautionary approach (same advised catch value as given for 2020)	≤ 2894	None		
2022	No advice	-			
2023	No advice	-			

\* Preliminary.

### History of the catch and landings

**Table 4** Red gurnard in subareas 3–8. Catch distribution by fleet in 2020 as officially reported as red gurnard to ICES.

Catch	Landings *	Discards
Unknown	100% undefined gears	Unknown
	3138 tonnes	

\* Preliminary.

**Table 5** Red gurnard in subareas 3–8. History of commercial landings are presented by country. All weights are in tonnes.

Year	Belgium	Spain	France	Jersey	Guernsey	Ireland	Isle of Man	Netherlands	Portugal	UK	Total
2006	313	0	4550	0	10	0	0	57	0	115	5054
2007	328	0	4494	1	4	0	0	66	0	156	5049
2008	352	0	4045	0	8	0	0	92	0	166	4663
2009	227	0	3307	0	6	0	1	160	1	263	3966
2010	237	0	3426	0	2	0	0	251	0	362	4278
2011	306	0	3168	1	2	0	1	295	1	257	4029
2012	306	0	2698	3	4	26	0	329	7	257	3629
2013	288	532	3152	3	9	16	2	267	0	329	4598
2014	263	366	3781	3	6	0	5	241	1	283	4946
2015	187	82	2919	2	3	0	0	210	1	341	3744
2016	238	71	2598	3	2	9	1	224	0	381	3526
2017	265	76	2396	0	1	9	4	226	0	335	3311
2018	313	77	2968	0	0	13	1	302	0	342	4014
2019 *	289	80	2436	0	0	9	0	238	0	478	3529
2020 *	211	101	2327	0	0	10	1	235	0	254	3138

\* Preliminary.

**Table 6** Red gurnard in subareas 3–8. History of commercial landings; official values are presented by area. All weights are in tonnes.

Year	ICES divisions																				Total		
	3.a	4.a	4.b	4.c	5.b	6.a	6.b	7.a	7.b	7.c	7.d	7.e	7.f	7.g	7.h	7.j	7.k	8.a	8.b	8.c		8.d	8.e
2006	0	13	83	64	0	32	1	11	9	12	1101	2803	229	16	446	5	0	153	60	1	5	0	5044
2007	0	12	120	55	2	21	0	7	7	15	1229	2674	246	15	437	4	0	139	59	3	2	0	5047
2008	0	34	64	54	0	28	3	5	7	16	1236	2451	249	9	408	5	0	66	24	3	1	0	4663
2009	0	58	59	92	0	94	2	4	8	6	1293	1557	112	22	510	7	0	98	40	1	3	0	3966
2010	0	79	63	86	0	101	46	13	8	10	1531	1608	132	23	433	9	0	100	33	0	2	0	4277
2011	0	66	29	51	0	69	54	13	5	6	1295	1753	124	20	372	9	0	112	46	1	3	0	4028
2012	0	83	71	78	0	51	7	8	2	5	1244	1441	145	53	294	2	0	83	50	8	1	0	3626
2013	0	88	109	60	0	47	0	10	2	6	1193	1692	170	58	477	2	0	79	72	532	1	0	4598
2014	0	102	52	68	0	47	3	7	1	2	1294	1642	115	19	1069	1	0	82	75	363	3	0	4945
2015	0	133	102	53	0	58	1	4	3	1	790	1553	87	6	703	1	0	95	70	81	2	0	3743
2016	0	112	83	117	0	76	1	11	3	1	906	1270	114	16	608	1	0	87	63	56	1	0	3526
2017	0	53	44	90	0	27	1	14	1	0	874	1424	83	38	473	3	0	78	48	59	1	0	3311
2018	0	109	40	113	0	43	0	7	0	0	903	1785	164	28	631	4	0	80	43	62	2	0	4014
2019*	0	128	19	73	0	84	0	13	1	0	952	1499	74	28	477	0	5	74	37	65	0	0	3529
2020*	0	58	13	65	2	53	4	10	1	4	680	1504	90	19	425	4	0	69	51	87	1	0	3138

\* Preliminary.

## Summary of the assessment

**Table 7** Red gurnard in Subareas 3 - 8. Assessment Summary. All weights are in tonnes.

Year	Biomass index	Red gurnard landings	'Mixed' gurnard landings *	Unidentified/tub gurnard landings*
1997	0.674			
1998	0.721			
1999	0.739			
2000	0.695			
2001	0.806			
2002	0.794			
2003	0.869			
2004	1.075			
2005	1.027			
2006	1.040	5044	2618	2995
2007	1.187	5047	2426	3416
2008	1.226	4663	2530	2513
2009	1.346	3966	2069	3100
2010	1.162	4277	2320	1408
2011	1.025	4028	3111	3187
2012	1.223	3626	3867	3512
2013	1.249	4598	2785	3820
2014	0.943	4945	1969	4560
2015	1.018	3743	1852	5771
2016	1.043	3526	1960	6963
2017	1.025	3311	1663	6399
2018	1.038	4014	1661	4555
2019	0.881	3529**		
2020	1.193	3138**		

\* Red gurnards are known to constitute a portion of the mixed gurnard landings. It is also likely that they are present in the landings reported as "GUU", which is the species code for tub gurnard, but which appears to be misinterpreted as unidentified gurnards by some data providers.

\*\* Preliminary.

## Sources and references

ICES. 2012. ICES Implementation of Advice for Data-limited Stocks in 2012 in its 2012 Advice. ICES CM 2012/ACOM:68. 42 pp. <https://doi.org/10.17895/ices.pub.5322>.

ICES. 2021a. Advice on fishing opportunities. In Report of the ICES Advisory Committee, 2021. ICES Advice 2021, section 1.1.1. <https://doi.org/10.17895/ices.advice.7720>.

ICES. 2021b. Working Group on Widely Distributed Stocks (WGWIDE). ICES Scientific Reports. 3:95. 874 pp. <http://doi.org/10.17895/ices.pub.8298>.

ICES. 2021c. Benchmark Workshop on selected stocks in the Western Waters in 2021 (WKWEST). ICES Scientific Reports, 3:31. 504 pp. <https://doi.org/10.17895/ices.pub.8137>.

[Download the stock assessment data and figures.](#)

*Recommended citation:* ICES. 2021. Red gurnard (*Chelidonichthys cuculus*) in subareas 3-8 (Northeast Atlantic). In Report of the ICES Advisory Committee, 2021. ICES Advice 2021, gur.27.3-8, <https://doi.org/10.17895/ices.advice.7757>.