

Dab (*Limanda limanda*) in subdivisions 22–32 (Baltic Sea)

ICES stock advice

ICES has not been requested to provide advice on fishing opportunities for this stock for 2021, 2022, or 2023.

Note: This advice is abbreviated due to the Covid-19 disruption. The previous advice issued in 2017 is attached as Annex 1.

Stock development over time

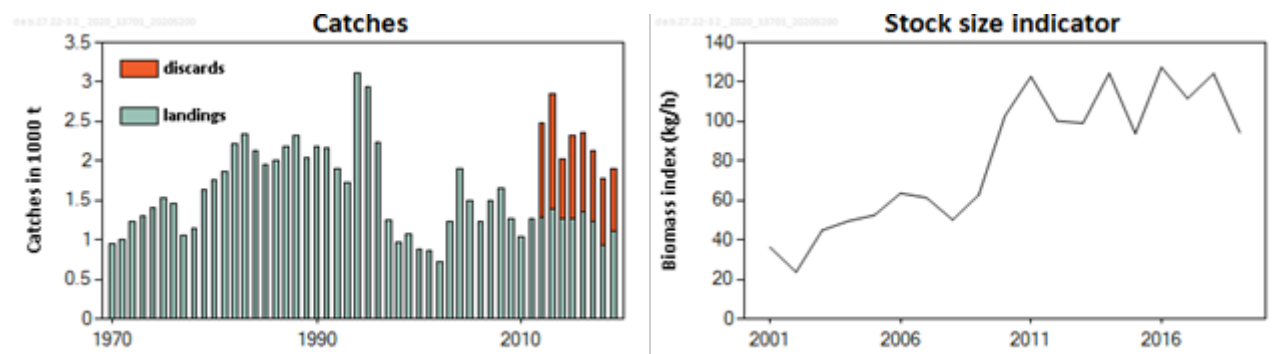


Figure 1 Dab in subdivisions 22–32. Left: ICES landings and ICES estimates of discards (in thousand tonnes). Discard data have only been included since 2012. Right: Combined biomass index (kg h^{-1}) of dab larger than 15 cm, from the Baltic International Trawl Survey (BITS – Q1 and Q4) in subdivisions 22, 23, and 24.

Stock and exploitation status

Table 1 Dab in subdivisions 22–32. State of the stock and the fishery relative to reference points. The status evaluation is based on reference point proxies (ICES, 2020).

| | | Fishing pressure | | | Stock size | | | | |
|---------------------------|---------------------------------|------------------|------|-----------------------------------|---------------------------------|------|------|---|----------------|
| | | 2017 | 2018 | 2019 | 2017 | 2018 | 2019 | | |
| Maximum sustainable yield | F_{MSY} | ✓ | ✓ | ✓ Below proxy | B_{MSY} | ? | ? | ? | Unknown |
| Precautionary approach | $F_{\text{pa}}, F_{\text{lim}}$ | ✓ | ✓ | ✓ Below possible reference points | $B_{\text{pa}}, B_{\text{lim}}$ | ? | ? | ? | Unknown |
| Management plan | F_{MGT} | – | – | – Not applicable | B_{MGT} | – | – | – | Not applicable |
| Qualitative evaluation | – | – | – | – Not applicable* | – | ↘ | ↗ | ↘ | Decreasing |

* Version 2; text updated

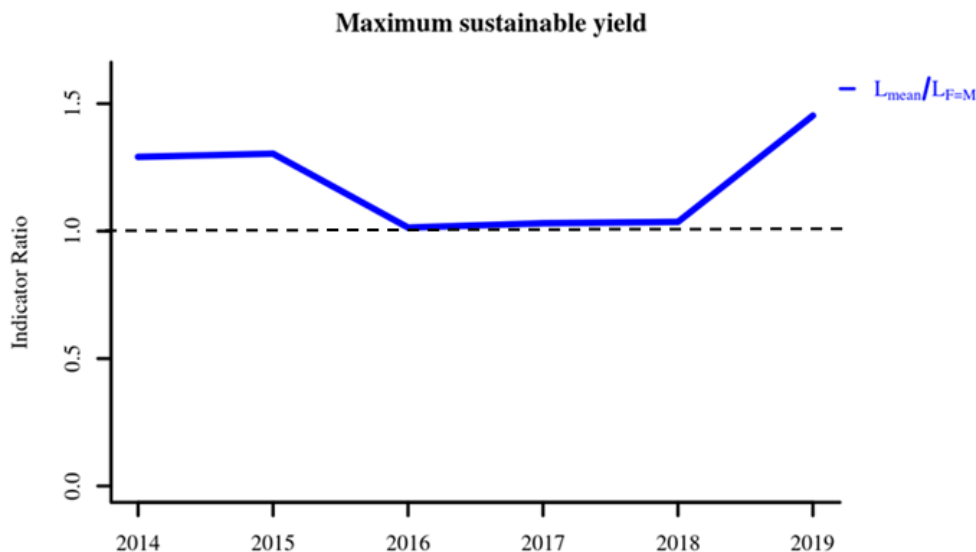


Figure 2 Dab in subdivisions 22–32. Index ratio $L_{\text{mean}}/L_{F=M}$ from the length-based indicator (LBI; ICES, 2020) method, used for the evaluation of the exploitation status. The exploitation status is below the F_{MSY} proxy when the index ratio value is higher than 1.

Catch scenarios

ICES has been requested to provide information on stock status; however, it has not been requested to provide advice on fishing opportunities for this stock.

History of the advice, catch, and management

Table 2 Dab in subdivisions 22–32. ICES advice and official landings. All weights are in thousand tonnes.

| Year | ICES advice | Landings corresponding to advice | Agreed TAC | Landings (ICES estimates) | Catches (ICES estimates) |
|------|--|----------------------------------|------------|---------------------------|--------------------------|
| 2000 | No advice | - | - | 876 | |
| 2001 | No advice | - | - | 861 | |
| 2002 | No advice | - | - | 715 | |
| 2003 | No advice | - | - | 1233 | |
| 2004 | No advice | - | - | 1894 | |
| 2005 | No advice | - | - | 1495 | |
| 2006 | No advice | - | - | 1228 | |
| 2007 | No advice | - | - | 1504 | |
| 2008 | No advice | - | - | 1648 | |
| 2009 | No advice | - | - | 1268 | |
| 2010 | No advice | - | - | 1041 | |
| 2011 | No advice | - | - | 1268 | |
| 2012 | Catches should not be increased | - | - | 1285 | 2476 |
| 2013 | No more than 20% catch increase | ≤ 1400 | - | 1384 | 2842 |
| 2014 | No more than 20% landings increase | ≤ 1400 | - | 1267 | 2026 |
| 2015 | Increased landings by no more than 3% | ≤ 1428 | - | 1268 | 2323 |
| 2016 | Precautionary approach (≤ 12% increase in catch) | ≤ 2980* | - | 1356 | 2363 |
| 2017 | Precautionary approach (≤ 3% increase in catch) | ≤ 3069* | - | 1227 | 2167 |
| 2018 | Precautionary approach (≥ 10% decrease in catch) | ≤ 2762* | - | 941 | 1781 |
| 2019 | No advice requested | | - | 1102 | 1903 |

| Year | ICES advice | Landings corresponding to advice | Agreed TAC | Landings (ICES estimates) | Catches (ICES estimates) |
|------|---------------------------|----------------------------------|------------|---------------------------|--------------------------|
| 2020 | No advice requested | - | | | |
| 2021 | No catch advice requested | - | - | | |
| 2022 | No catch advice requested | - | - | | |
| 2023 | No catch advice requested | - | - | | |

* Catch advice.

Summary of the assessment

Table 3 Dab in subdivisions 22–32. Assessment summary. The stock-size indicator is a combined biomass index of dab larger than 15 cm, from the Baltic International Trawl Survey (BITS–Q1 and Q4) in subdivisions 22, 23, and 24. The individual indices are weighted averages per depth stratum area and the two indices are combined using the geometric mean.

| Year | Stock-size indicator kg hour ⁻¹ | Landings tonnes | Discards tonnes |
|------|---|--------------------|--------------------|
| 1970 | | 950 | |
| 1971 | | 1011 | |
| 1972 | | 1235 | |
| 1973 | | 1311 | |
| 1974 | | 1399 | |
| 1975 | | 1530 | |
| 1976 | | 1456 | |
| 1977 | | 1048 | |
| 1978 | | 1144 | |
| 1979 | | 1639 | |
| 1980 | | 1758 | |
| 1981 | | 1865 | |
| 1982 | | 2209 | |
| 1983 | | 2334 | |
| 1984 | | 2132 | |
| 1985 | | 1958 | |
| 1986 | | 2001 | |
| 1987 | | 2184 | |
| 1988 | | 2320 | |
| 1989 | | 2039 | |
| 1990 | | 2175 | |
| 1991 | | 2172 | |
| 1992 | | 1908 | |
| 1993 | | 1727 | |
| 1994 | | 3106 | |
| 1995 | | 2943 | |
| 1996 | | 2229 | |
| 1997 | | 1248 | |
| 1998 | | 960 | |
| 1999 | | 1071 | |
| 2000 | | 876 | |
| 2001 | 36.3 | 861 | |
| 2002 | 23.7 | 715 | |
| 2003 | 44.9 | 1233 | |
| 2004 | 49.6 | 1894 | |
| 2005 | 52.6 | 1495 | |
| 2006 | 63.7 | 1228 | |
| 2007 | 61.4 | 1504 | |
| 2008 | 50.2 | 1648 | |
| 2009 | 62.8 | 1268 | |
| 2010 | 102.8 | 1041 | |

| Year | Stock-size indicator kg hour ⁻¹ | Landings tonnes | Discards tonnes |
|------|---|--------------------|--------------------|
| 2011 | 122.7 | 1268 | |
| 2012 | 100.3 | 1285 | 1191 |
| 2013 | 99.2 | 1384 | 1458 |
| 2014 | 124.4 | 1269 | 757 |
| 2015 | 93.9 | 1268 | 1055 |
| 2016 | 127.5 | 1356 | 1007 |
| 2017 | 111.6 | 1227 | 905 |
| 2018 | 124.3 | 941 | 840 |
| 2019 | 94.4 | 1102 | 801 |

Sources and references

ICES. 2020. Baltic Fisheries Assessment Working Group (WGBFAS). ICES Scientific Reports. 2:45.
<http://doi.org/10.17895/ices.pub.6024>

Recommended citation: ICES. 2020. Dab (*Limanda limanda*) in subdivisions 22–32 (Baltic Sea). In Report of the ICES Advisory Committee, 2020. ICES Advice 2020, dab.27.22-32.<https://doi.org/10.17895/ices.advice.5776>.