

Black-mouthed dogfish (*Galeus melastomus*) in subareas 6 and 7 (West of Scotland, southern Celtic Seas, and English Channel)

ICES advice on fishing opportunities

ICES has not been requested to provide advice on fishing opportunities for this stock.

Stock development over time

The stock size indicator has increased since 2001.

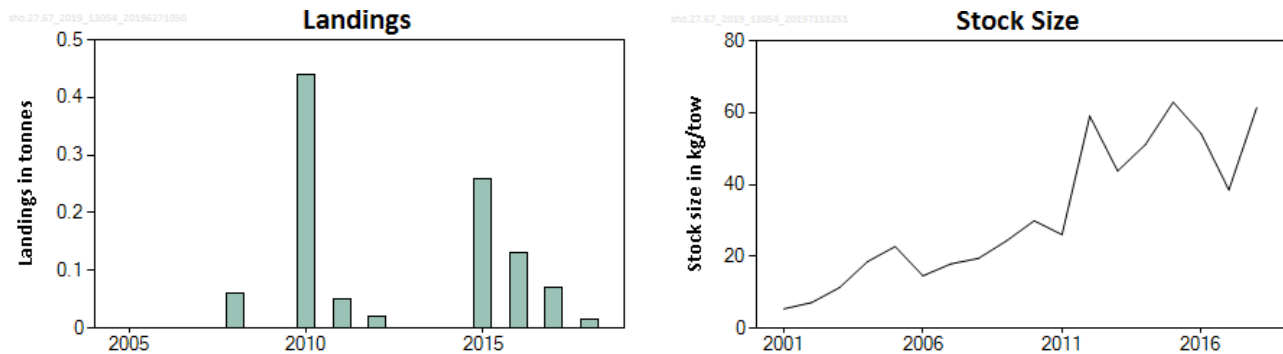


Figure 1 Black-mouthed dogfish in subareas 6 and 7. Summary of the stock assessment. Left: ICES estimated landings (in tonnes). Right: Stock size indicator from the Spanish SpPGFS-WIBTS-Q4 survey (kg tow⁻¹).

Stock and exploitation status

ICES cannot assess the stock and exploitation status relative to maximum sustainable yield (MSY) and precautionary approach (PA) reference points because the reference points are undefined.

Table 1 Black-mouthed dogfish in subareas 6 and 7. State of the stock and fishery relative to reference points.

| | | Fishing pressure | | | Stock size | | | | | |
|---------------------------|-------------------|------------------|------|------|----------------|-------------------|------|---|---|----------------|
| | | 2016 | 2017 | 2018 | 2016 | 2017 | 2018 | | | |
| Maximum sustainable yield | F_{MSY} | ? | ? | ? | Unknown | $MSY B_{trigger}$ | ? | ? | ? | Unknown |
| Precautionary approach | F_{pa}, F_{lim} | ? | ? | ? | Unknown | B_{pa}, B_{lim} | ? | ? | ? | Unknown |
| Management plan | F_{MGT} | — | — | — | Not applicable | B_{MGT} | — | — | — | Not applicable |
| Qualitative evaluation | - | ? | ? | ? | Unknown | - | ↘ | ↘ | ↗ | Increasing |

Catch scenarios

ICES has not been requested to provide advice on fishing opportunities for this stock.

Basis of the advice

ICES has not been requested to provide advice on fishing opportunities for this stock.

Table 2 Black-mouthed dogfish in subareas 6 and 7. The basis of the advice.

| | |
|-----------------|-------------------------------------------------------------------------------------------------------|
| Advice basis | No advice requested. |
| Management plan | ICES is not aware of any agreed precautionary management plan for black-mouthed dogfish in this area. |

Quality of the assessment

The status of the stock was evaluated from the Spanish SpPGFS-WIBTS-Q4 survey on the Porcupine Bank, which covers a small but commercially important part of the stock area.

Issues relevant for the advice

This stock is classified as Category 2 in the [NEAFC categorization of deep-sea species/stocks](#) which implies that NEAFC requires measures stipulating that directed fisheries are not authorised and that bycatches should be minimised.

Scyliorhinids are considered to be productive species in comparison to other demersal elasmobranchs.

Catch data are unreliable for this species. Some of the landings are included in the generic dogfish category. Discarding occurs, is variable between fishing fleets, and has not been fully quantified. Discard survival has not been estimated.

Reference points

No reference points are defined for this stock.

Basis of the assessment

Table 3 Black-mouthed dogfish in subareas 6 and 7. Basis of the assessment and advice.

| | |
|--------------------------|----------------------------------------------|
| ICES stock data category | 3 (ICES, 2018). |
| Assessment type | Survey trends-based assessment (ICES, 2019). |
| Input data | Survey: SpPGFS-WIBTS-Q4. |
| Discards and bycatch | Unknown. |
| Indicators | None. |
| Other information | None. |
| Working group | Working Group on Elasmobranch Fishes (WGEF) |

Information from stakeholders

There is no additional available information.

History of the advice, catch, and management

Table 4 Black-mouthed dogfish in subareas 6 and 7. History of ICES advice, the agreed TAC and estimates of landings. All weights are in tonnes.

| Year | ICES advice | Landings corresp. to advice | Agreed TAC | ICES landings* |
|------|-------------|-----------------------------|-------------------|----------------|
| 2002 | No advice | - | No TAC | |
| 2003 | No advice | - | No TAC | |
| 2004 | No advice | - | No TAC | |
| 2005 | No advice | - | No TAC** | 0.1 |
| 2006 | No advice | - | No TAC** | 2.9 |
| 2007 | No advice | - | No TAC** | 0.35 |
| 2008 | No advice | - | No TAC** | 0.06 |
| 2009 | No advice | - | No TAC** | 0 |
| 2010 | No advice | - | No TAC*** | 0.44 |
| 2011 | No advice | - | No TAC*** | 0.05 |
| 2012 | No advice | - | Zero TAC^ | 0.02 |
| 2013 | No advice | - | Zero TAC/No TAC^^ | 0 |
| 2014 | No advice | - | No TAC | 0 |
| 2015 | No advice | - | No TAC | 0.26 |

| Year | ICES advice | Landings corresp. to advice | Agreed TAC | ICES landings* |
|------|-----------------------------------------------------|---------------------------------------------------------------------------------------------|------------|----------------|
| 2016 | Precautionary approach | Increase by no more than 20% compared to the average catches in 2012–2014 | No TAC | 0.13 |
| 2017 | Biennial advice | Same catch value as advised for 2016 | No TAC | 0.07 |
| 2018 | Precautionary approach | Catches could be increased by no more than 20% compared to the average catches in 2014–2016 | No TAC | 0.02 |
| 2019 | Precautionary approach (Same advice as for 2018) | Catches could be increased by no more than 20% compared to the average catches in 2014–2016 | No TAC | |
| 2020 | No catch advice requested | - | | |
| 2021 | No catch advice requested | - | | |

* Data revised in 2016 (ICES, 2016). These are minimum estimates based on reported landings, and do not include landings of black-mouthed dogfish reported in generic categories.

** *Galeus melastomus* was included in the TAC for “deep-sea sharks” in the EU and international waters of ICES subareas 6–9.

*** *Galeus melastomus* was included in the bycatch TAC for “deep-sea sharks” in the EU and international waters of ICES subareas 6–9.

^ The TAC for “deep-sea sharks” was zero.

^^ *Galeus melastomus* was removed from the EU list of “deep-sea sharks” in an in-year amendment (EU, 2013).

History of the catch and landings

The distribution of this stock extends into the NEAFC Regulatory Area, estimates of landings are presented in Table 6 however, the proportional split of total catches cannot be determined.

Table 5 Black-mouthed dogfish in subareas 6 and 7. Catch distribution by fleet in 2018 as estimated by ICES.

| Catch (2018) | Landings | Discards |
|--------------|----------------|----------|
| Unknown | Longlines 100% | Unknown |
| | 0.02 tonnes | |

Table 6 Black-mouthed dogfish in subareas 6 and 7. History of ICES estimates of species-specific landings inside and outside of the NEAFC regulatory area. All weights are in tonnes.

| Year | Inside the NEAFC regulatory area | Outside the NEAFC regulatory area | Official catches |
|------|----------------------------------|-----------------------------------|------------------|
| 2014 | 0 | 0 | 0 |
| 2015 | 0 | 0.26 | 0.26 |
| 2016 | 0 | 0.13 | 0.13 |
| 2017 | 0 | 0.07 | 0.07 |
| 2018 | 0 | 0.02 | 0.02 |

Table 7 Black-mouthed dogfish in subareas 6 and 7. ICES estimates of landings by country. Weights in tonnes.

| Year | France | Spain | Total |
|------|--------|-------|-------|
| 2009 | 0 | | 0 |
| 2010 | 0.44 | | 0.44 |
| 2011 | 0.05 | | 0.05 |
| 2012 | 0.02 | | 0.02 |
| 2013 | 0 | | 0 |
| 2014 | | 0 | 0 |
| 2015 | 0.26 | | 0.26 |
| 2016 | 0.13 | | 0.13 |
| 2017 | 0.07 | | 0.07 |
| 2018 | 0 | 0.02 | 0.02 |

Summary of the assessment

Table 8 Black-mouthed dogfish in subareas 6 and 7. Assessment summary. Biomass index from the SpPGFS-WIBTS-Q4 trawl survey (in kg tow⁻¹).

| Year | kg tow ⁻¹ |
|------|----------------------|
| 2001 | 5.40 |
| 2002 | 7.16 |
| 2003 | 11.33 |
| 2004 | 18.52 |
| 2005 | 22.74 |
| 2006 | 14.59 |
| 2007 | 17.91 |
| 2008 | 19.46 |
| 2009 | 24.31 |
| 2010 | 29.91 |
| 2011 | 26.04 |
| 2012 | 59.03 |
| 2013 | 43.76 |
| 2014 | 51.09 |
| 2015 | 62.88 |
| 2016 | 54.14 |
| 2017 | 38.49 |
| 2018 | 61.35 |

Sources and references

EU. 2013. Council regulation (EU) No. 1182/2013 of 19 November 2013 amending Regulations (EC) No. 754/2009, (EU) No. 1262/2012, (EU) No. 39/2013 and (EU) No. 40/2013 as regards certain fishing opportunities. Official Journal of the European Union, L 313: 15–29. <http://data.europa.eu/eli/reg/2013/1182/oj>.

ICES. 2016. Report of the Workshop to compile and refine catch and landings of elasmobranchs (WKSHARK2), 19–22 January 2016, Lisbon, Portugal. ICES CM 2016/ACOM:40. 69 pp.

ICES. 2018. Advice basis. In Report of the ICES Advisory Committee, 2018. ICES Advice 2018, Book 1, Section 1.2. <https://doi.org/10.17895/ices.pub.4503>.

ICES. 2019. Working Group on Elasmobranch Fishes (WGEF). ICES Scientific Reports. 1:25. <http://doi.org/10.17895/ices.pub.5594>

Recommended citation: ICES. 2019. Black-mouth dogfish (*Galeus melastomus*) in subareas 6 and 7 (West of Scotland, southern Celtic Seas, and English Channel). In Report of the ICES Advisory Committee, 2019. ICES Advice 2019, sho.27.67, <https://doi.org/10.17895/ices.advice.4844>.