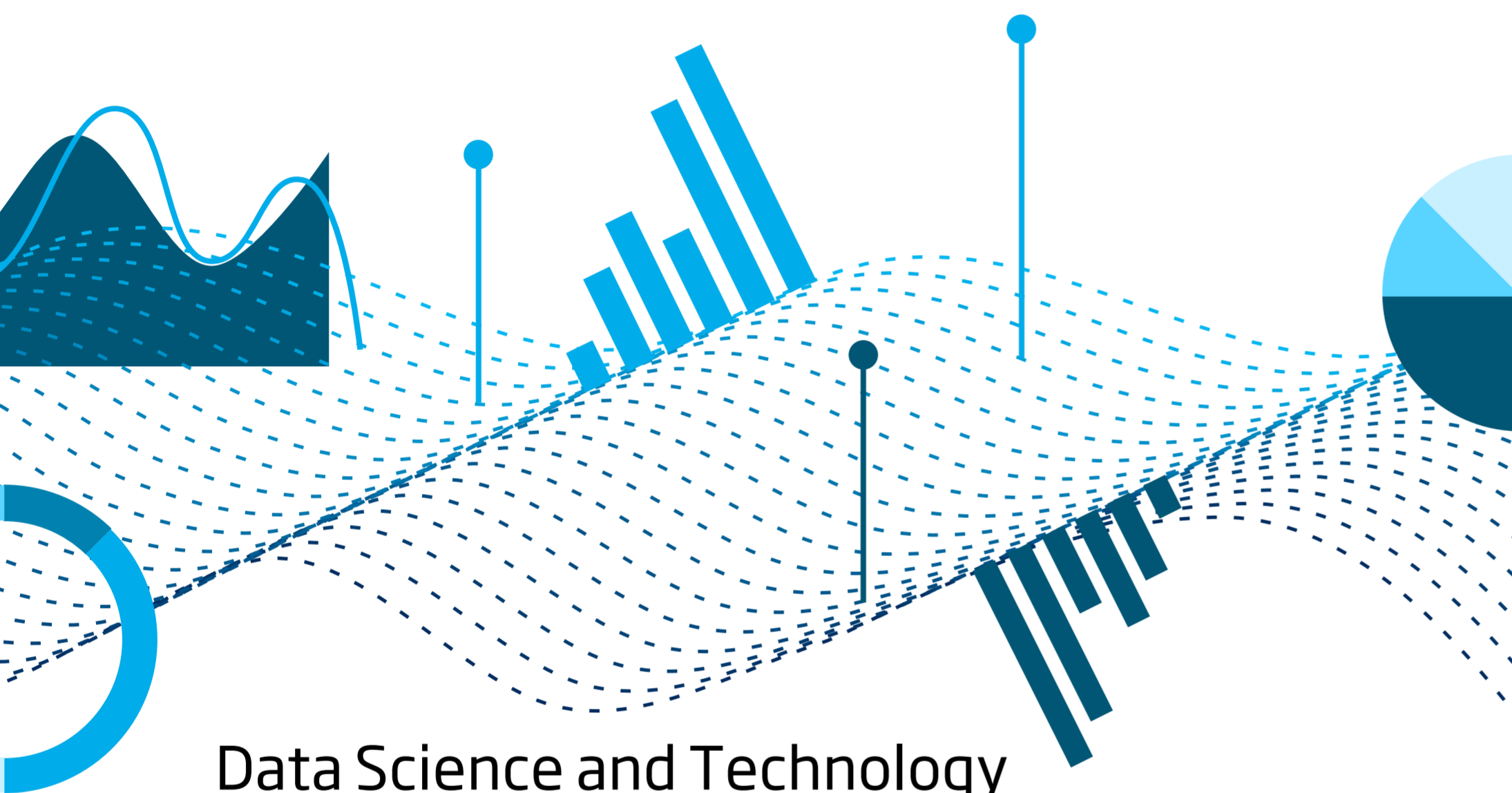


WGTIFD

Working Group on Technology Integration for Fishery-Dependent Data



Data Science and Technology
Steering Group (DSTSG)

RESEARCH FOCUS

- Agreeing and sharing best practice regarding the use of ETs as monitoring tools for specific types of fisheries and / or monitoring objectives.
- Promoting the uptake of electronic monitoring and increasing its management impact by standardising data formats, aligning to ICES data frameworks. Facilitating the integration of new data streams for science advice.
- Enhancing coordination between regulators and service providers to generate efficiencies through guidance on solicitations for products and services, and publishing recommendations for interoperability across providers.

OUR OBJECTIVE

This group brings together diverse professional backgrounds, expertise, and experience in the development and application of emerging electronic technologies (ETs) for monitoring, control, and surveillance (MCS) of fisheries. This includes defining ET vocabularies, inventorying global applications of ETs, and providing guidance on best practice for development and standardisation of ET monitoring programmes.

OUR EXPERTISE

- Fisheries MCS. Including the management, assessment and sustainable certification of stocks and fleets.
- Data collection via on-board observers and ETs, and the associated data management, analysis and video review.
- Design, development, installation and integration of ETs for the commercial fishing sector. Including AI, computer vision and full stack software development.

OUR CHAIRS



Brett Alger



Lisa Borges



Scan and learn more
about our work