

Blackspot seabream (*Pagellus bogaraveo*) in Subarea 9 (Atlantic Iberian waters)

ICES advice on fishing opportunities

ICES advises that when the precautionary approach is applied, catches should be no more than 119 tonnes in each of the years 2021 and 2022. All catches are assumed to be landed.

Note: This advice sheet is abbreviated due to the Covid-19 disruption. The previous advice issued for 2019 and 2020 is attached as Annex 1.

Stock development over time

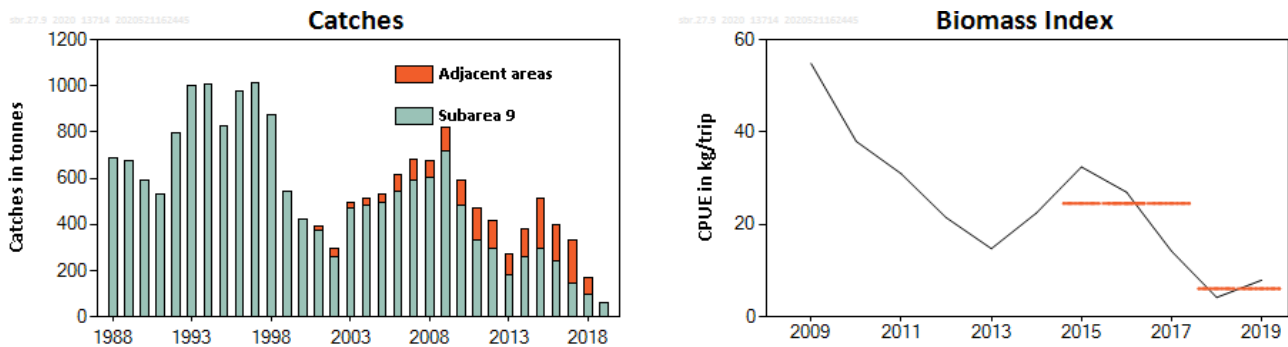


Figure 1 Blackspot seabream in Subarea 9. Left: Catches (in tonnes) include catches in ICES 27.9 (Subarea 9) as well as in other (adjacent) areas, for the Spanish and Moroccan fleets (FAO 34.1.11 and FAO 37.1.1). Moroccan data are not available in 2019. Right: Biomass index from standardized CPUE from Spanish “voracera” longline fleet VMS (information in kg per fishing trip from Strait of Gibraltar). The orange horizontal lines indicate the average biomass index of the respective year range (last two and preceding three years) used to calculate the advice.

Stock and exploitation status

Table 1 Blackspot seabream in Subarea 9. State of the stock and the fishery relative to reference points.

		Fishing pressure			Stock size					
		2017	2018	2019	2017	2018	2019			
Maximum sustainable yield	F_{MSY}	?	?	?	Unknown	$MSY B_{trigger}$?	?	?	Undefined
Precautionary approach	F_{pa}, F_{lim}	?	?	?	Unknown	B_{pa}, B_{lim}	?	?	?	Undefined
Management plan	F_{MGT}	—	—	—	Not applicable	B_{MGT}	—	—	—	Not applicable
Qualitative evaluation	-	?	?	?	Unknown	-	↘	↘	↗	Increasing

Catch scenarios

Table 2 Blackspot sea bream in Subarea 9. The basis for the catch scenarios.*

Index A (2018–2019)		6.08
Index B (2015–2017)		24.54
Index ratio (A/B)		0.25
Uncertainty cap	Applied	0.8
Advised catch for 2019–2020 issued in 2018		149 tonnes
Discarding rate		Negligible
Precautionary buffer	Not applied (last applied in 2018)	-
Catch advice **		119 tonnes
% advice change ^		-20%

*The figures in the table are rounded. Calculations were carried out with unrounded inputs and computed values may not match precisely when calculated using the rounded figures in the table.

** [Advised catch for 2019–2020] × [Uncertainty cap].

^ Advice value for 2021–2022 relative to the advice value for 2019–2020.

The advised catch has decreased by 20% due to the decreasing biomass index.

Issues relevant for the advice

This stock is classified as Category 4 in the NEAFC categorization of deep-sea species/stocks, which implies that fisheries are primarily restricted to coastal state exclusive economic zones (EEZs). Therefore, management measures are not taken by NEAFC unless complementary to coastal state conservation and management measures (NEAFC, 2016).

History of the advice, catch and management

Table 3 Blackspot sea bream in Subarea 9. ICES advice, management, and catches. Weights are in tonnes.

Year	ICES advice	Predicted catch corresp. to advice	TAC EU Subarea 9	ICES catches in Subarea 9 and adjacent areas
2003	*	-	1271	495
2004	*	-	1271	514
2005	*	-	1080	533
2006	*	-	1080	618
2007	*	-	1080	682
2008	*	-	1080	678
2009	Constrain catches to the average catches of 2003–2007	500	918	817
2010	Biennial	500	780	591
2011	Same advice as previously	500	780	469
2012	No new advice, same as 2011	500	780	417
2013	No increase in effort and catches reduced by 20% (average of 2009 to 2011)	500	780	273
2014	No new advice, same as 2013	500	780	380
2015	Reduce catches by 36%	115**	374	514
2016	No new advice, same as 2015	115**	183	401
2017	Precautionary approach, 20% increase from last catch advice	≤ 138**	174	335
2018	Precautionary approach (same value as advised catches for 2017)	≤ 138**	165	167
2019	Precautionary approach	≤ 149	149	60***
2020	Precautionary approach	≤ 149	149	
2021	Precautionary approach	≤ 119		
2022	Precautionary approach (same value as advised catches for 2021)	≤ 119		

* Prior to 2009, the advice was provided for the entire ICES area.

** Advice on EU catches.

*** 2019 Moroccan catches are not available.

Table 4 Blackspot seabream in Subarea 9. Catches inside and outside the NEAFC Regulatory Area (RA) as estimated by ICES. Weights are in tonnes.

Year	Inside the NEAFC RA	Outside the NEAFC RA	Total catches	Proportion of catches inside the NEAFC RA (%)
2015	0	514	514	0
2016	0	401	401	0
2017	0	335	335	0
2018	0	167	167	0
2019*	0	60	60	0

*2019 Moroccan catches are not available.

Summary of the assessment

Table 5 Blackspot seabream in Subarea 9. Assessment summary. Biomass index from “voracera” longline fleet VMS standardized CPUE (kg per fishing trip).

Year	Biomass index (kg per fishing trip)
2009	54.82
2010	37.98
2011	30.97
2012	21.48
2013	14.77
2014	22.49
2015	32.44
2016	26.99
2017	14.20
2018	4.21
2019	7.95

Sources and references

ICES. 2020. Report of the Working Group on the Biology and Assessment of Deep-sea Fisheries Resources (WGDEEP), ICES Scientific Reports, 2:38. <http://doi.org/10.17895/ices.pub.6015>.

NEAFC. 2016. The NEAFC approach to conservation and management of deep-sea species and categorization of deep-sea species/stocks. Adopted at the 35th Annual Meeting, November 2016. <https://www.neafc.org/basictexts>.

Recommended citation: ICES. 2020. Blackspot seabream (*Pagellus bogaraveo*) in Subarea 9 (Atlantic Iberian waters). In Report of the ICES Advisory Committee, 2020. ICES Advice 2020, sbr.27.9. <https://doi.org/10.17895/ices.advice.5806>.