

ECOREGION **Baltic Sea**
STOCK **Turbot in Subdivisions 22–32 (Baltic Sea)**

Advice for 2015

New data (landings and survey) available for this stock do not change the perception of the stock. Therefore, the advice for this fishery in 2015 is the same as the advice for 2013 and 2014 (see ICES, [2012](#), [2013](#)): "*Based on the ICES approach for data-limited stocks, ICES advises that catches should be less than 220 tonnes*".

Quality considerations

Catch data, including discards, need to be improved to get a better understanding of the state of turbot in the Baltic Sea. Biological data would be required to distinguish stock components.

The advice is based on a combined abundance index from two surveys, used as an indicator of stock size. The uncertainty associated with the index values is not available, but the index is considered uncertain due to the low catch rate in the surveys.

The methods applied to derive quantitative advice for data-limited stocks are expected to evolve as they are further developed and validated. The harvest control rules are expected to stabilize stock size, but they may not be suitable if the stock size is low and/or overfished.

Scientific basis

Stock data category	3.2.0 (ICES, 2014a)
Assessment type	Survey trends.
Input data	Commercial landings and survey data from Baltic International Trawl Survey (BITS Q1 + Q4).
Discards and bycatch	Discards are known to take place but cannot be quantified.
Indicators	None.
Other information	None.
Working group	Baltic Fisheries Assessment Working Group (WGBFAS)

Sources

- ICES. 2012. Turbot in Subdivisions 22–32 (Baltic Sea). *In* Report of the ICES Advisory Committee, 2012. ICES Advice 2012, Book 8, Section 8.4.12.
- ICES. 2013. Brill in Subdivisions 22–32 (Baltic Sea). *In* Report of the ICES Advisory Committee, 2013. ICES Advice 2013, Book 8, Section 8.4.17.
- ICES. 2014a. Advice basis. *In* Report of the ICES Advisory Committee, 2014. ICES Advice 2014, Book 1, Section 1.2.
- ICES. 2014b. Report of the Baltic Fisheries Assessment Working Group (WGBFAS), 3–10 April 2014, ICES Headquarters, Copenhagen, Denmark. ICES CM 2014/ACOM:10.

Table 8.3.20.1

Turbot in Subdivisions 22–32 (Baltic Sea). ICES advice, management, and official landings.

Year	ICES Advice	Predicted catch corresp. to advice	Agreed TAC	Official landings
2000	No advice	-	-	0.53
2001	No advice	-	-	0.46
2002	No advice	-	-	0.59
2003	No advice	-	-	0.58
2004	No advice	-	-	0.52
2005	No advice	-	-	0.43
2006	No advice	-	-	0.30
2007	No advice	-	-	0.30
2008	No advice	-	-	0.36
2009	No advice	-	-	0.40
2010	No advice	-	-	0.30
2011	No advice	-	-	0.32
2012	Reduce catch	-	-	0.23
2013	Reduce catches by 17% (and an additional 20%)	< 0.22	-	0.31
2014	Same advice as in 2013	< 0.22	-	
2015	Same advice as last year	< 0.22	-	

Weights in thousand tonnes.

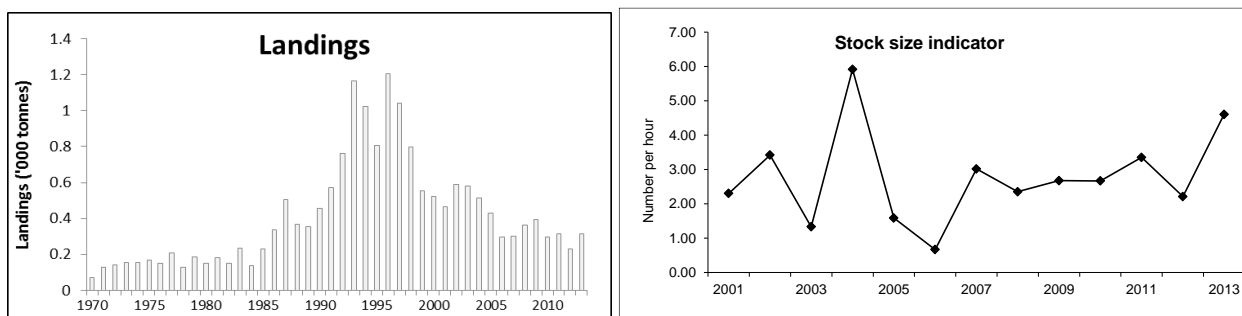


Figure 8.3.20.1

Turbot in Subdivisions 22–32 (Baltic Sea). ICES estimates of landings (in tonnes, left panel). Combined 1st and 4th quarters cpue (no. hr⁻¹; weighted average per depth stratum area) of fish equal to or larger than 20 cm, from the Baltic International Trawl Survey (BITS–Q1+Q4) in Subdivisions (SDs) 22–28 (data from ICES DATRAS database, right panel, recalculated in 2014).