

ECOREGION Widely distributed and migratory stocks
STOCK Roundnose grenadier (*Coryphaenoides rupestris*) in Division IIIa

Advice for 2015 and 2016

ICES advises on the basis of the precautionary considerations that there should be no directed fishery and bycatch should be minimized.

Stock status

Fishing pressure		
		2011–2013
MSY (F_{MSY})	?	Unknown
Precautionary approach (F_{pa}, F_{lim})	?	Unknown
Qualitative evaluation	?	Unknown
Stock size		
		2011–2013
MSY ($B_{trigger}$)	?	Unknown
Precautionary approach (B_{pa}, B_{lim})	?	Unknown
Qualitative evaluation	→	Stable at a low level

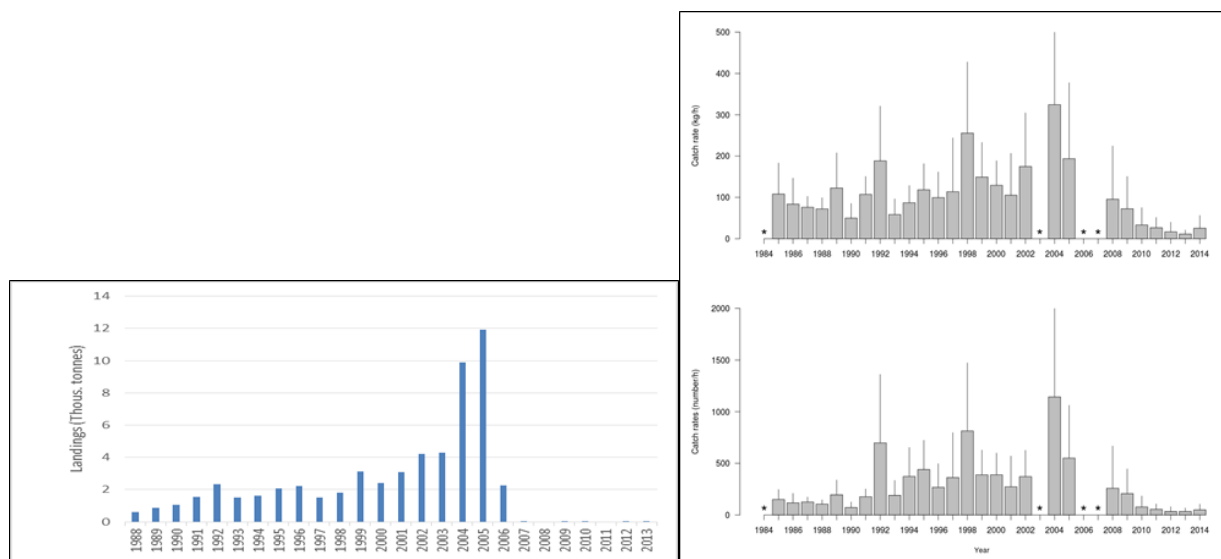


Figure 9.3.23.1.1 Roundnose grenadier in Division IIIa. Left panel: ICES landings (tonnes). Right panels: Survey catch rates in biomass (kg h^{-1}) and abundance (no. h^{-1}) of grenadier 1984–2014. Note: in 1984, 2003, 2006, and 2007 only a single or no trawl draws were made deeper than 400 m; thus, the primary grenadier habitat was not sampled. Lines indicate estimates of 2 SE.

Catches appear to have been stable at about 1000 tonnes in the 1990s. Large increases in catches in the early 2000s are considered to have been unsustainable on the basis of the biology of the species and the small geographical extent of the fishery (in one ICES rectangle alone). Landings after 2006 are zero due to zero TAC in the Norwegian sector. Catches in recent years are mostly bycatch in the Norwegian shrimp fishery.

The stock size indicator has been low since 2010.

Management plans

There are no specific management objectives for this assessment unit.

Biology

See Section 9.3.23 for details on biology.

The fisheries

A total of only 2–3 vessels actively participated in the fishery during the period of peak catches in 2002–2005. Since 2007 there has been no directed fishery, and at present this species is taken only as bycatch and only in small amounts (less than 500 t year⁻¹ in 2009–2011).

Catch distribution	Total catch (2013) was < 0.1 kt, where 0.001 kt were official landings and 0–0.1 kt were estimated bycatch in other fisheries. Discards are unknown.
---------------------------	--

Quality considerations

Some data are available from the Norwegian shrimp survey, but the survey coverage is variable and does not cover the entire depth range of the stock.

The advice is based on a precautionary low level of catches because of missing or non-representative data. The methods applied to derive quantitative advice for data-limited stocks are expected to evolve as they are further developed and investigated.

Scientific basis

Stock data category	6.3 (ICES, 2014a).
Assessment type	No assessment.
Input data	Catch data.
Discards and bycatch	Catch are bycatch landed for reduction purposes.
Indicators	None.
Other information	Trends from the Norwegian shrimp survey.
Working group	Working Group on the Biology and Assessment of Deep-Sea Fisheries Resources (WGDEEP).

ECOREGION **Widely distributed and migratory stocks**
STOCK **Roundnose grenadier (*Coryphaenoides rupestris*) in Division IIIa**

Reference points

No reference points have been defined for this assessment unit.

Outlook for 2015 and 2016

No reliable assessment can be presented for this assessment unit and fishing possibilities cannot be projected.

Precautionary considerations

ICES advises on the basis of the precautionary considerations that there should be no directed fishery and bycatch should be minimized.

Additional considerations*Advice considerations*

Landings appear to have been stable at about 1000 tonnes in the 1990s. Large increases in catches in the early 2000s were considered to be unsustainable on the basis of the biology of the species and the small geographical extent of the fishery (one ICES rectangle).

Comparison of the basis of previous assessment and advice

The basis for the assessment has not changed from 2012. The basis for the advice this year is the same as last year: the precautionary approach.

Sources

ICES. 2014a. Advice basis. *In* Report of the ICES Advisory Committee, 2014. ICES Advice 2014, Book 1, Section 1.2.
ICES. 2014b. Report of the Working Group on the Biology and Assessment of Deep-Sea Fisheries Resources (WGDEEP), 4–11 April 2014, ICES Headquarters, Copenhagen. ICES CM 2014/ACOM:17.

Table 9.3.23.1.1 Roundnose grenadier in Division IIIa. ICES advice, management, and landings.

Year	ICES Advice	Predicted catch corresp. to advice	TAC EU Subarea III	Norway TAC Subarea III	ICES landings Division IIIa
2003	Significant reduction in effort	-	1.870	no TAC	4.3
2004	Biennial	-		no TAC	9.9
2005	Fishery not allowed to expand, unless proven to be sustainable	-	1.590	no TAC	11.9
2006	Biennial	-	1.590	2.700	2.3
2007	50% reduction of effort compared to the level before the fishery expanded (1991–1999)	1	0.850	no TAC	0.001
2008	Biennial	1	0.850	no TAC	+
2009	Constrain catches to the catches level before the expansion of the fishery (1988–1991)	1	0.850	no TAC	0.002
2010	Biennial	1	0.850 ^a	no TAC	0.001
2011	Same advice as previously	1	0.850	no TAC	0
2012	No new advice, same as 2011		0.850	no TAC	
2013	Catch should not increase unless there is evidence that this will be sustainable	< 0.001			
2014	No new advice, same as 2013	< 0.001			
2015	No targeted fishery and minimize bycatch	0			
2016	No new advice, same as 2015	0			

Weights in thousand tonnes.

^a Bycatch only.

Table 9.3.23.1.2 Roundnose grenadier in Division IIIa. ICES estimates of landings.

YEAR	DENMARK	NORWAY	SWEDEN	TOTAL
1988	612		5	617
1989	884		1	885
1990	785	280	2	1067
1991	1214	304	10	1528
1992	1362	211	755	2328
1993	1455	55		1510
1994	1591		42	1633
1995	2080		1	2081
1996	2213			2213
1997	1356	124	42	1522
1998	1490	329		1819
1999	3113	13		3126
2000	2400	4		2404
2001	3067	35		3102
2002	4196	24		4220
2003	4302			4302
2004	9874	16		9890
2005	11 922			11 922
2006	2261	4		2265
2007	+	1		1
2008	+	+		+
2009	2	+	+	2
2010	1	+	+	1
2011		0		0
2012	1	0		10
2013*	1			1

* Preliminary data.