

**ICES**International Council for  
the Exploration of the Sea**CIEM**Conseil International pour  
l'Exploration de la Mer**8.4.17****Advice May 2013****ECOREGION****Baltic Sea****STOCK****Turbot in Subdivisions 22–32 (Baltic Sea)****Advice for 2014**

New data (surveys) available for this stock do not change the perception of the stock. Therefore, the advice for this fishery in 2014 is the same as the advice for 2013: "Based on the ICES approach for data-limited stocks, ICES advises that catches should be less than 220 tonnes".

**Quality considerations**

Catch data, including discards, need to be improved to get a better understanding of the state of turbot in the Baltic Sea. Biological data would be required to distinguish stock components.

**Scientific Basis**

<b>Assessment type</b>	Survey trends.
<b>Stock data category</b>	Category 3.2.0
<b>Input data</b>	Commercial landings and survey data from Baltic International Trawl Survey (BITS Q1 + Q4).
<b>Discards and bycatch</b>	Information is only available for 2012.
<b>Indicators</b>	None.
<b>Other information</b>	None.
<b>Expert Group report</b>	<a href="#">WGBFAS</a>

**Sources**

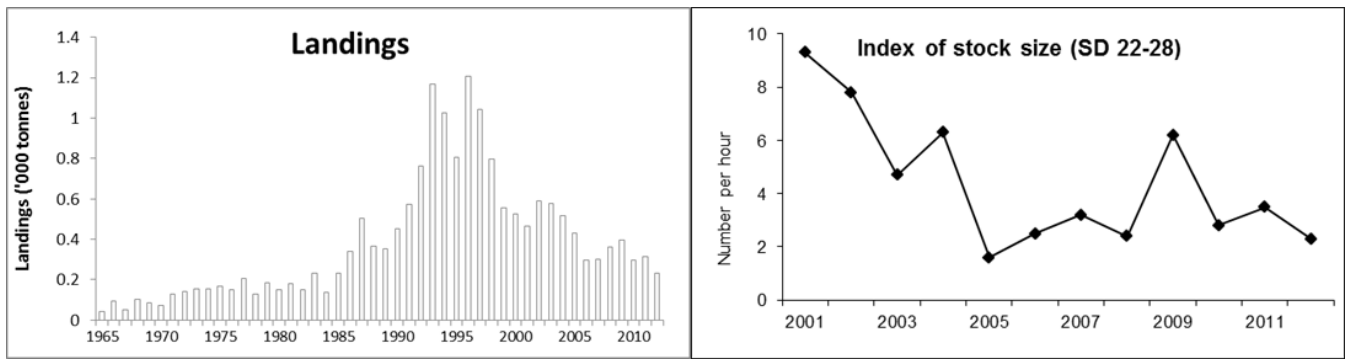
ICES. 2012. Turbot in Subdivisions 22–32 (Baltic Sea). *In* Report of the ICES Advisory Committee, 2012. ICES Advice, 2012. Book 8, Section 8.4.13.

ICES. 2013. Report of the Baltic Fisheries Assessment Working Group (WGBFAS), ICES Headquarters, 10–17 April 2013. ICES CM 2013/ACOM:10.

**Table 8.4.17.1** Turbot in Subdivisions 22–32 (Baltic Sea). ICES advice, management, and official landings.

Year	ICES Advice	Predicted catch corresp. to advice	Agreed TAC	Official landings
2000	No advice	-	-	0.53
2001	No advice	-	-	0.46
2002	No advice	-	-	0.59
2003	No advice	-	-	0.58
2004	No advice	-	-	0.52
2005	No advice	-	-	0.43
2006	No advice	-	-	0.30
2007	No advice	-	-	0.30
2008	No advice	-	-	0.36
2009	No advice	-	-	0.40
2010	No advice	-	-	0.30
2011	No advice	-	-	0.32
2012	Reduce catch	-	-	0.23
2013	Reduce catches by 17% (and an additional 20% )	< 0.22	-	-
2014	Same advice as 2013	< 0.22	-	-

Weights in thousand tonnes.



**Figure 8.4.17.1** Turbot in Subdivisions 22–32 (Baltic Sea). ICES estimates of landings (in thousand tonnes, left panel). Combined 1st and 4th quarters cpue (no. hr<sup>-1</sup>; weighted average per depth stratum area) of fish equal to or larger than 20 cm, from the Baltic International Trawl Survey (BITS–Q1+Q4) in Subdivisions (SD) 22–28 (revised data from ICES DATRAS database, right panel).