



The Baltic Sea Regional Project, BSRP

Jan Thulin, ICES

jan@ices.dk

www.ices.dk



Baltic Sea: Main Characteristics

- Semi-enclosed brackish water area
- Persistent vertical layers
- Residence time of water : 25yrs
- Renewal of bottom-water: unpredictable - often stagnation periods
- Plants/animals: low numbers - stressed
- Large catchment area with land use activities strong effect on water quality - population - 85 million



Major Threats to the Baltic Sea LME

1 Eutrophication

2 Overfishing

3 Toxic contaminants

4 Invasive species



International Managing Bodies



International **Baltic Sea**
Fishery **Commission**

Scientific Advice



International Council for
the Exploration of the Sea
Conseil International pour
l'Exploration de la Mer

ICESCIEM

350 scientists





5 eastern countries requested support from GEF

1995-1997

HELCOM - IBSFC – ICES 1998-2001

National consultations 1998-2001

LME Workshop 1998-2001

Draft PIP 2001

BSRP approved/launched 2003



BSRP = Baltic Sea Regional Project

- A project to be jointly implemented by HELCOM, ICES and IBSFC together with the 9 riparian Baltic countries, specifically the five eastern, supported by GEF/WB, and by Norway and USA.

Total budget 40 million US\$ 2003-2008

1st phase 2003-2005: Budget 12.1 mill US\$



BSRP Goals

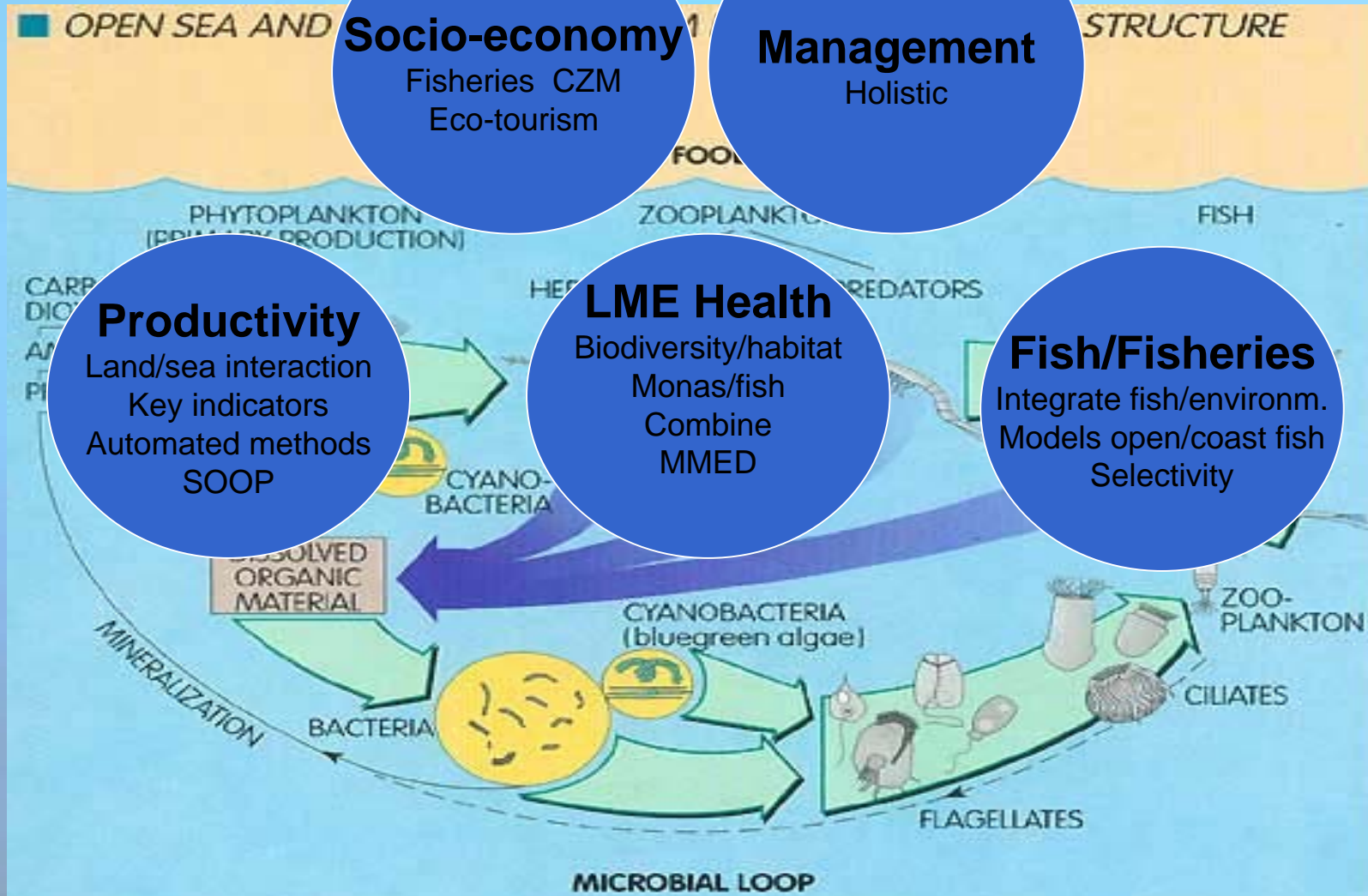
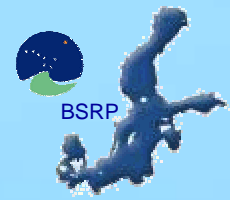
Develop and apply an ecosystem-based management strategy, a holistic view, to the BS LME !

Facilitate strengthening of regional institutions through capacity building

Inform and engage stakeholders and decision-makers

Assess and evaluate the socio-economic effects of the ecosystem-based management for the Baltic community

Baltic Sea LME concept



Productivity Module



Priority Issues

- Assessment of productivity levels in the adversely affected coastal and off-shore ecosystems of the BS
- Application of innovative technologies and buoy systems in environmental assessments
- Identifications of links between land-based nutrient inputs and long-term changes of both productivity and biodiversity in selected areas



Fish and Fisheries Module

Priority Issues

- Improvement of assessment and management scheme for sustainable exploitation for main commercial fish stocks in BS
- Improvement and implementation of assessment and management measures for sustainable exploitation of coastal fish resources
- Implementation of IBSFC Salmon Action Plan
- Evaluation of the impact of fisheries upon the ecosystems of the BS



Pollution and Ecosystem Health Module

Priority Issues

- Application of ecological quality criteria for the
BS LME
- Implementation of COMBINE
- Eutrophication and biological effects
- Chemical pollution and biological effects
- Invasive species and biodiversity
- Multiple Marine Ecological disturbances, MMED



The Baltic LME concept

Strengthening technical capacity

Land

Training farmers

Grant/Credit on-farm investments. Salmon river restor.

Modeling water quality and nutrient transport

Marine

Coastal

CZM

Fish/enviro. n. m.

Toxins/impact

COMBINE

parameters

Ships of Opportunity

Joint integrated ass. surveys

MMED

Ecosystem Health parameters

Strengthening technical capacity, WS.s

Upgrade laboratories and ships

Improve scientific and political coordination

Improvement

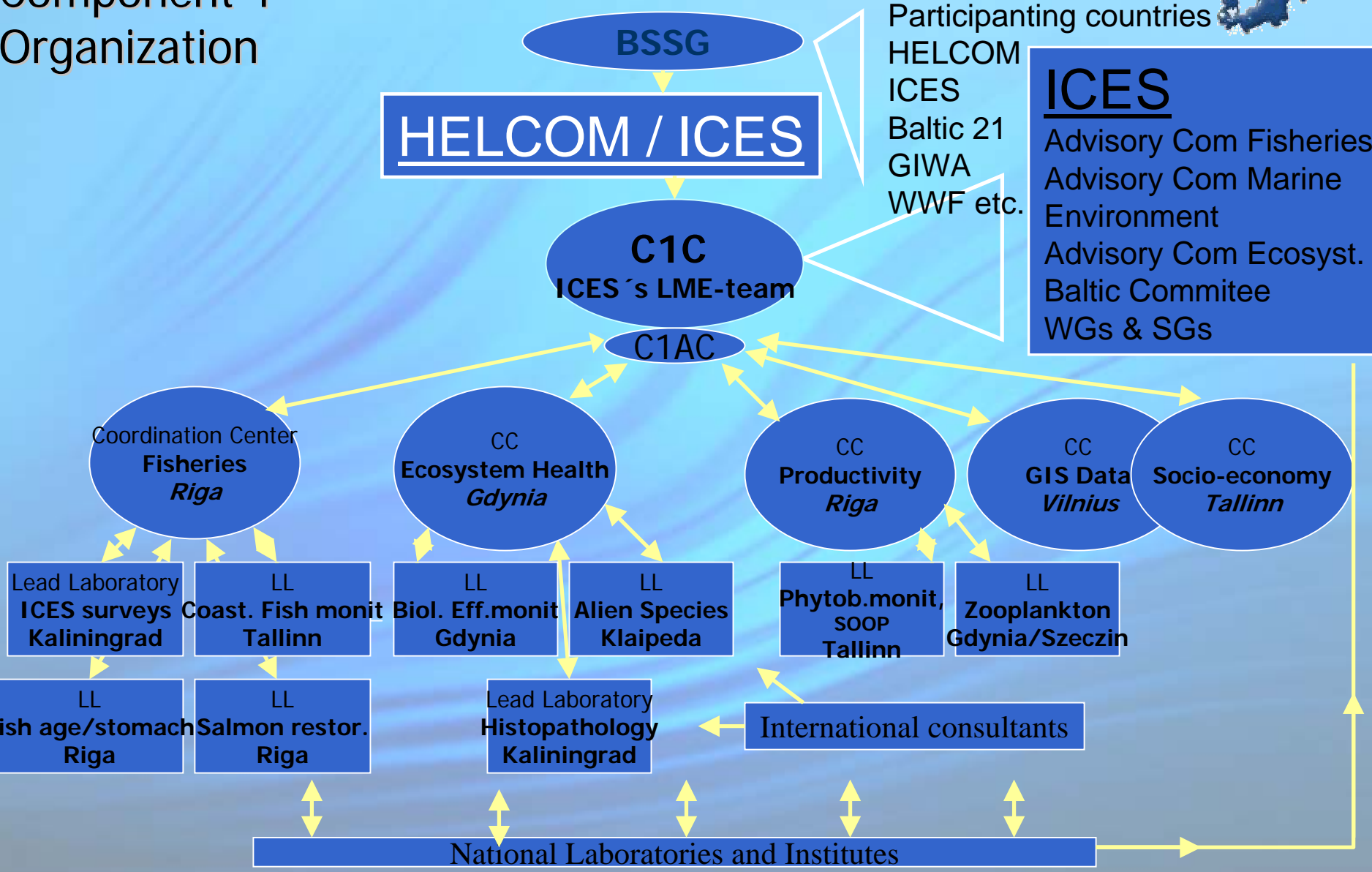
Ecosystem

Socio-economy

Management



Component 1 Organization





Lead Laboratories

Scope of Services

- To organize a kick-off coordination/technical workshop relative to their focus area;
- To organize and train staff as required for new equipment and techniques;
- To act as reference center within their specialty towards other BSRP laboratories and ICES;
- To coordinate compilations, data processing and assessments;
- To participate in appropriate regional fora and ICES working groups;
- To assist in the preparation for organized integrated evaluations and assessments and report results to ICES WG/Committees, HELCOM and other bodies;



Activities during October-December 2003

- Continue seeking funding from cooperating countries
- Finalizing negotiations with and contracting LPM.s for CC and LL
- Meeting of SG PROD in Riga, Latvia, 29-31 October
- Meeting of SG EH Gdynia, Poland 9-12 November
- LPM.s start working for the BSRP 1 December



All BSRP documents
is found on
www.ices.dk -
projects - BSRP