



The Baltic Sea Regional Project, BSRP

Jan Thulin, ICES

jan@ices.dk

www.ices.dk



Baltic Sea: Main Characteristics

- Semi-enclosed brackish water area
- Persistent vertical layers
- Residence time of water : 25yrs
- Renewal of bottom-water: unpredictable - often stagnation periods
- Plants/animals: low numbers - stressed
- Large catchment area with land use activities strong effect on water quality - population - 85 million



Major Threats to the Baltic Sea LME

1 Eutrophication

2 Overfishing

3 Toxic contaminants

4 Invasive species



International Managing Bodies



International **Baltic Sea**
Fishery **Commission**

Scientific Advice



International Council for
the Exploration of the Sea
Conseil International pour
l'Exploration de la Mer

ICESCIEM

350 scientists





5 eastern countries requested support from GEF

1995-1997

HELCOM - IBSFC – ICES 1998-2001

National consultations 1998-2001

LME Workshop 1998-2001

Draft PIP 2001

BSRP approved/launched 2003



BSRP = Baltic Sea Regional Project

- A project to be jointly implemented by HELCOM, ICES and IBSFC together with the 9 riparian Baltic countries, specifically the five eastern, supported by GEF/WB, and by Norway and USA.

Total budget 40 million US\$ 2003-2008

1st phase 2003-2005: Budget 12.1 mill US\$



BSRP Goals

Develop and apply an ecosystem-based management strategy, a holistic view, to the BS LME !

Facilitate strengthening of regional institutions through capacity building

Inform and engage stakeholders and decision-makers

Assess and evaluate the socio-economic effects of the ecosystem-based management for the Baltic community



- *Project components*

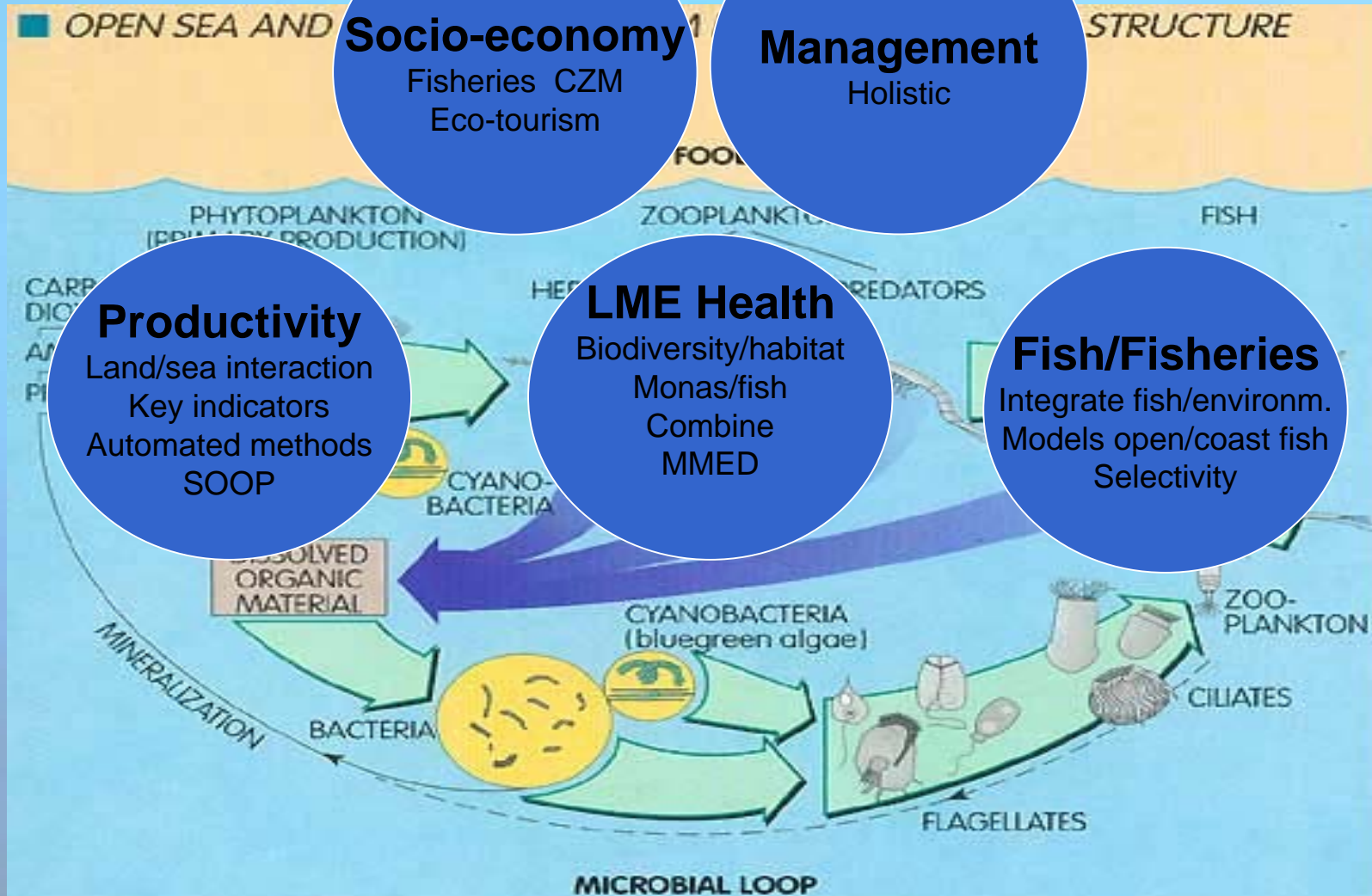
1 Large Marine Ecosystem Activities

**2 Land and Coastal Management
Activities**

**3 Institutional Strengthening and
Regional Capacity Building**

4 Project Management

Baltic Sea LME concept



Productivity Module



Priority Issues

- Assessment of productivity levels in the adversely affected coastal and off-shore ecosystems of the BS
- Application of innovative technologies and buoy systems in environmental assessments
- Identifications of links between land-based nutrient inputs and long-term changes of both productivity and biodiversity in selected areas



Fish and Fisheries Module

Priority Issues

- Improvement of assessment and management scheme for sustainable exploitation for main commercial fish stocks in BS
- Improvement and implementation of assessment and management measures for sustainable exploitation of coastal fish resources
- Implementation of IBSFC Salmon Action Plan
- Evaluation of the impact of fisheries upon the ecosystems of the BS



Pollution and Ecosystem Health Module

Priority Issues

- Application of ecological quality criteria for the
BS LME
- Implementation of COMBINE
- Eutrophication and biological effects
- Chemical pollution and biological effects
- Invasive species and biodiversity
- Multiple Marine Ecological disturbances, MMED



The Baltic LME concept

Strengthening technical capacity **Land**

Training farmers
Grant/Credit on-farm investments. Salmon river restor.
Modeling water quality and nutrient transport

Marine

Coastal

CZM
Fish/enviro. Toxins/impact
COMBINE

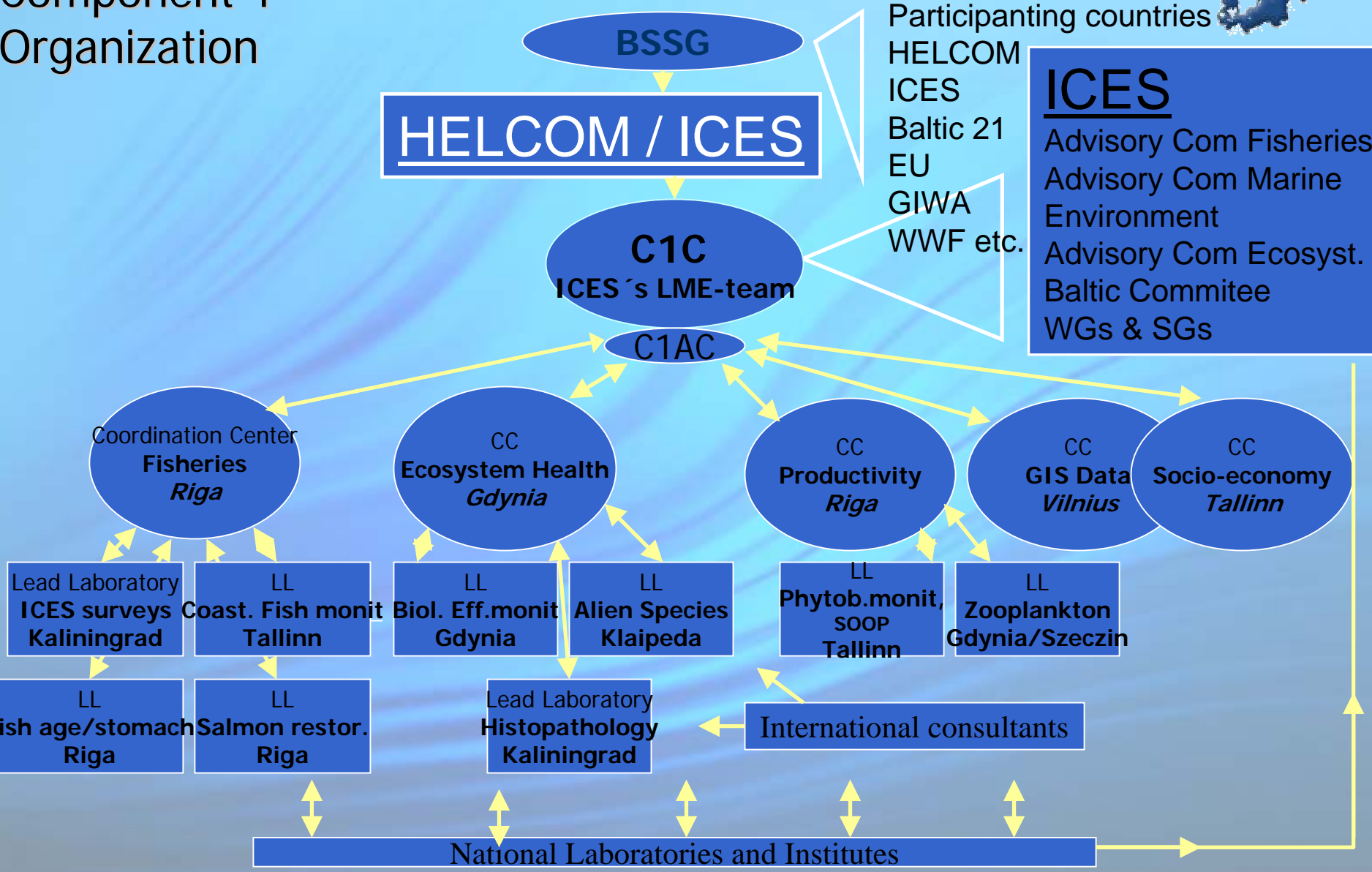
Ships of Opportunity
Joint integrated ass. surveys
MMED Ecosystem Health parameters
Strengthening technical capacity, WS.s
Upgrade laboratories and ships
Improve scientific and political coordination

Improvement

Ecosystem
Socio-economy
Management



Component 1 Organization



Participating countries

- HELCOM
- ICES
- Baltic 21
- EU
- GIWA
- WWF etc.

ICES
 Advisory Com Fisheries
 Advisory Com Marine Environment
 Advisory Com Ecosyst.
 Baltic Committee
 WGs & SGs

HELCOM / ICES

C1C
ICES's LME-team

C1AC

Coordination Center
Fisheries
Riga

CC
Ecosystem Health
Gdynia

CC
Productivity
Riga

CC
GIS Data
Vilnius

CC
Socio-economy
Tallinn

Lead Laboratory
ICES surveys
Kaliningrad

LL
Coast. Fish monit
Tallinn

LL
Biol. Eff.monit
Gdynia

LL
Alien Species
Klaipeda

LL
**Phytob.monit,
SOOP**
Tallinn

LL
Zooplankton
Gdynia/Szczecin

LL
Fish age/stomach
Riga

LL
Salmon restor.
Riga

Lead Laboratory
Histopathology
Kaliningrad

International consultants

National Laboratories and Institutes



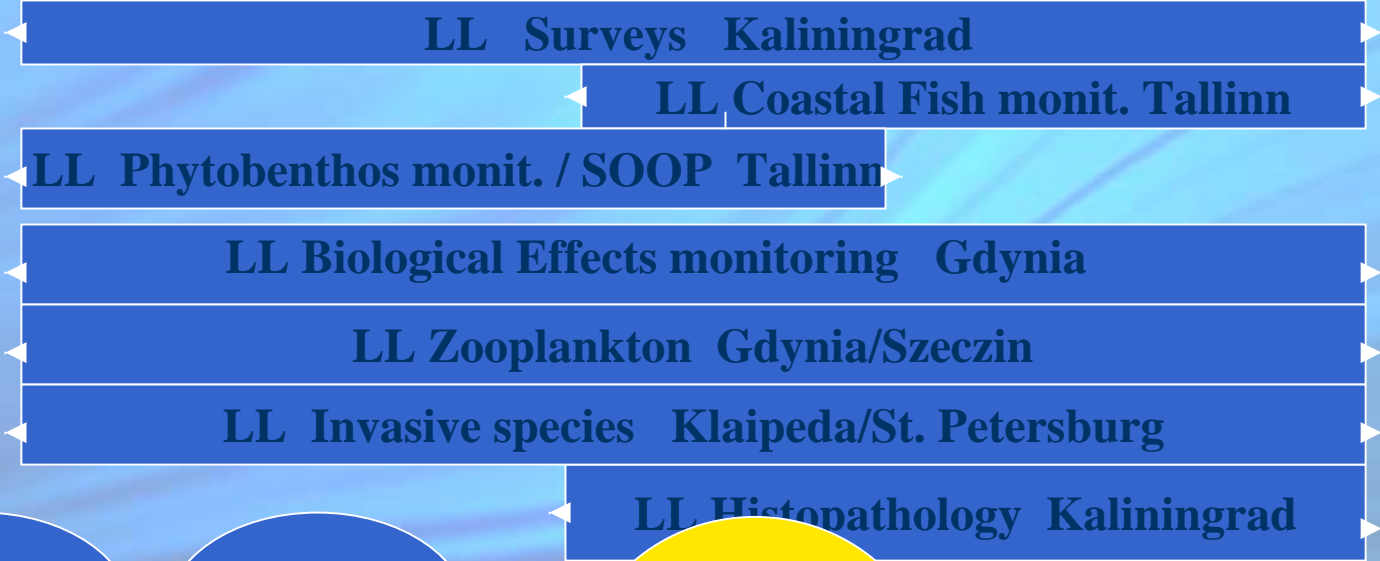
Lead Laboratories

Scope of Services

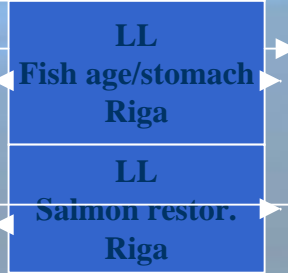
- To organize a kick-off coordination/technical workshop relative to their focus area;
- To organize and train staff as required for new equipment and techniques;
- To act as reference center within their specialty towards other BSRP laboratories and ICES;
- To coordinate compilations, data processing and assessments;
- To participate in appropriate regional fora and ICES working groups;
- To assist in the preparation for organized integrated evaluations and assessments and report results to ICES WG/Committees, HELCOM and other bodies;



ICES Baltic Committee



Cooperating Organisations a projects





All BSRP documents
is found on
www.ices.dk -
projects - BSRP