

GEF Baltic Sea Regional Project

Effective 30 May 2003

Budget: USD 12 million

ICES/LME Activities = USD 5.6 million

Period: 2003 - 2005

5 eastern countries requested support from GEF

1995-1997



HELCOM - IBSFC - ICES 1998-2001

National consultations 1998-2001

LME Workshop 1998-2001

Draft PIP 2001

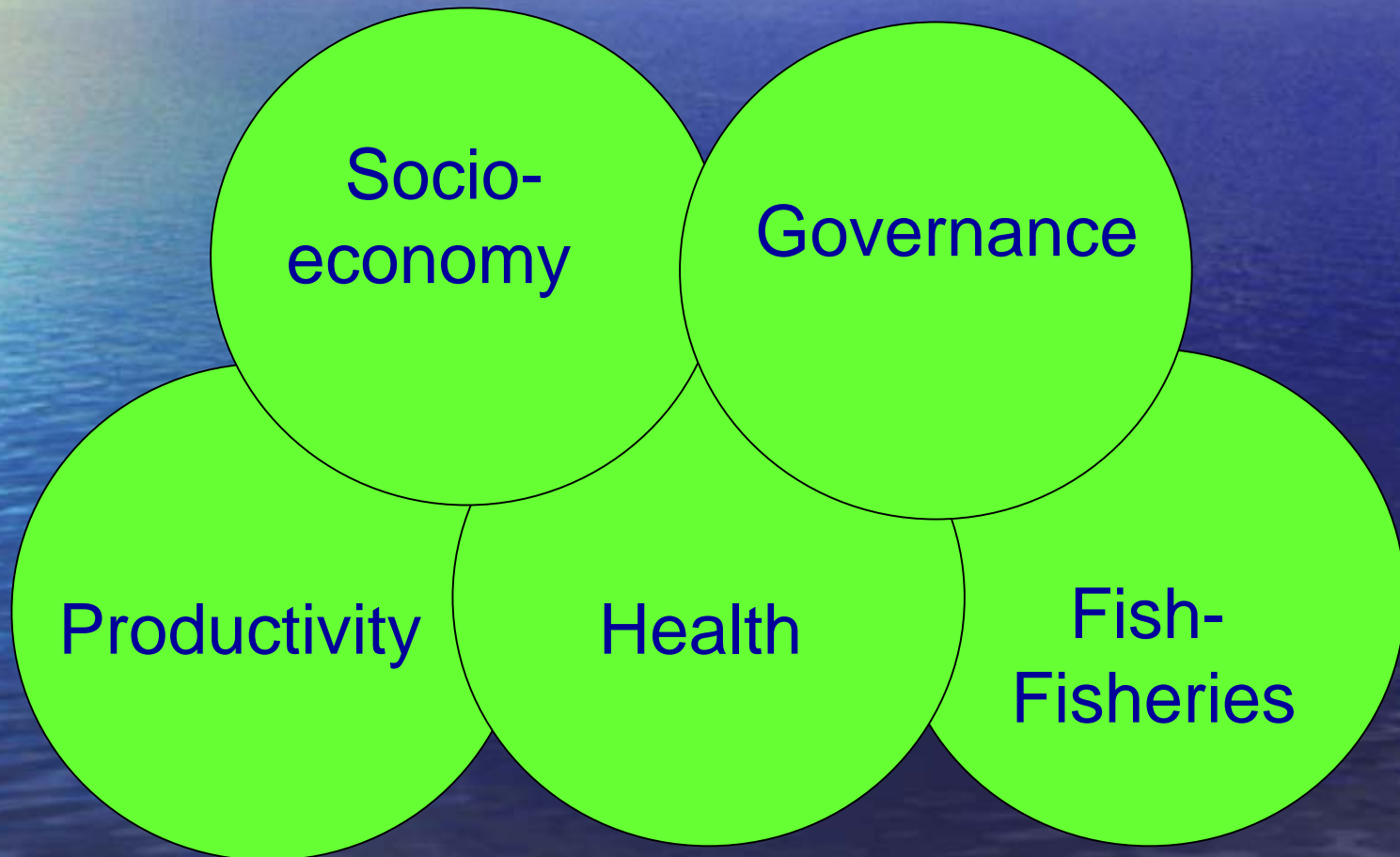
SG IBSRP 2003

BSRP approved/launched 2003

- A project to be jointly implemented by HELCOM, ICES and IBSFC together with the 9 riparian Baltic countries, specifically the five eastern, supported by GEF/WB, and by Norway and USA.

Total budget 40 million US\$ 2003-2008
1st phase 2003-2005: Budget 12.1 mill US\$

The Large Marine Ecosystem concept



- *Project components*

1 Large Marine Ecosystem Activities, ICES

**2 Land and Coastal Management
Activities, HELCOM**

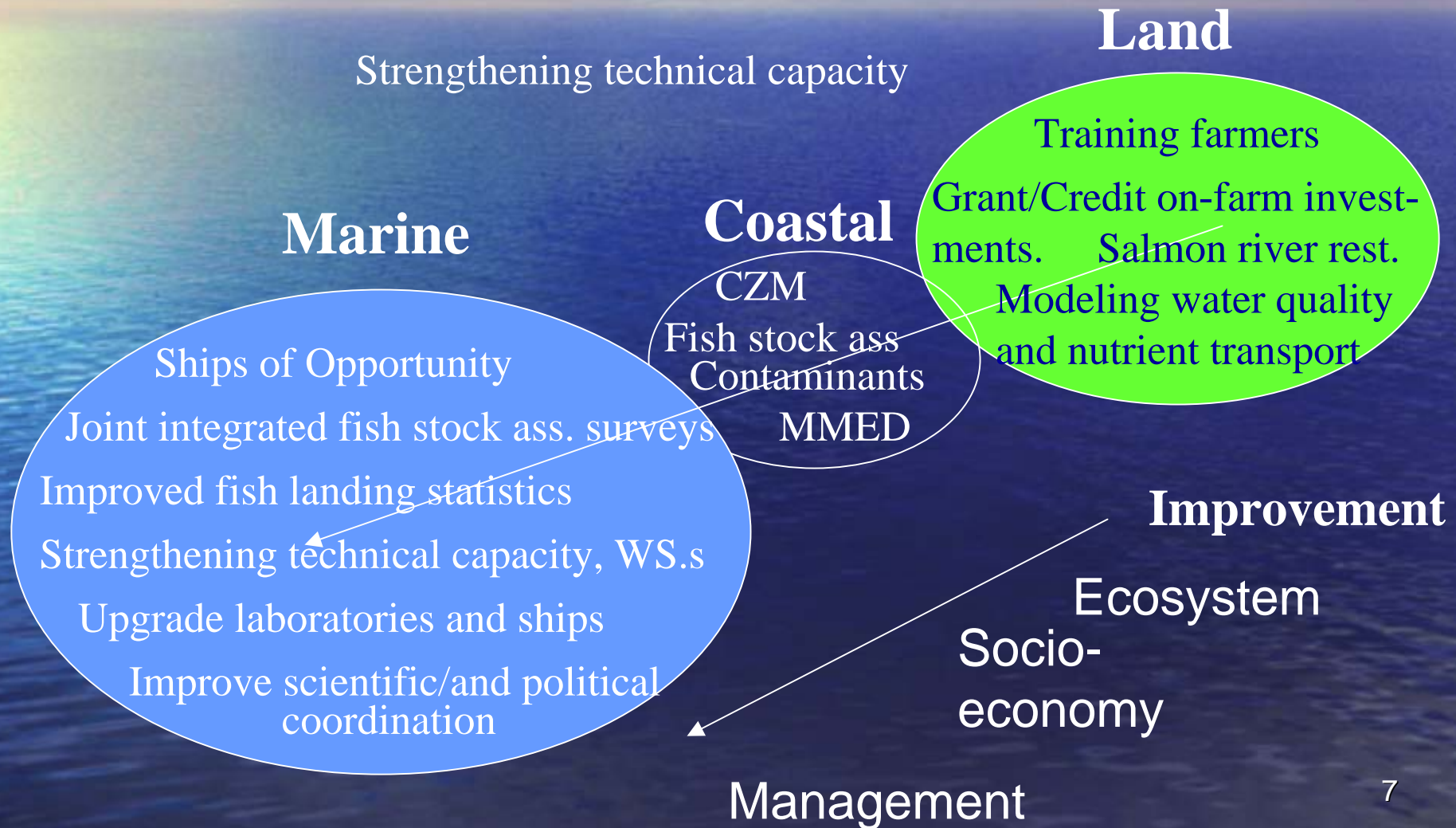
**3 Institutional Strengthening and Regional
Capacity Building, HELCOM, ICES**

4 Project Management

Goals

- * Develop and apply an ecosystem-based management strategy to the BSLME*
- * Facilitate strengthening of regional institutions through capacity building efforts**
- * Inform and engage stakeholders and decision-makers on the project approach and objectives**
- * Assess and evaluate the socio-economic effects of the ecosystem-based management for farming, fishing and coastal communities**

The Ecosystem approach = The Baltic LME concept



LME Activities



Fish and Fisheries Module

Priority Issues

- Improvement of assessment and management scheme for sustainable exploitation for main commercial fish stocks in BS
- Improvement and implementation of assessment and management measures for sustainable exploitation of coastal fish resources
- Implementation of IBSFC Salmon Action Plan
- Evaluation of the impact of fisheries upon the ecosystems of the BS

Result SG IBSRP

