



GEF Baltic Sea Regional Project, BSRP

Status and views on
management, implementation
and its future



International Managing Bodies



International **Baltic Sea**
Fishery **Commission**

BSRP

Scientific Advice



ICESCIEM

350 scientists



The Baltic LME concept

Strengthening technical capacity

Land

Coastal

Training farmers

Grant/Credit on-farm investments. Salmon river rest.

Modeling water quality and nutrient transport

Marine

CZM

Fish/envionm.
Toxins/impact
COMBINE

Ships of Opportunity

Joint integrated ass. surveys

Ecosystem Health parameters

Strengthening technical capacity, WS.s

Upgrade laboratories and ships

Improve scientific/and political coordination

C1

C2



2003-2008: Budget 40 M. US\$ (GEF 18 M. US\$)

Phase 1: 2003-2006: Introduction of the Ecosystem Approach

12 M. (5.5) US\$

Phase 2: 2006-2007: Demonstration of the Ecosystem Approach

21 M (10) US\$

Phase 3: Expanding Application of the Ecosystem Approach: 2007-2008

7 M (2.5) US\$

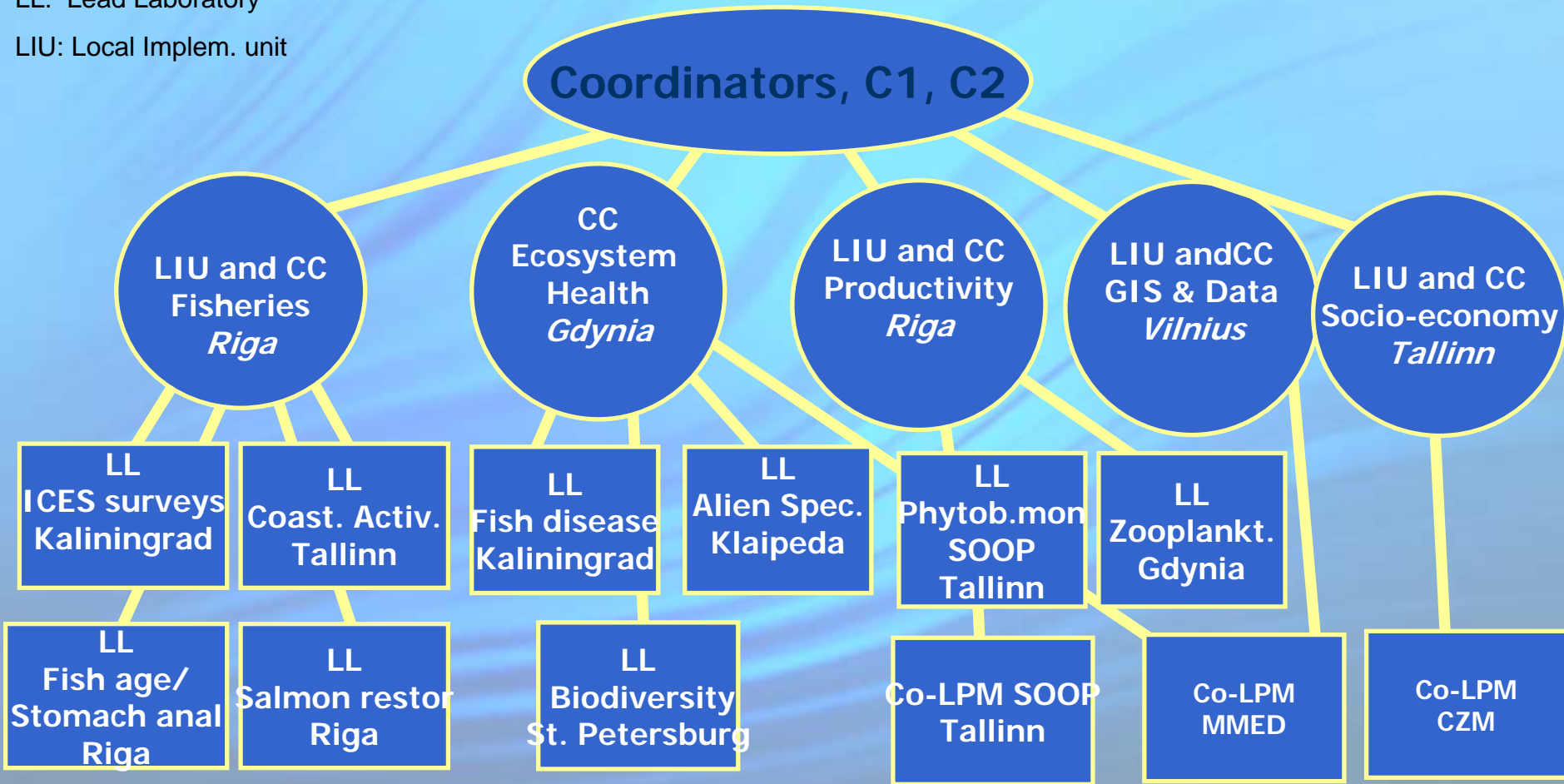


Working Structure

CC: Coordination Centre

LL: Lead Laboratory

LIU: Local Implem. unit



+

Institutes in Denmark, Finland, Germany, Sweden and USA



Phase 1

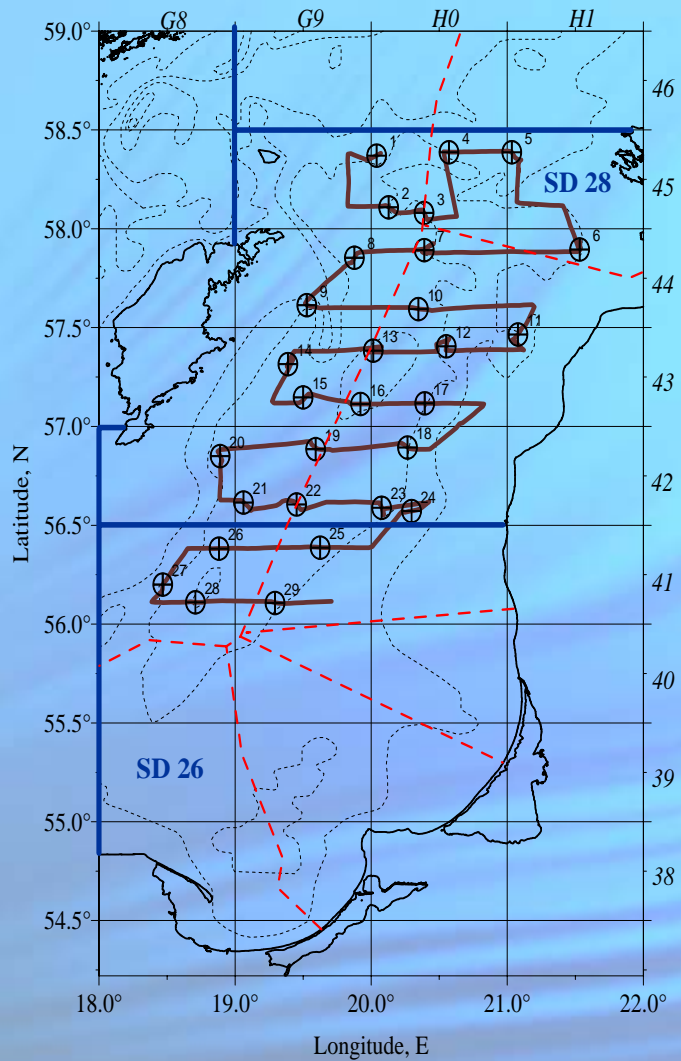
Major strength: Organization and net-work

| | |
|--------------------------------|-------------|
| Cooperating Institutes in kind | 3 M US\$/y |
| EU-project BONUS | 1M US\$/y |
| EU-project SAFMAMS | 0.2 US\$/y |
| (EU-project BONUS-169 | 70M US\$/y) |

Challenge :

Phase 2: 2006-2007: Demonstration of the
Ecosystem Approach

21 M (10) US\$



BSRP joint fisheries/productivity cruise, 14 - 24.05.05 R/V Baltica (Poland)

Figure 1. Cruise track design and hauls of Latvian-Polish hydroacoustic survey.
(r/v "Baltica", 14.-24.05.2005)



New reports

EcoQOs and Indicators
were proposed and
discussed for

Eutrophication

Contamination

Overfishing

Loss of Biodiversity

REPORT OF THE ICES/BSRP/HELCOM/UNEP REGIONAL SEAS WORKSHOP ON BALTIC SEA ECOSYSTEM HEALTH INDICATORS

30 MARCH–1 APRIL 2005

SOPOT, POLAND



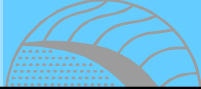
International Council for the Exploration of the Sea



International Council for the Exploration of the Sea

Conseil International pour l'Exploration de la Mer

Please read it and comment !!!



| Meeting name | Time | Venue |
|--|-----------------------|----------------------|
| IOC/BSRP Ocean Teachers Data training | October, 2005 | Vilnius |
| ICES/BSRP workshop on FishFrame and DATRAS | October, 2005 | Gdynia |
| Workshops on environmental genotoxicity and selected enzyme biomarkers in fish and mollusks | Autumn 2005 | Gdynia, PL |
| Final workshop on zooplankton indicators | November, 2005 | Gdynia |
| Sea-going training workshop on fish pathology | December, 2006 | R/W W.Herwig/Germany |
| Sprat & Flounder Age Reading workshops | January/February 2006 | Riga |
| BSRP/HELCOM/MTI/Ind Coastal Fish Monitoring workshop | January, 2006 | Helsinki |
| BSRP/HELCOM meeting on Alien Species Introductions in the Baltic Sea Area | January, 2006 | Helsinki |
| BSRP Introductory workshop on Acoustic data processing | Winter 2005/2006 | Kaliningrad |
| BSRP Training workshop on using Sonar-DataEcho_View | Spring 2006 | Kaliningrad |
| BSRP/HELCOM Zooplankton workshop | Spring, 2006 | Warnemuende, DE |
| Gear inter-comparison to quantify the accuracy of the gear used within the Zooplankton part of COMBINE | Summer, 2006 | Helsinki, FI |
| | | |

Activities autumn 2005

Finalizing procurements to labs and ships



Phase 2: 2006-2007: Demonstration of the Ecosystem Approach: 21 M (10) US\$

Evaluation of the BSRP activities up to now:

~~Baltic Sea Regional Project BSRP~~
~~Baltic Sea Large Marine Ecosystem, BSLME~~

- Reorganization of reportings/WG activities to/of ICES ?
- Amendments of the Project Implementation Plan, *PIP* !
- Amendments of the Project procurement Plan, *PPP* !



Thank you

