

Baltic Sea Regional Project progress

SOOP workshop, Oct 14-15 Helsinki

Bärbel Müller-Karulis, BSRP

Productivity Coordination Center

What is the Baltic Sea Regional Project?

- Global Environment Facility (GEF) funded
- Goal: Ecosystem based management of the Baltic Sea
- Marine and land-based component, institutional strengthening and capacity building
- Beneficiary countries – Eastern Baltic, scope entire Baltic Sea
- Grant to HELCOM, marine activities implemented by ICES

- *Project components*

1 Large Marine Ecosystem Activities

**2 Land and Coastal Management
Activities**

**3 Institutional Strengthening and
Regional Capacity Building**

4 Project Management

1. Large Marine Ecosystem Activities

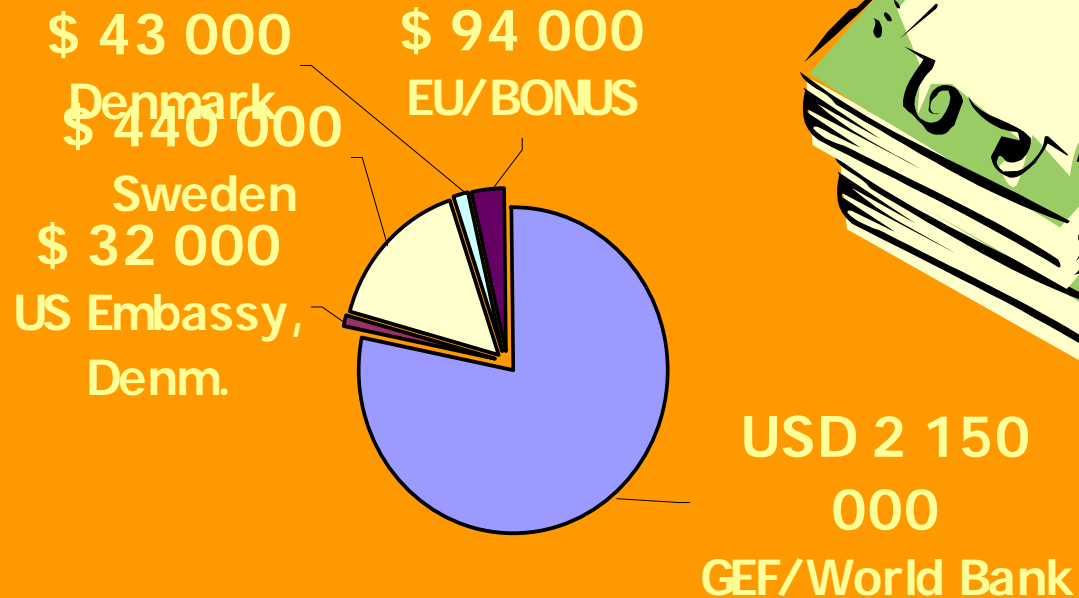
managed by ICES

aims to:

- (a) introduce ecosystem-based assessments and management for the Baltic Sea;
- (b) coordinate and integrate the regional monitoring and assessment capacity;
- (c) improve management practices to sustain fishery yields and biological productivity of the Baltic Sea Large Marine Ecosystem (LME);
- (d) in the long-term, improve both the marine ecosystem and the economic benefits and standard of living of the fishing and coastal communities.

Marine Activities Budget for the 1st phase, 2003-2005

Total: \$ 7 500 000
Cash: \$ 2 761 000



Marine activities

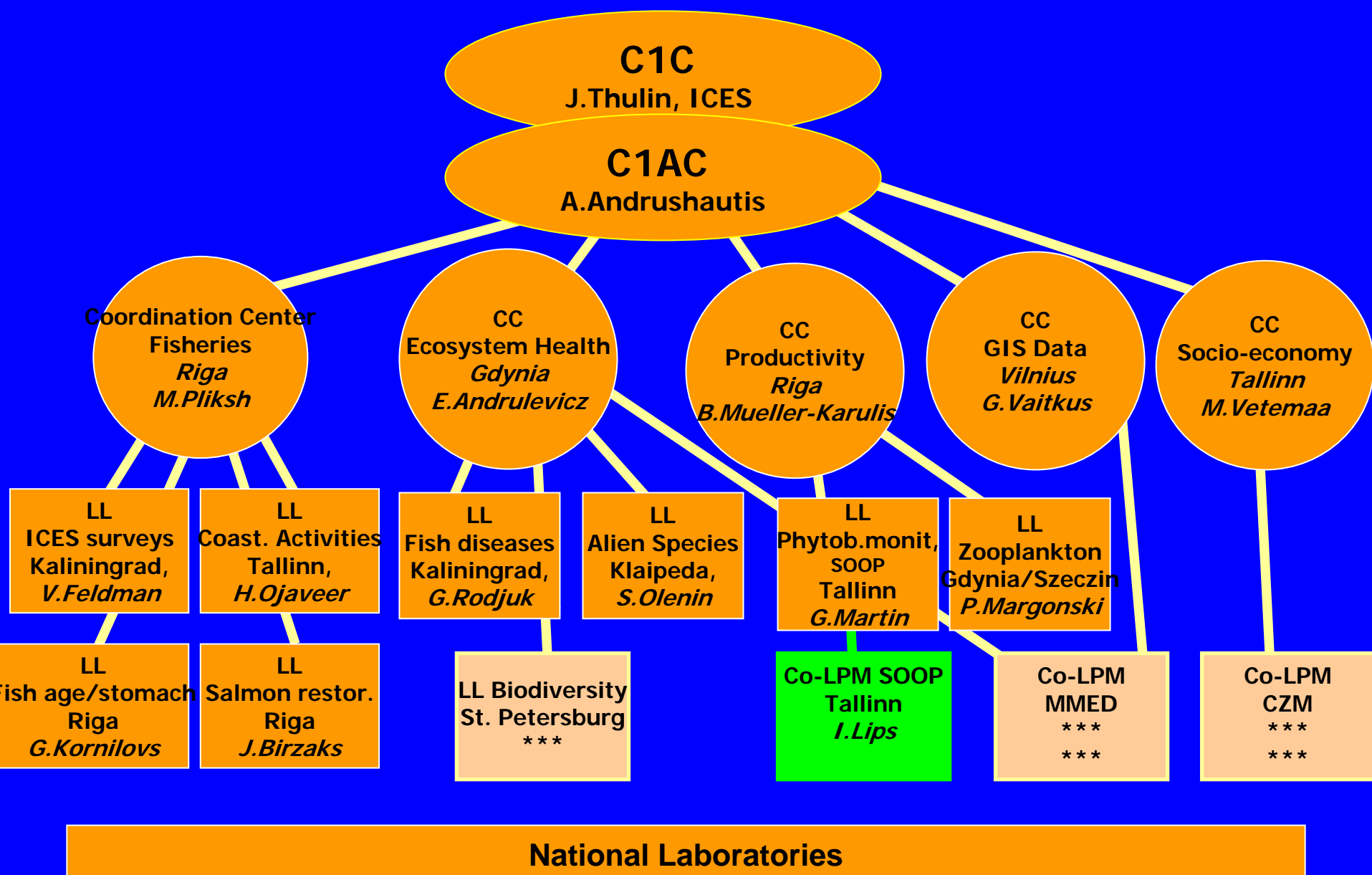
- 17.03.03.: Grant Agreement between GEF and HELCOM signed
- Oct '03-Feb '04: ICES/BSRP SG meetings
- Feb 2004: Coordination Centers and lead laboratories start working
- Spring/summer 2004:
 - Establishment of networks for training, data analysis, field work
 - Assessment of equipment needs
- Winter 2004/2005: Equipment purchases
- Summer 2005: Field activities

Component activities (continued)

- Feb'04 - now: Planning of work in C1 units
- April'04 – now: Establishing network of Project's Partner Institutes
- April'04 – now: Establishing network of national laboratories

Component activities (continued)

- 09.05.04 – First meeting of the BSSG
- June'04 – Networking meeting between BSRP C1 and C2
- July'04 – October'04 – Planning equipment purchases
- October'04 – Second meeting of the BSSG



C1C
J.Thulin, ICES

C1AC
A.Andrushautis

Coordination Center Fisheries
Riga
M.Pliksh

CC Ecosystem Health
Gdynia
E.Andrulevicz

CC Productivity
Riga
B.Mueller-Karulis

CC GIS Data
Vilnius
G.Vaitkus

CC Socio-economy
Tallinn
M.Vetemaa

LL ICES surveys
Kaliningrad,
V.Feldman

LL Coast. Activities
Tallinn,
H.Ojaveer

LL Fish diseases
Kaliningrad,
G.Rodjuk

LL Alien Species
Klaipeda,
S.Olenin

**LL Phytob.monit,
SOOP**
Tallinn
G.Martin

LL Zooplankton
Gdynia/Szczecin
P.Margonski

LL Fish age/stomach
Riga
G.Kornilovs

LL Salmon restor.
Riga
J.Birzaks

LL Biodiversity
St. Petersburg

Co-LPM SOOP
Tallinn
I.Lips

Co-LPM MMED

Co-LPM CZM

National Laboratories

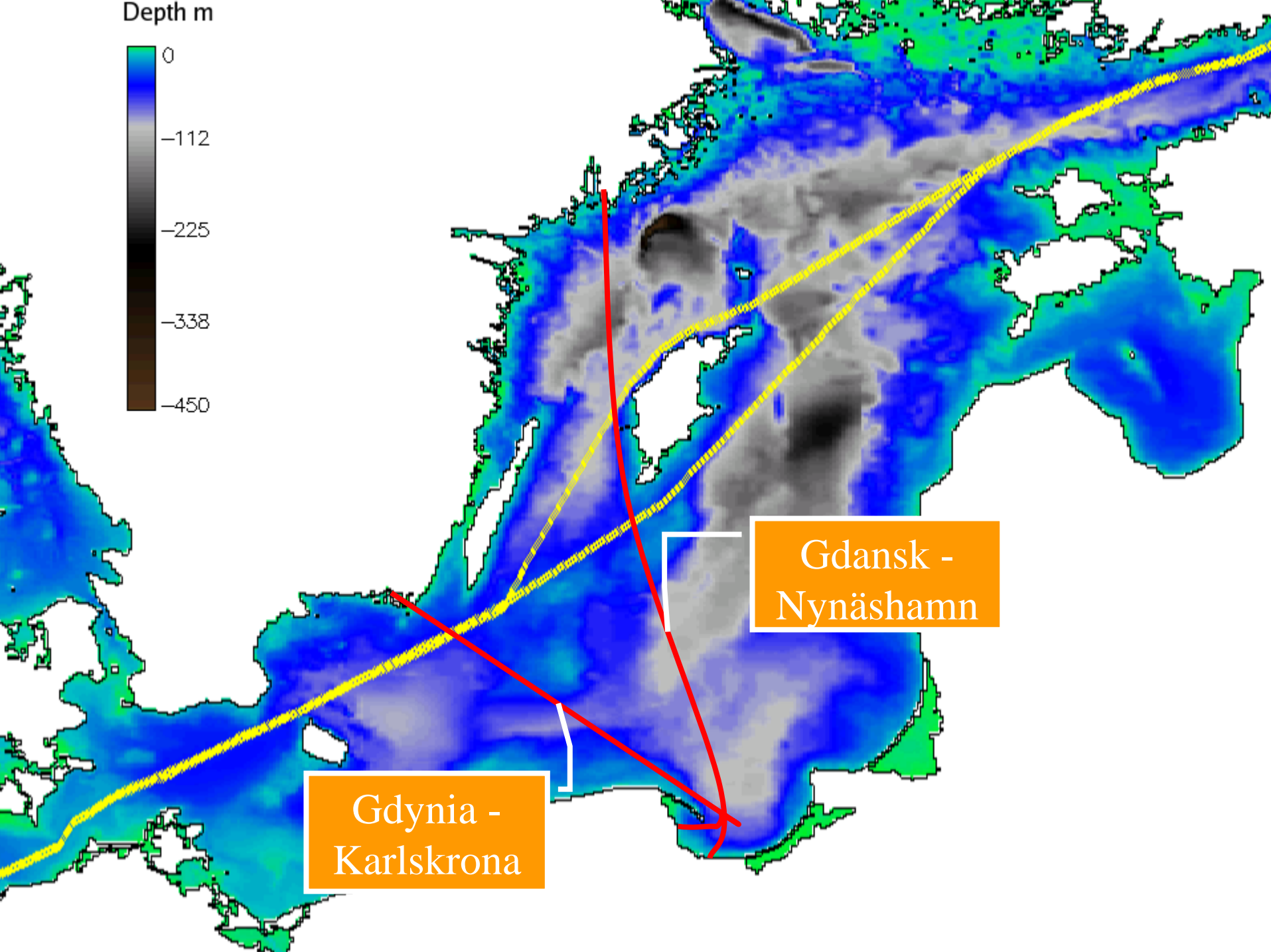
BSRP SOOP activities

- Establishment of a new SOOP line in the Eastern Baltic including CPR
- Support for the existing Tallinn-Helsinki line
- Cooperate with [Alg@line](#) to improve data exchange
- IMWM as partner institute, proposal to establish SOOP line between Gdynia – Karlskrona or Gdansk - Nynäshamn

Ships and routes in the frame of Alg@line



- Silja Line **Silja Serenade:** Helsinki - Stockholm
- Silja Line **Silja Opera:** Helsinki - St. Petersburg
- Tallink **Romantika:** Helsinki - Tallinn
- Finnlines **Finnpartner:** Helsinki - Travemünde
- Kristina Cruises **Kristina Brahe:** Savonlinna - Vyborg - Kotka - Helsinki - Mariehamn
- Transfennica **Transguard:** Hamina - Lübeck
- Coast guard vessel **Telkkä:** Archipelago Sea
- Coast guard vessel **Turva:** Bothnian Bay
- Coast guard vessel **Merikarhu:** Gulf of Finland



CC PROD: Sample Activities

- Strengthen the role of zooplankton in describing the dynamics of the ecosystem
- Testing ECOPATH modelling tool to describe matter/energy flows in selected coastal areas
- Develop BS productivity indicators
- Pilot study on feasibility of joint fisheries/productivity surveys

LL Phytobenthos: Sample Activities

- Establish phytobenthos monitoring as a routine
- Training of phytobenthos monitoring teams for each of beneficiary countries
- Elaborate strategic design for phytobenthos monitoring
- Test HELCOM phytobenthos guidelines in a designated area in each of beneficiary countries and propose necessary modifications

LL SOOP: Sample Activities

- Establish new SOOP line crossing South-Eastern Baltic
- Assist to elaborate advanced data exchange protocol (collaboration with *alga@line*)
- Assist to manage Tallinn – Helsinki SOOP line

CC FFI: Sample Activities

- Assist to improve Baltic fish stock assessment
- Assist to refine input data: catch at age, weight at age, total landings of cod Elaborate ecosystem indicators related to condition of fish populations
- Extend area coverage of BITS and BAD to northern Baltic parts and the coast
- Facilitate national data submission to DATRAS, FishFrame, BAD2 and COBRA data bases

LL Age/Stomach: Sample Activities

- Organize exchange of herring and sprat otholiths to intercalibrate age-reading
- Test use of of the otholith weight method to determine age of Eastern Baltic cod
- Collect and review scattered cod stomach analysis data
- Introduce cod stomach sampling during survey cruises

LL Coastal Activities: Sample Activities

- Assist to improve Baltic coastal fish monitoring
- Collect meta-data base on coastal fish monitoring
- Develop cold-water coastal fish monitoring strategy

CC EH : Sample Activities

- Coordinate elaboration of EH indicators and EcoQOs for the Balthic
- Coordinate pilot study on application of MMED in the Baltic
- Develop strategy for Marine habitat mapping in the Baltic
- Assist introduction of Biological Effects monitoring as a routine (BSRP II phase)
- Coordinate the work of Biodiversity and Alien species LLs