



THE BALTIC SEA

M.Kamińska

O.Casha

N.Shvyreva



REGIONAL OCEAN POLICY



Think globally...

Baltic Sea region



...act regionally

Think globally...



...act regionally

Why Baltic Sea Regional Ocean Policy?



- **CONSCIOUS** of the values of the marine environment of the Baltic Sea Area, uniqueness and sensitivity of the sea and its living resources;
 - **BEARING** in mind the economic, social and cultural values of the Baltic Sea Area for the prosperity and development of the peoples;
 - **NOTING** with deep concern the still ongoing degradation of the Baltic Sea environment, its water pollution and living resources depletion;
 - **DECLARING** a firm determination to assure the ecological restoration of the Baltic Sea;
 - **RECOGNIZING** that the protection and enhancement of the marine environment of the Baltic Sea Area are tasks that can effectively be accomplished only by close regional co-operation;
 - **APPRECIATING** the achievements in environmental protection within the previous initiatives;
 - **CONSCIOUS** of the importance of transparency, public awareness and public participation for successful protection of the Baltic Sea Area;
- DETERMINED** to develop a Baltic Sea Region Ocean Policy in order to protect the marine environment and encourage sustainable use of the Baltic Sea.

THE BALTIC SEA



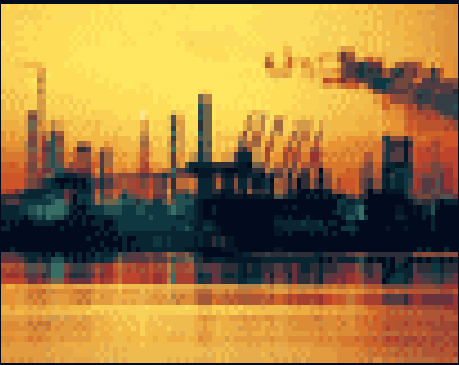
MAIN CHARACTERISTICS

- The largest body of brackish water in the world - relatively shallow
- Limited water exchange - 25-35 years turnover
- Oxygen deficit and its depletion in the deeper parts.
- Nine countries border the sea: Denmark, Germany, Poland, Russia, Lithuania, Latvia, Estonia, Finland, Sweden
- 85 million people live within the drainage area.
- Densely settled and intensively industrialised.
- Very sensitive sea in great trouble and an ecosystem under extreme stress.



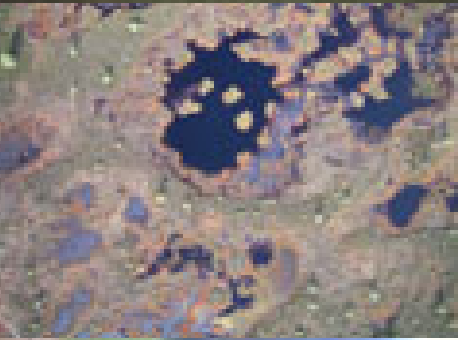
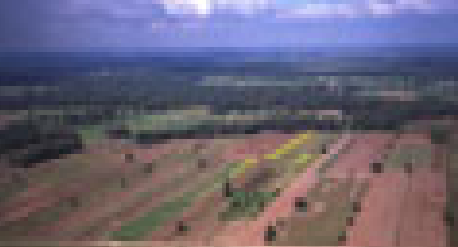
INDUSTRY

- Industries in transition especially in the eastern part of the region.
- Lack of economic foundation hinders environmentally sound practices
- Most damaging industries:
 - pulp and paper
 - chemical industries
 - metal producing / processing plants
- Pollution from industry:
 - air borne – oxides NO_x , PO_x , SO_x , ...
 - waste water – organic substances, PCBs, heavy metals, ...



AGRICULTURE

- Almost $\frac{1}{4}$ of the drainage area of the Baltic is used for agricultural cultivation.
- Agricultural activities within the Baltic Sea drainage area account for:
 - 200,000 tons of **nitrogen**
 - 5,000 tons of **phosphorus** entering the Baltic Sea each year.
- Marine **eutrophication**:
 - one of the most serious environmental problems in the Baltic Sea.
- Agriculture also introduces **pesticide** residues to the atmosphere and the water.



TRANSPORT



- Pollution from transport - gaseous emissions from exhaust systems:
 - nitrogen oxides
 - sulfur dioxide
 - volatile organic compounds (including several toxic, persistent and bioaccumulating substances)
 - metals and carbon dioxide.

- The transport sector contributes between 40-80% of the total emissions of nitrogen oxides.

SHIPPING



- In 2000, 80 million tons of oil were transported through the Baltic Sea.
- There are between 500 and 1,000 illegal oil discharges detected every year.
- An increasing number of illegal operational oil spills, explained by:
 - increased shipping
 - increased number of sub-standard ships
 - outdated oil and waste reception facilities in a number of countries.

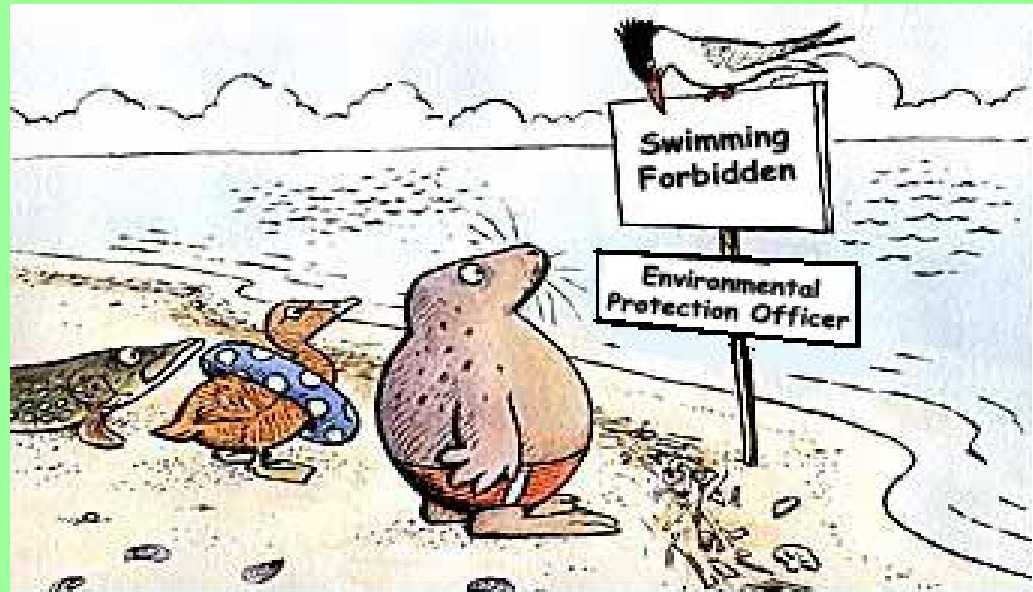
LIVING RESOURCES

- Fish stock are becoming dangerously low because of overfishing and degradation of marine environment.
- The Baltic wild salmon freshwater habitat degradation.
- Suffering of living resources from hazardous substances (PCBs, etc.).
- Threats to mammals species.
- Invasive species.



EFFECTS ON BIODIVERSITY

- Loss of habitats
- Biodiversity reduction
- Invasive species



VISION

The essential objective of the Baltic Sea Regional Ocean Policy is the improvement of the livelihood of the people within the framework of sustainable development, sustainable management of natural resources and protection of the environment of the Baltic Sea Area



GUIDING PRINCIPLES

- Improving the Understanding of the Baltic Sea
- Sustainably Develop and Manage the Use of the Baltic Sea
- Improvement and Maintaining the Health of the Baltic Sea
- Promoting the Peaceful Use of the Baltic Sea
- Creating Partnership and Promoting Co-Operation

Improving the Understanding of the Baltic Sea

By...

- gaining information about the Baltic Sea and facilitating access to this information
- strengthening regional and national capacity, encouraging partnership between different organizations, public and private sectors
- promoting further education and training of people

Sustainable Developing and Managing the use of the Baltic Sea

By...

- identifying and implementing development and management actions in accordance with the precautionary approach
- encouraging equitable sharing of resources access and benefits at different levels
- involving local communities and other stakeholders in resources management and decision making
- building capacity of Baltic communities for sustainable resource development and management

Improvement and Maintaining the Health of the Baltic Sea

By...

- adopting an integrated transboundary approach
- incorporating sound environmental practices into economic activities
- protecting and conserving biological diversity
- reducing the impact of pollution from different sources

Promoting the Peaceful Use of the Baltic Sea

By...

- ensuring that all activities carried out in the Baltic Sea do not cause environmental damage, social and economic hardship
- ensuring that the Sea is used only for peaceful and legal activity

Creating Partnership and Promoting Co-Operation

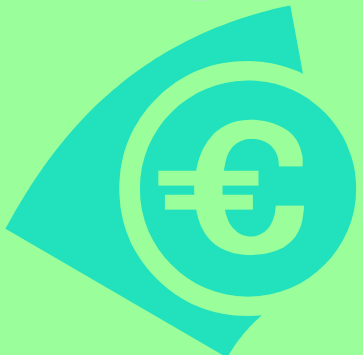
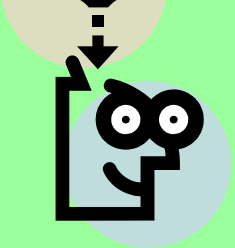
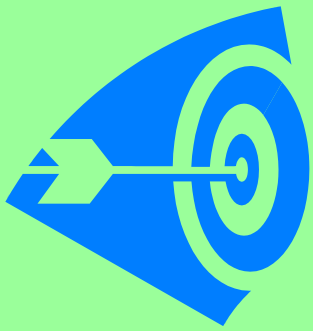
By...

- maintaining sovereign rights and responsibilities in managing, protecting and developing the Baltic Sea
- encouraging partnership and cooperation in the sustainable use of resources

OBJECTIVES

- Reduce the amounts of nutrients entering from different sources (agriculture, waste water treatment plants, airborne pollution)
- Reduce and further prevent the amounts of hazardous substances from different sources
- Improve maritime safety
- Reduce emissions and waste discharges and improve response to accidents and pollution incidents
- Achieve healthy communities of plants and animals
- Prevent introduction of invasive species
- Restore degraded habitats
- Sustainable fishery
- Decrease dependency on non-renewable sources of energy
- Sustainable transport
- Sustainable tourism

ACTIONS & IMPLEMENTATION



- Actions
- Actors
- Institutional arrangements
- Financial resources

FOCUS ON KEY ISSUES

Actions

Agriculture sector

- ◆ Education and training program for farmers & consumers
- ◆ BAP – Best Available Practice in Agricultural Sector
- ◆ Coordination Center for Sustainable Agriculture in the Baltic Sea

Actors: Sector, national and international authorities, the EU and HELCOM, agricultural schools, the extension services, universities, research institutes, farmers' organisations, NGOs and agrobusiness

AGRICULTURE



FOCUS ON KEY ISSUES

Actions

Industry

- ◆ Continue the program of the waste water treatment
- ◆ Enforcement of EU Water Quality Standards
- ◆ Education and training of specialists
- ◆ Improve mechanisms of monitoring of illegal discharges
- ◆ Public awareness and education

Actors: Sector, national and international authorities, the EU and HELCOM, the extension services, universities, research institutes, private sector, NGOs

FOCUS ON KEY ISSUES

Actions

Transport

- ◆ Designation of the Baltic Sea as a Particularly Sensitive Sea Area
- ◆ Obligatory pilotage in the Danish Straits
- ◆ Reception facilities in harbours, ports, marinas
- ◆ Strengthen of the surveillance illegal discharges from the ships
- ◆ Carry out a project on developing guidelines, criteria and recommendations for a sustainable transport system development

Actors: Sector, national and international authorities, the EU and HELCOM, port authorities, private sector, extension services, research institutes, NGOs

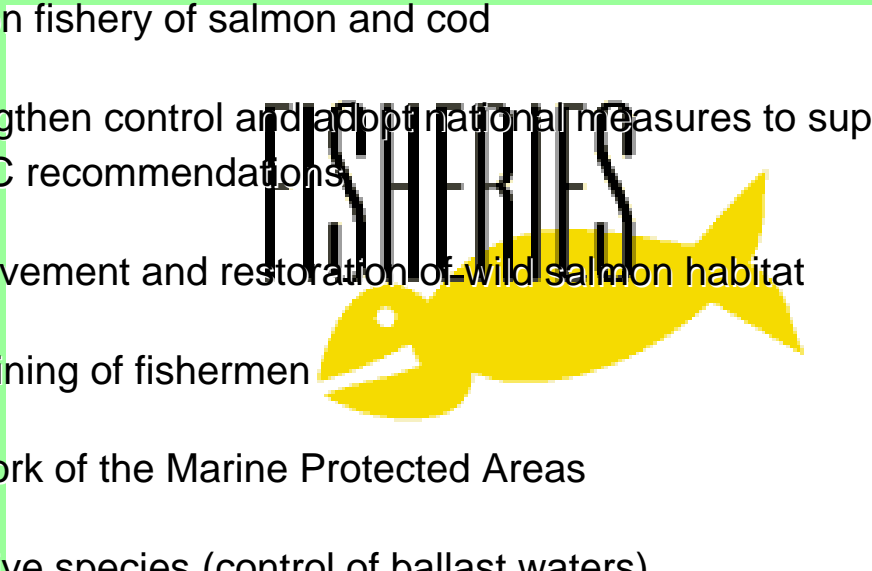
FOCUS ON KEY ISSUES

Actions

Living resources

- ◆ Develop long term strategy for major fish stock (cod, salmon, herring, sprat)
- ◆ Ban on fishery of salmon and cod
- ◆ Strengthen control and adopt national measures to supplement IBSFC recommendations
- ◆ Improvement and restoration of wild salmon habitat
- ◆ Retraining of fishermen
- ◆ Network of the Marine Protected Areas
- ◆ Invasive species (control of ballast waters)

Actors: Sector, national and international authorities, the EU and HELCOM, IBSFC and European Inland Fisheries Advisory Commission (EIFAC), the extension services, universities, research institutes, private sector, Hydro-electric Power plants, NGOs



FOCUS ON KEY ISSUES

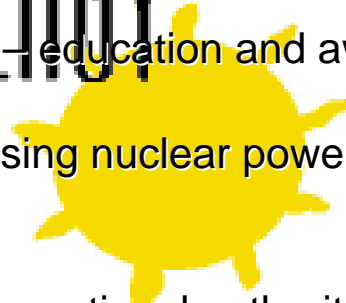
Actions

Energy

- ◆ Increasing renewable energy and promoting increased energy efficiency and energy savings
- ◆ Financial support to initiate renewable energy production
- ◆ Promote renewable energy – education and awareness
- ◆ Program on progressive closing nuclear power plants stations

Actors: Sector, national and international authorities, the EU and HELCOM, agriculture, industry, transport, the extension services, universities, research institutes, private sector, NGOs

ENERGY



FOCUS ON KEY ISSUES

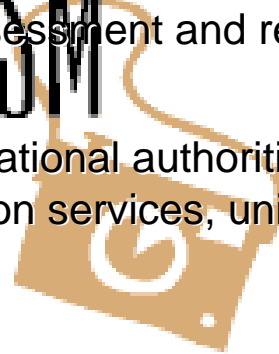
Actions

Tourism

- ◆ Education and public awareness
- ◆ Promotion of sustainable tourism on the national level
- ◆ Research carrying capacity assessment and recommendations

Actors: Sector, national and international authorities, the EU and HELCOM, VASAB, the extension services, universities, research institutes, NGOs

TOURISM



INSTITUTIONAL ARRANGEMENTS

■ LEGISLATION

- International Conventions
- International Legislation
- National Legislation

■ INSTITUTIONS

- Coordination Board on Baltic Sea Regional Ocean Policy

In close co-operation with...

International governmental organizations

- European Union
- Helsinki Commission
- International Baltic Sea Fishery Commission
- Nordic Council of Ministers
- UN Economic Commission for Europe
- UN Environment Programme
- Vision and Strategies around the Baltic Sea 2010
- Baltic Sea Secretariat for Youth Affairs
- ...

International Network of Local Authorities

- International Council for Local Environmental Initiatives
- Union of the Baltic Cities
- ...

International Business Sector Network

- Baltic Fishermen Association
- Baltic Ports Organization
- Baltic Sea Tourism Commission
- International Chamber of Commerce
- International Network for Environmental Management
- World Business Council for Sustainable Development
- ...

Other International Organizations

(including but not limited to NGOs)

- Association of European Universities
- Baltic Local Agenda 21 Forum
- Baltic University Programme
- Coalition Clean Baltic
- European Union for Coastal Conservation
- Keep Baltic Tidy
- WWF International
- ...

Financial instruments of policy implementation

- National and International budgets
- International Financial Institutions
 - European Bank for Reconstruction and Development
 - European Investment Bank
 - Nordic Environment Finance Corporation
 - Nordic Investment Bank
 - World Bank
- Other financial instruments as...
 - Private sector (incl. international business sector)
 - Foundations
 - Taxes
 - Co-sharing of costs
 - Loans
 - ...

General Conclusions

- The Baltic Sea Regional Ocean Policy should be based on our common vision of the Baltic Sea future
- The Policy is the result of a regional effort to achieve responsible maritime governance based on existing international and regional agreements
- The Policy articulates guiding principles and strategic actions for cooperation and coordination to sustainably manage and conserve Baltic Sea environment and to achieve a better quality of living for the Baltic nations
- The implementation of the Policy will require a commitment by all stakeholders of different levels



Thank you very much for your attention!

