



GEF

**Baltic Sea Regional Project:
*1st phase 2003-2006***

**views on management and
implementation**



**5 eastern countries requested support from
GEF** *1995-1997*

HELCOM - IBSFC – ICES *1998-2001*

National consultations *1998-2001*

BS LME Workshop *2001*

Draft PIP *2001*

BSRP approved/launched *2003*

BSRP running 1st phase *2003-now*



International Managing Bodies

BSRP: HELCOM and ICES



International Baltic Sea

Fishery Commission



Scientific Advice

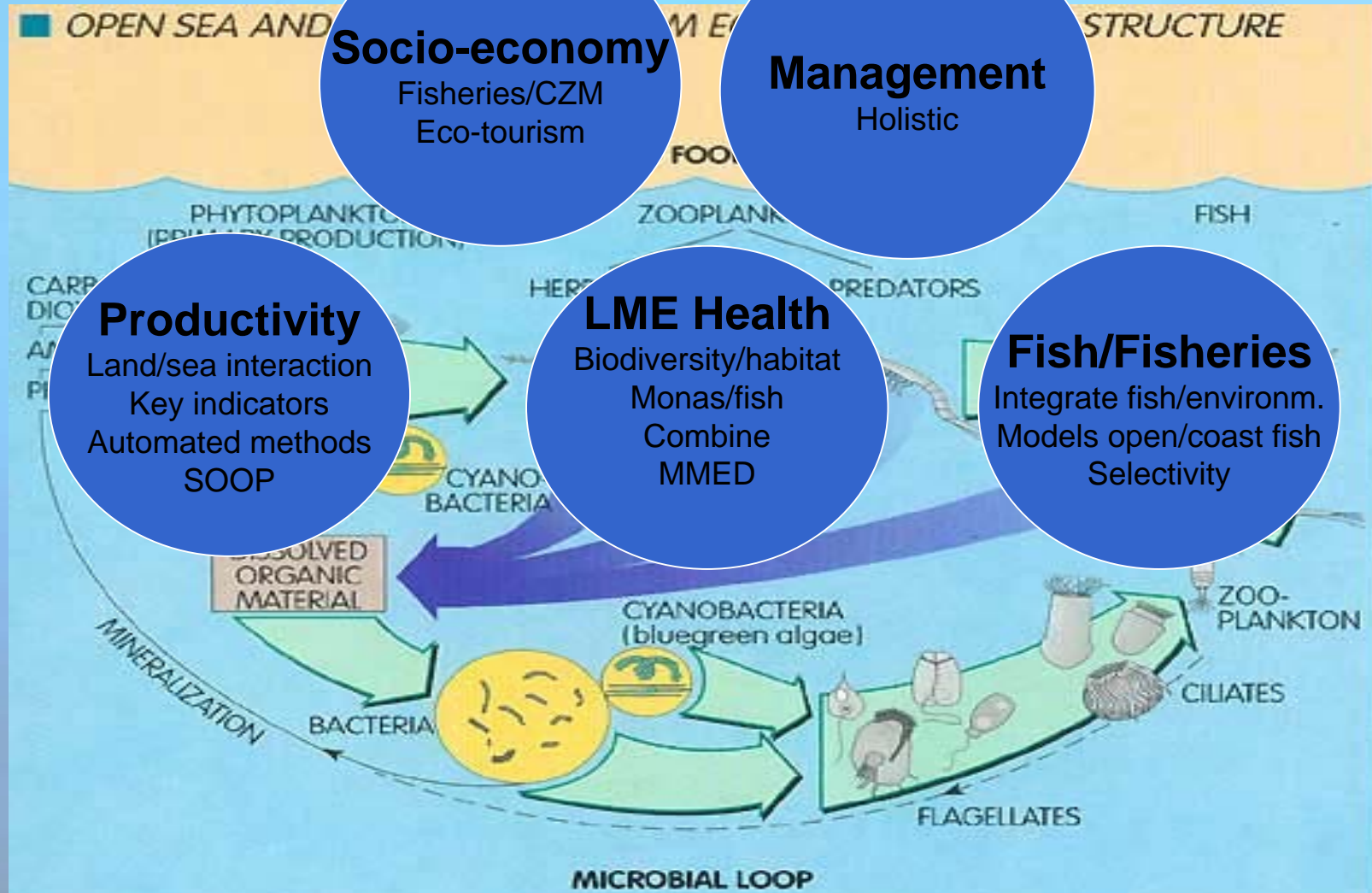


International Council for
the Exploration of the Sea
Conseil International pour
l'Exploration de la Mer

350 scientists

Baltic Sea LME concept

GEF/SHF/BSRP/ICL/OW meeting
Vilnius, Lithuania, 12-13 January 2006





The Baltic LME concept

Strengthening technical capacity

Land

Training farmers

Grant/Credit on-farm investments. Salmon river rest.

Modeling water quality and nutrient transport

Marine

Coastal

CZM

Fish/envionm.

Toxins/impact

COMBINE

Ecosystem Health parameters

Ships of Opportunity

Joint integrated ass. surveys

Strengthening technical capacity, WS.s

Upgrade laboratories and ships

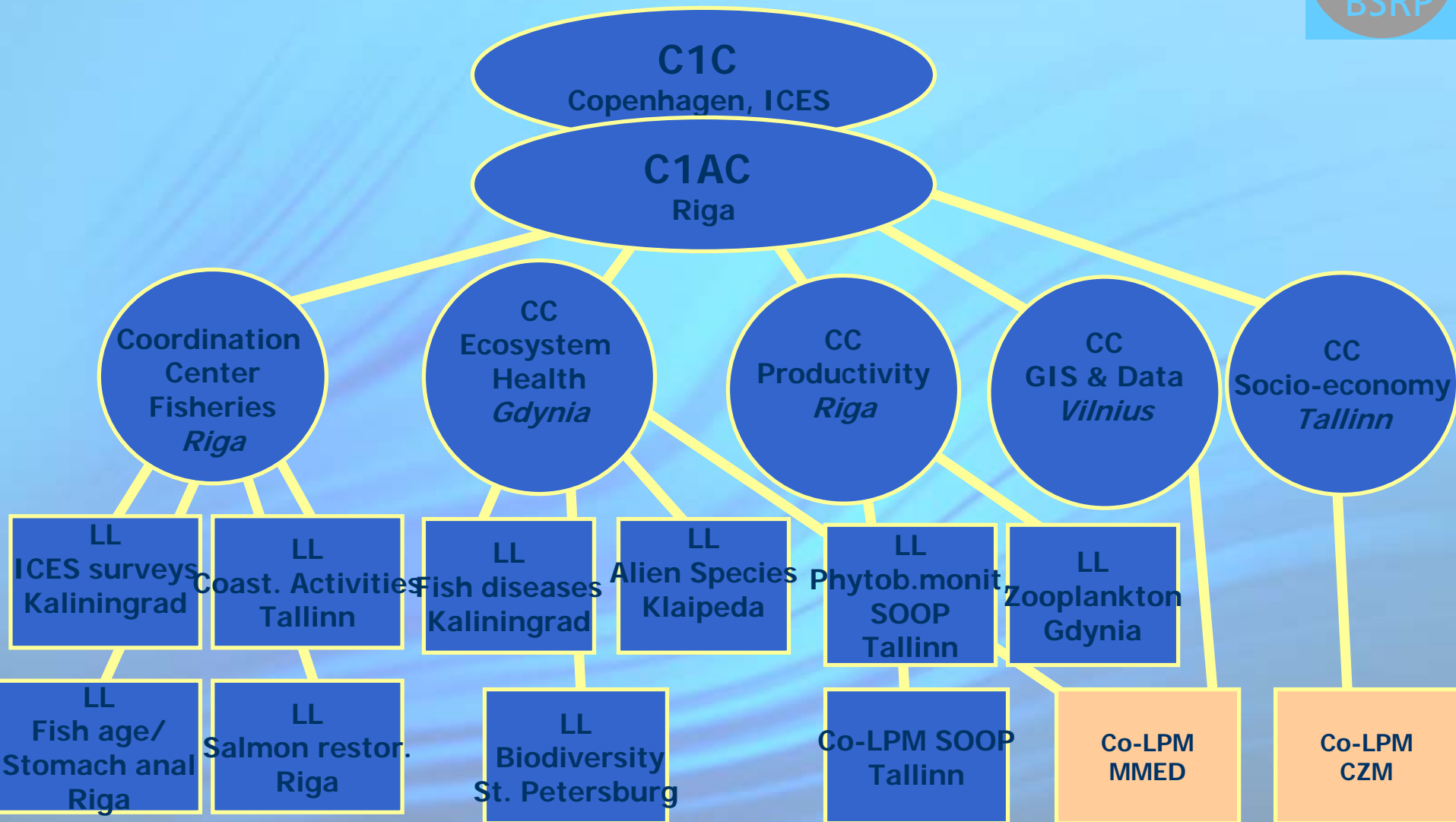
Improve scientific/and political coordination

C1

C2

Component 1 Working Structure

GEF/BSRP C1/C2 Network meeting
Vilnius, Lithuania, 12-13 January 2006



20 TECHNICAL ASSISTANTS AT PARTNER INSTITUTES

BSRP 1st phase

Actors:

- Scientists/farmers + Cooperation, coordination
- Politicians - Too much nationalists
- Conventions – + Strengthened
- International organizations + MoU , LoA , + network
- Cooperators + EU , Regional Program eg.MARE, Institutions





Major strength: Organization

BIREME BONUS BONUS-169

SAFMAMS

Cooperating with certain western key
Institutes

Highly qualified staff

Achieving high technical capacity

Major challenge: **POLITICIANS** (national owners)



Key-words for the 2nd phase:

INTEGRATION (internal and external) and
OUTREACH

GEF/BSRP: has been a Catalyser in facilitating
the ecosystem approach to management of the
Baltic Sea