



GEF Baltic Sea Large Marine Ecosystem

Status and views on
management and implementation



Baltic Sea: Main Characteristics

- Semi-enclosed brackish water area
- Persistent vertical layers
- Residence time of water : 25yrs
- Renewal of bottom-water: unpredictable - often stagnation periods
- Plants/animals: low numbers - stressed
- Large catchment area with land use activities strong effect on water quality - population - 85 million



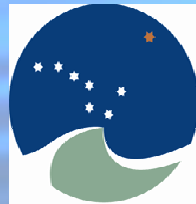
International Managing Bodies



International **Baltic Sea**
Fishery **Commission**

BSRP

Scientific Advice



International Council for
the Exploration of the Sea
Conseil International pour
l'Exploration de la Mer

ICESCIEM

350 scientists



The Baltic LME concept

Strengthening technical capacity

Land

Coastal

Training farmers

Grant/Credit on-farm investments. Salmon river rest.

Modeling water quality and nutrient transport

Marine

CZM

Fish/envionm.

Toxins/impact

COMBINE

Ships of Opportunity

Joint integrated ass. surveys

Ecosystem Health parameters

Strengthening technical capacity, WS.s

Upgrade laboratories and ships

Improve scientific/and political coordination

C1

C2



2003-2008: Budget 40 M. US\$ (GEF 18 M. US\$)

Phase 1: 2003-2006: Introduction of the Ecosystem Approach

12 M. (5.5) US\$

Phase 2: 2006-2007: Demonstration of the Ecosystem Approach

21 M (10) US\$

Phase 3: Expanding Application of the Ecosystem Approach: 2007-2008

7 M (2.5) US\$

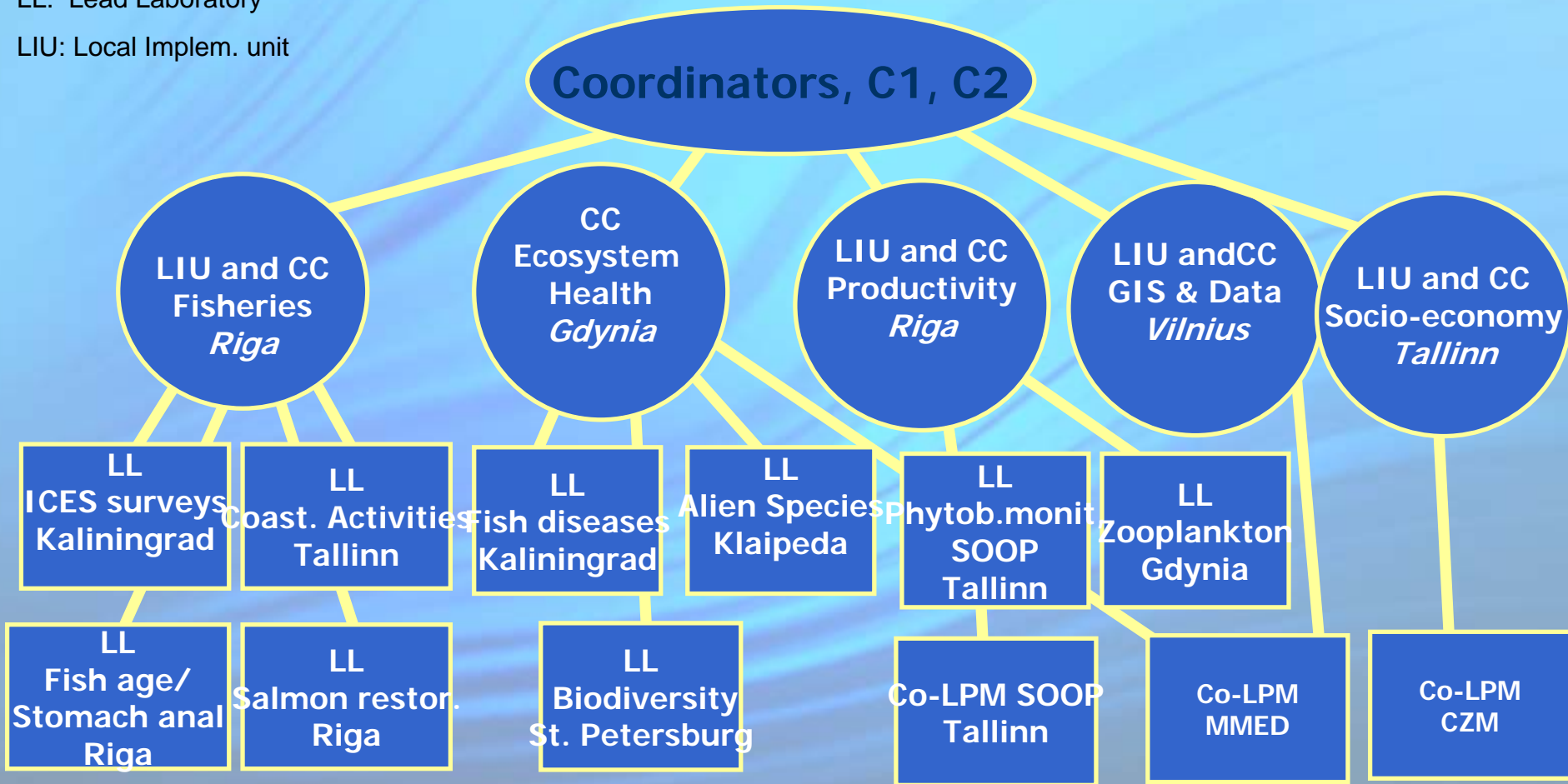


Working Structure

CC: Coordination Centre

LL: Lead Laboratory

LIU: Local Implem. unit



+

Institutes in Denmark, Finland, Germany, Sweden and USA



Phase 1

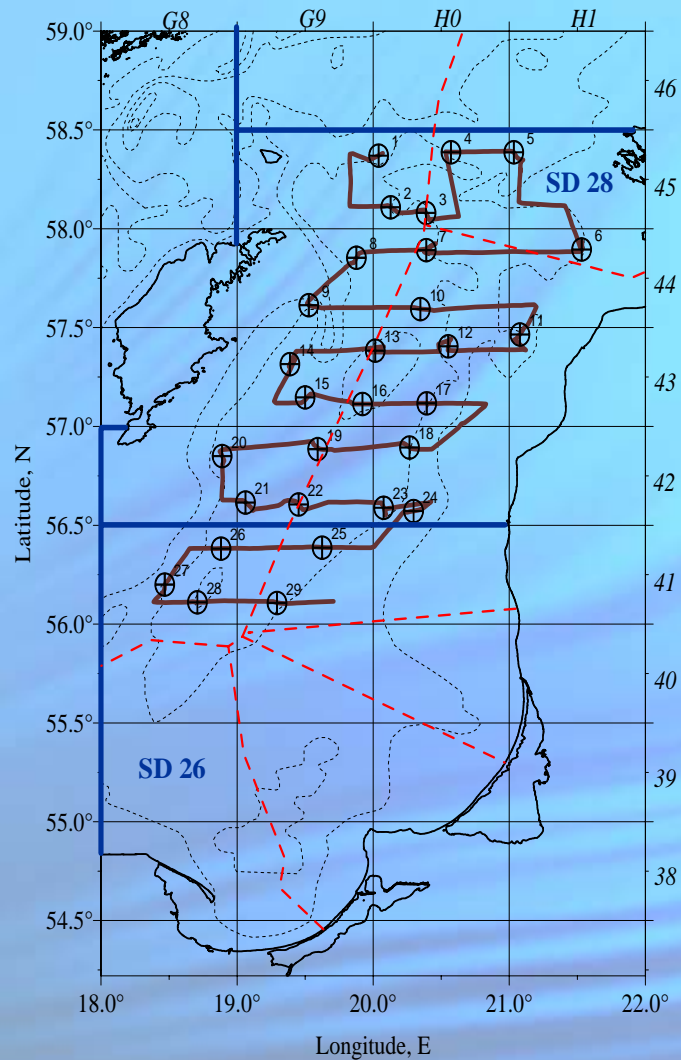
Major strength: Organization and net-work

Cooperating Institutes in kind	3 M US\$/y
EU-project BONUS	1M US\$/y
EU-project SAFMAMS	0.2 US\$/y
(EU-project BONUS-169	70M US\$/y)

Challenge :

Phase 2: 2006-2007: Demonstration of the
Ecosystem Approach

21 M (10) US\$



BSRP joint fisheries/productivity cruise,
14 - 24.05.05 R/V Baltica (Poland)

ICES/BSRPFish Disease Sea-going
Workshop: 10 days December 2005

Walther Herwig III (Germany)

Figure 1. Cruise track design and hauls of Latvian-Polish hydroacoustic survey.
(r/v "Baltica", 14.-24.05.2005)



New reports

EcoQOs and Indicators
Were proposed and
discussed for

Eutrophication

Contamination

Overfishing

Loss of Biodiversity

REPORT OF THE ICES/BSRP/HELCOM/UNEP REGIONAL SEAS WORKSHOP ON BALTIC SEA ECOSYSTEM HEALTH INDICATORS

30 MARCH–1 APRIL 2005

SOPOT, POLAND



International Council for the Exploration of the Sea



International Council for the Exploration of the Sea

Conseil International pour l'Exploration de la Mer

Please read it and comment !!!



Visit the Baltic Sea next time

Thank you

