



HELCOM ICES and their Baltic Sea Regional Project, BSRP

BSRP

Jan Thulin

ICES and HELCOM

jan@ices.dk



Baltic Sea: Main Characteristics

- Semi-enclosed brackish water area
- Persistent vertical layers
- Residence time of water : 25yrs
- Renewal of bottom-water: unpredictable - often stagnation periods
- Plants/animals: low numbers - stressed
- Large catchment area with land use activities strong effect on water quality - population - 85 million



International Managing Bodies



2006 0101



International Baltic Sea

Fishery Commission

Scientific Advice



International Council for
the Exploration of the Sea
Conseil International pour
l'Exploration de la Mer

350 scientists



5 eastern countries requested support from

GEF *1995-1997*

HELCOM - IBSFC – ICES *1998-2001*

National consultations *1998-2001*

BS LME Workshop *2001*

Draft Project Implementation Plan *2000-2001*

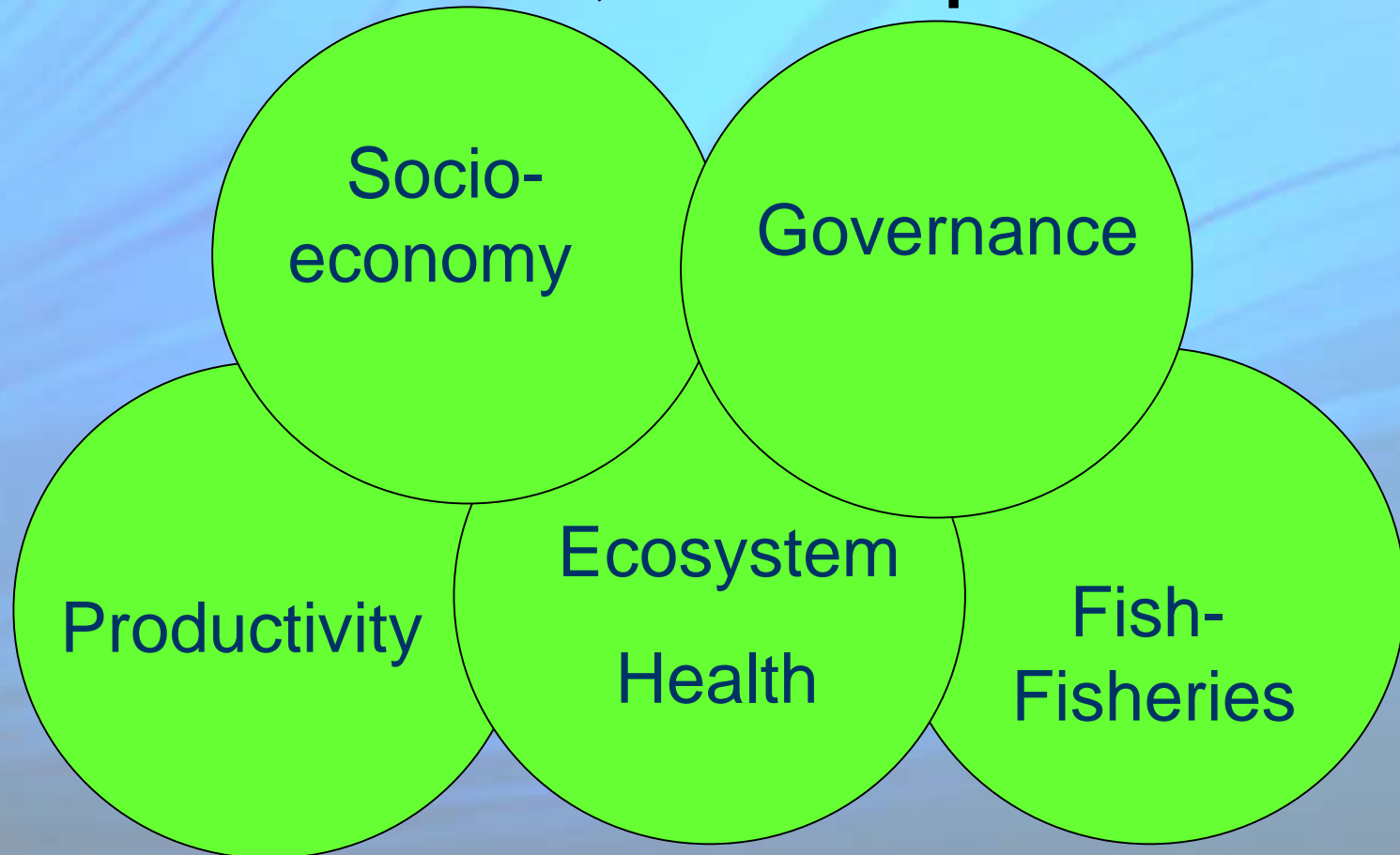
BSRP approved/launched *2003*

BSRP running 1st phase *2003-now*

Budget: 40 mill US\$ 2003-2008



The Large Marine Ecosystem, LME, concept





BSRP is managed by HELCOM

in full cooperation with ICES

Aims

- * Facilitate ecosystem-based assessments to strengthen the management of Baltic Sea***
- * Strengthening of regional institutions through capacity building efforts***
- * Inform and engage stakeholders and decision-makers on the project approach and objectives***
- * Assess and evaluate the socio-economic effects of the ecosystem-based management for farming, fishing and coastal communities***



The Baltic LME concept

Strengthening technical capacity

Land

Training farmers

Grant/Credit on-farm investments. Salmon river rest.

Modeling water quality and nutrient transport

Coastal

CZM

Fish/envionm.

Toxins/impact

COMBINE

Marine

Ships of Opportunity

Joint integrated ass. surveys

Ecosystem Health parameters

Strengthening technical capacity, WS.s

Upgrade laboratories and ships

Improve scientific/and political coordination

The Large Marine Ecosystem Activities

C1

The Land Coastal Management Activities

C2

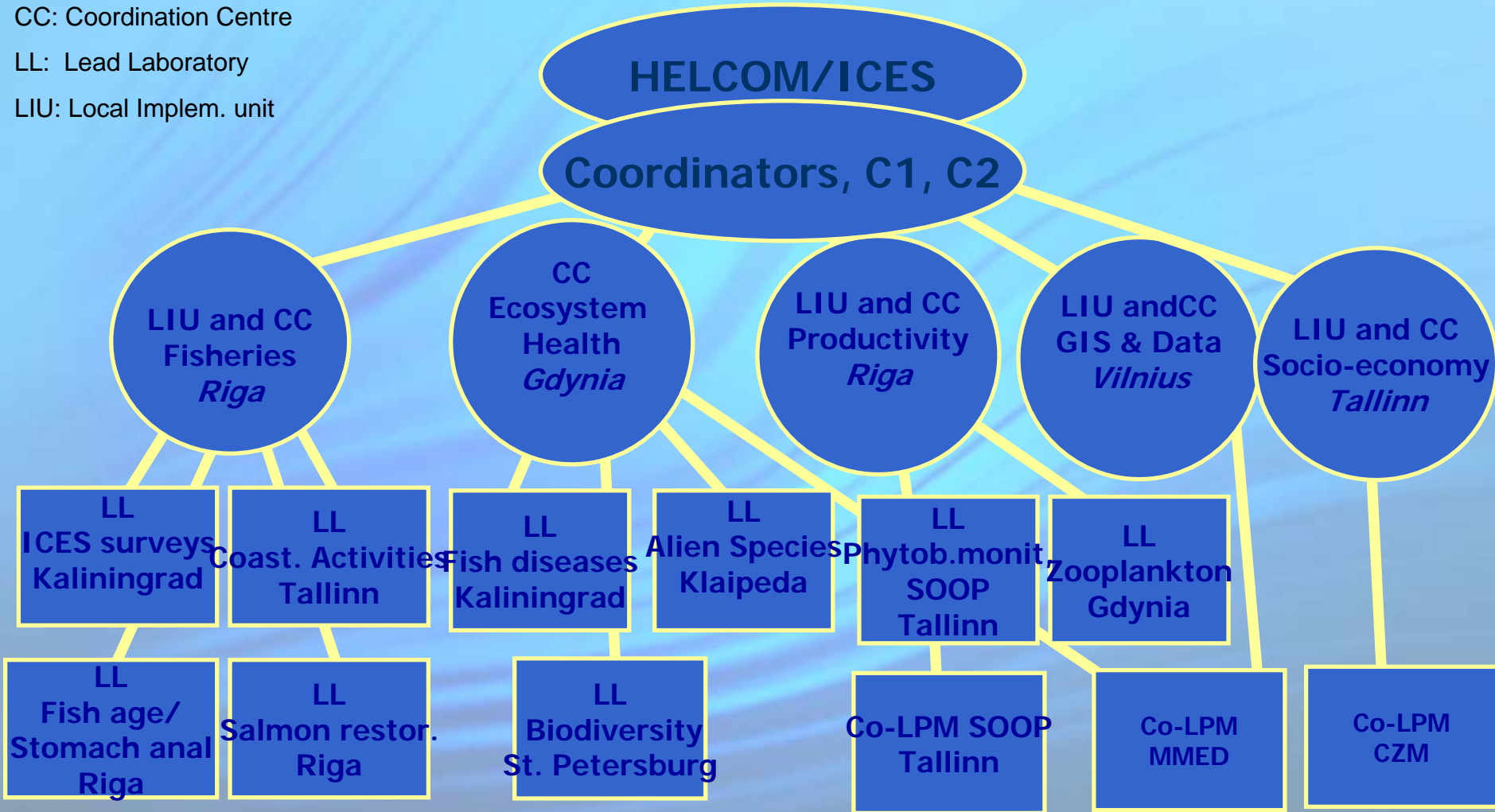


BSRP Working Structure

CC: Coordination Centre

LL: Lead Laboratory

LIU: Local Implem. unit



Total staff 60



ICES

ICES Baltic Committee

CC = Coordination Center

LL = Lead Laboratory



**Coope-
Rating
Countries
Organisa-
tions
-projects**

LL Surveys Kaliningrad

LL Coastal Fish monit. Tallinn

LL Phytobenthos monit. / SOOP Tallinn

LL Biological Effects monitoring Gdynia

LL Zooplankton Gdynia/Szczecin

LL Invasive species Klaipeda/St. Petersburg

LL Histopathology Kaliningrad

CC GIS Data Vilnius

CC Socio-economy Tallinn

WG Ecosystem modelling

LL Fish age/stomach Riga

LL Salmon restor. Riga



Actors:

- Scientists/farmers ++ Cooperation, coordination
- Politicians - - + Too much nationalists
- Conventions - + Strengthened
- International organizations - + MoU , LoA , + network
EU , EEA, US EPA NOAA
- Cooperators + Regional Program,
Institutions



Major strength: **Organization + Money**

BIREME BONUS BONUS-169

SAFMAMS SIDA NEFCO

Cooperating with western key Institutes

Highly qualified staff

Achieving high technical capacity

Major challenge: **POLITICIANS (national owners)**



Key-words for the future:

INTEGRATION (internal and external) and
OUTREACH

GEF/BSRP: has been a Catalyser in facilitating
the ecosystem approach to management of the
Baltic Sea