
DATRAS Specification Document Areas in DATRAS Products

Contents

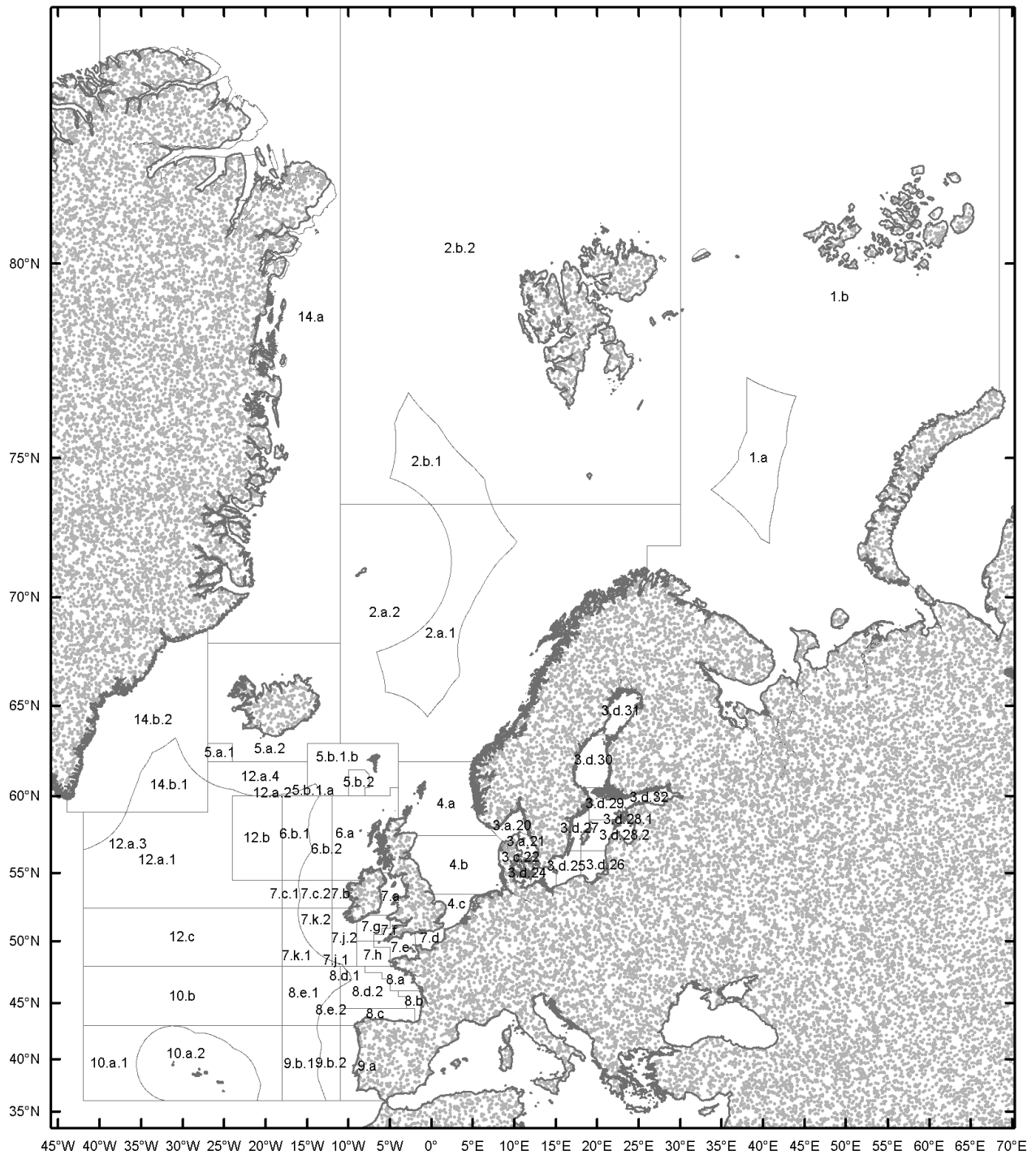
Introduction	2
ICES Statistical Areas	3
BITS	4
NS-IBTS	5
IBTS Western and Southern Areas	6
EVHOE	7
Scottish demersal areas (SWC-IBTS)	8
Scottish SCOWCGFS q1 strata	9
Scottish SCOWCGFS q4 strata	10
Scottish Rockall Survey strata	11
NIGFS areas	12
IGFS strata	13
Groundfish surveys	14
FR-CGFS	15
SP-NORTH (North of Spain) and SP-ARSA (in the Gulf of Cadiz)	16
SP-Porcupine	17
PT-IBTS	18
BTS	19
Geographic distribution of the offshore BTS surveys	19
BTS Otoliths Areas	20
BTS-VIII (ORHAGO)	21

Introduction

Many DATRAS products refer to different survey areas. To help DATRAS data users with finding the relevant spatial references, all DATRAS survey maps are collected in one document. Maps are named by the survey acronyms as is referred to in DATRAS. As a source, survey manuals as well as maps kindly provided by the data submitters are used. ICES area map is produced by ICES Data Centre.

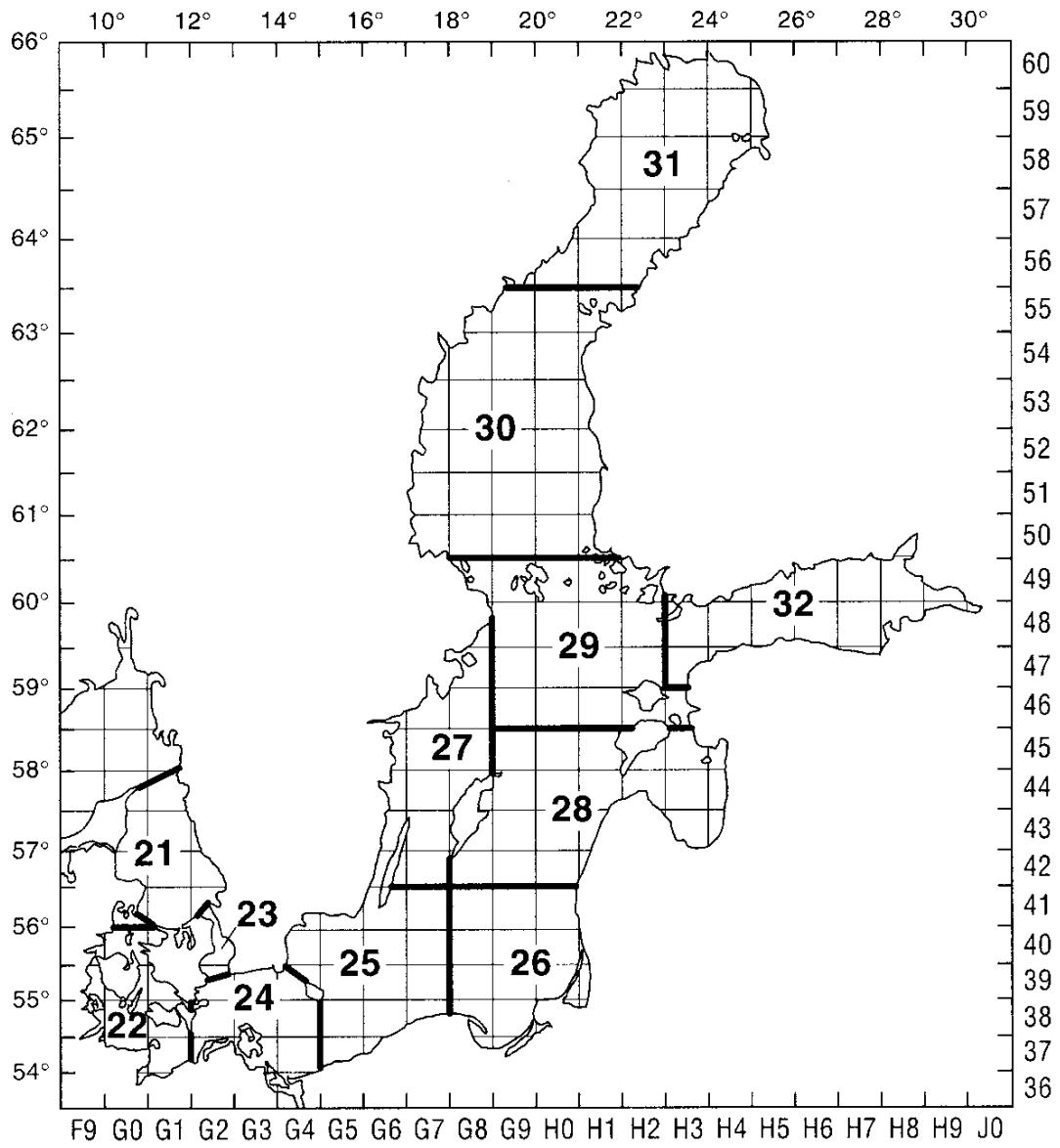
ICES Statistical Areas

ICES area references are used in some data products for surveys like IE-IGFS and SCOWCGFS. More information can be found at <http://ices.dk/marine-data/maps/Pages/default.aspx>



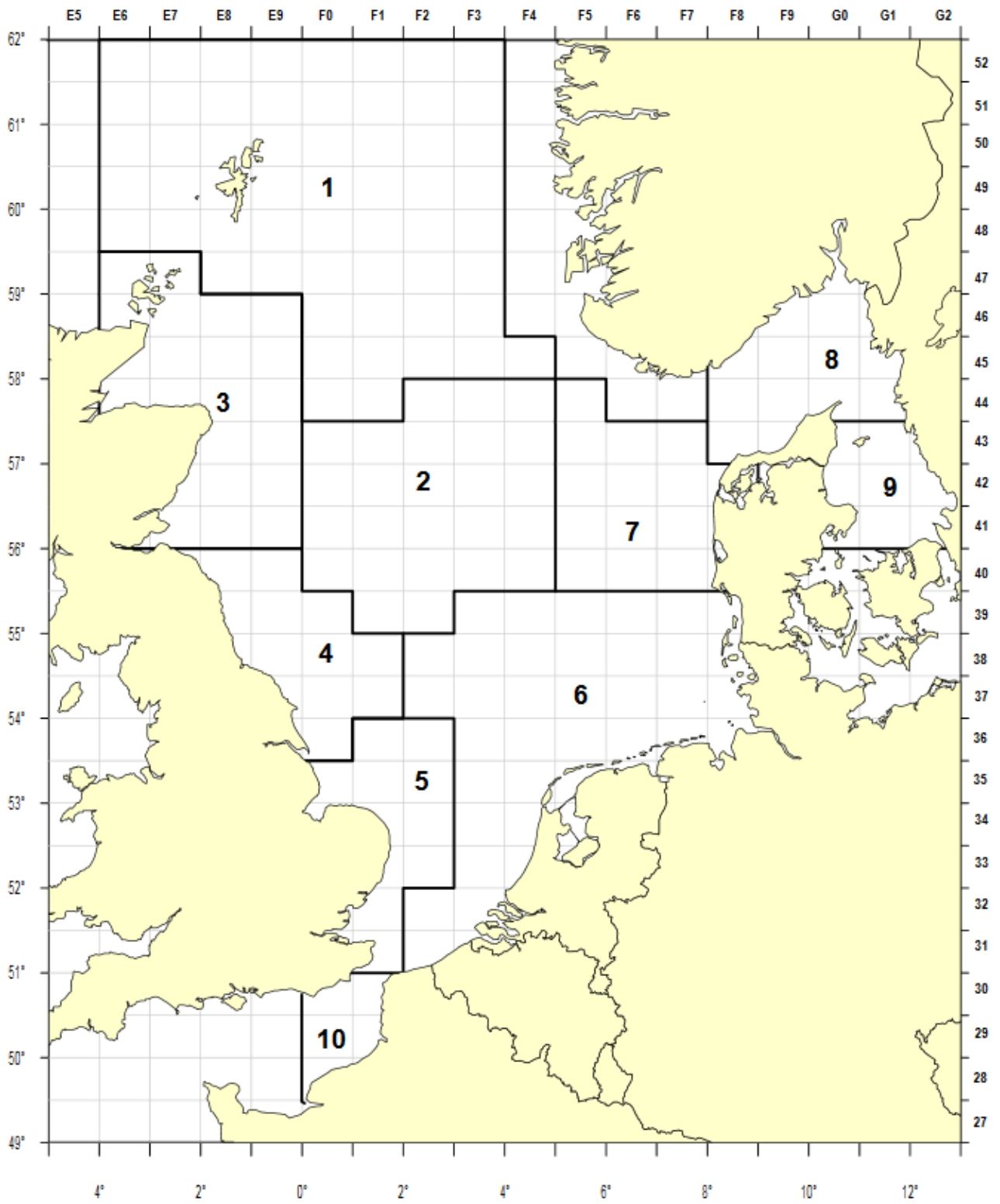
BITS

Baltic Sea with the ICES Subdivisions and rectangle codes



NS-IBTS

NS-IBTS Roundfish areas



IBTS Western and Southern Areas

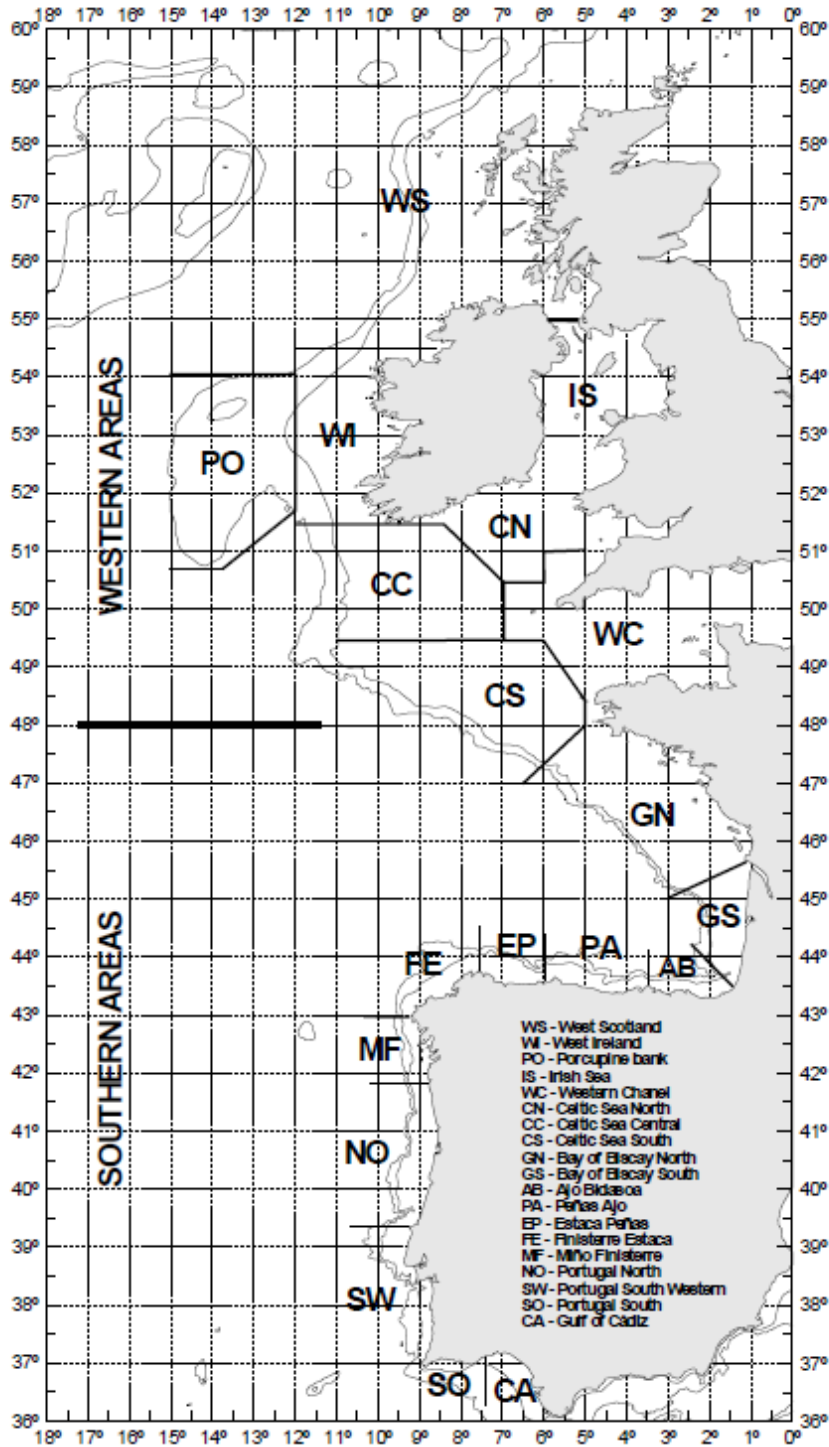
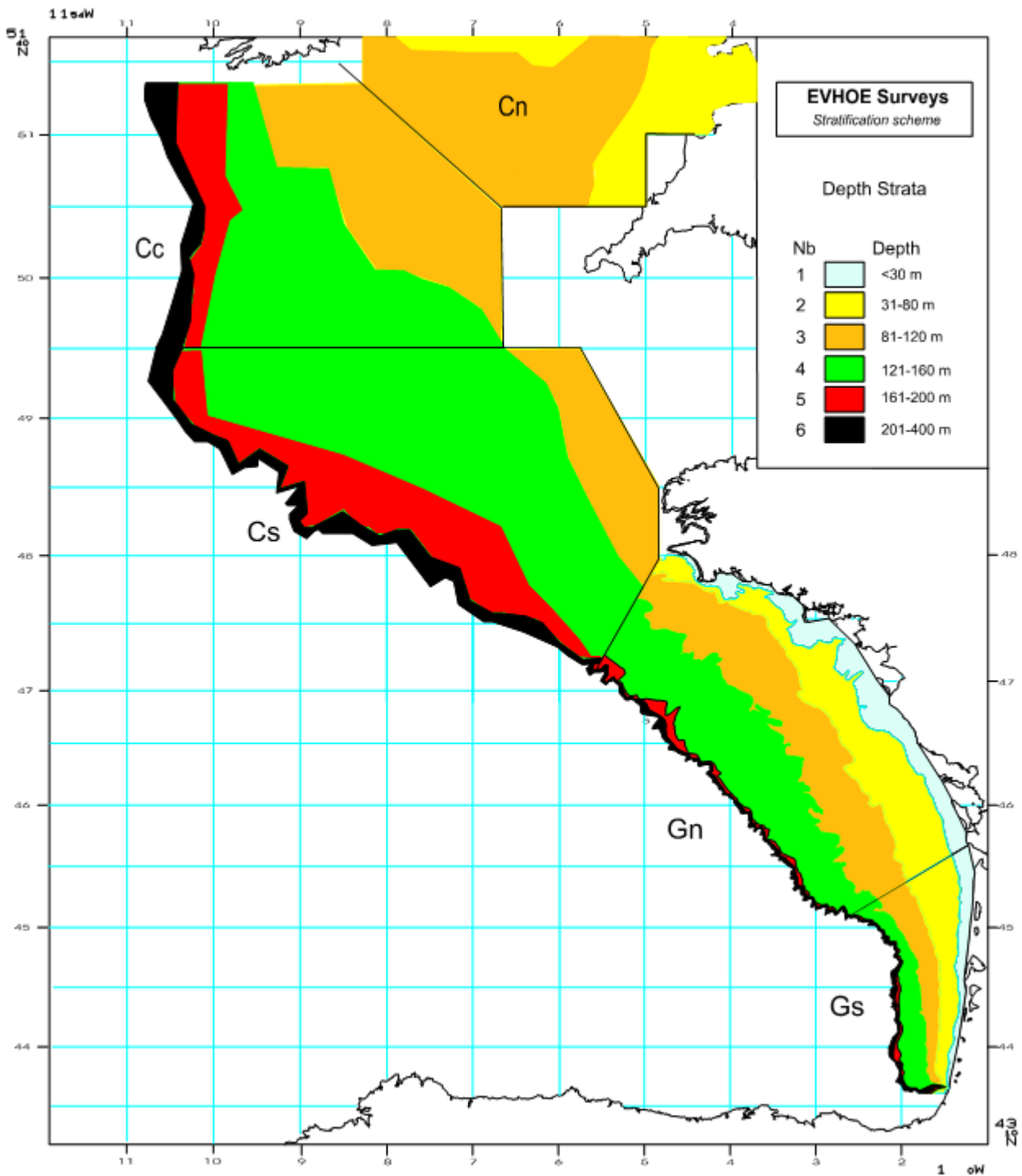


Figure 7.1. Coverage of the bottom-trawl surveys included in the Western and Southern areas and general geographic stratification used.

EVHOE



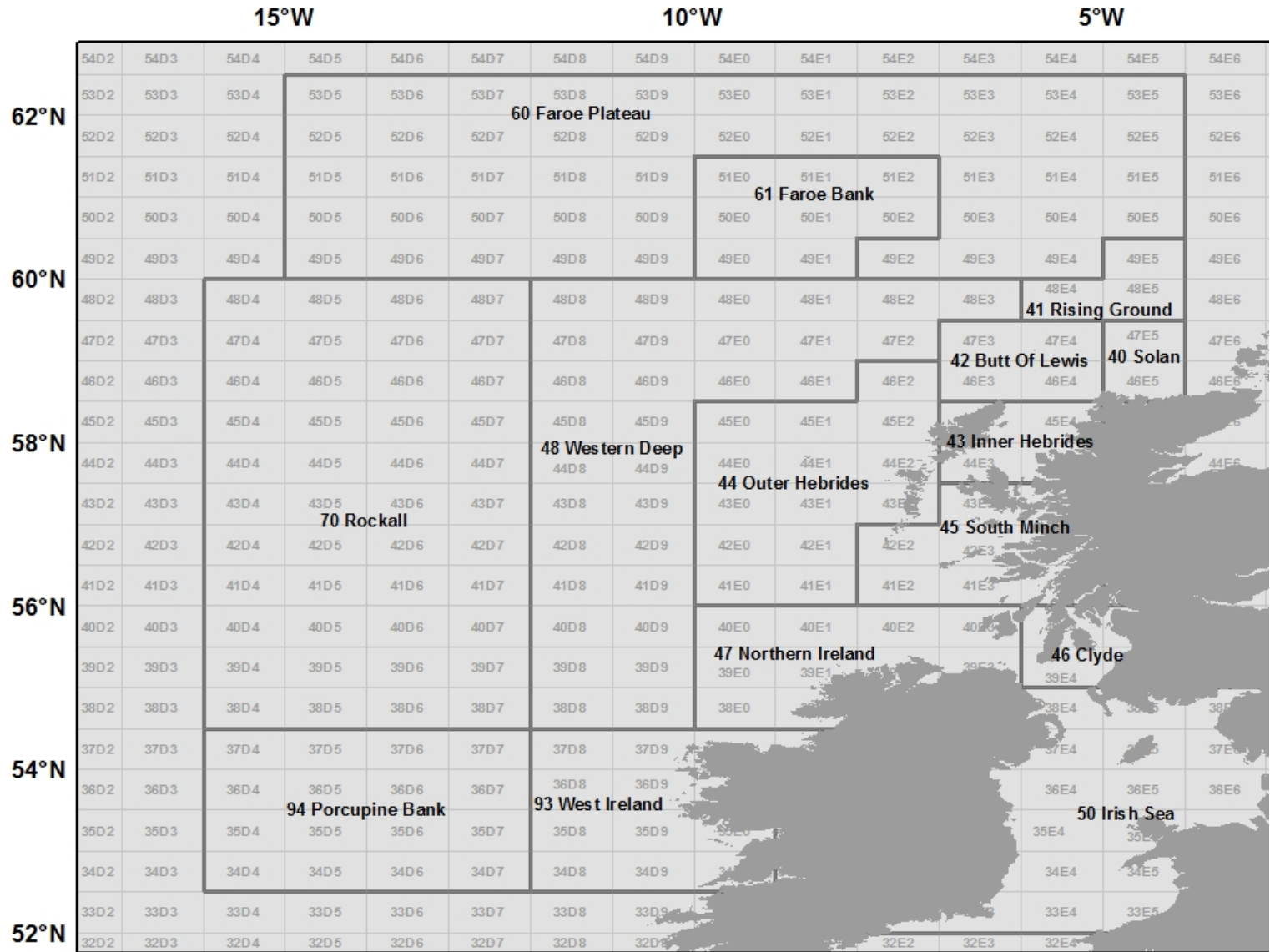
EVHOE area codes in the data products:

CL – Celtic sea total (CL = Cn + Cs + Cc)

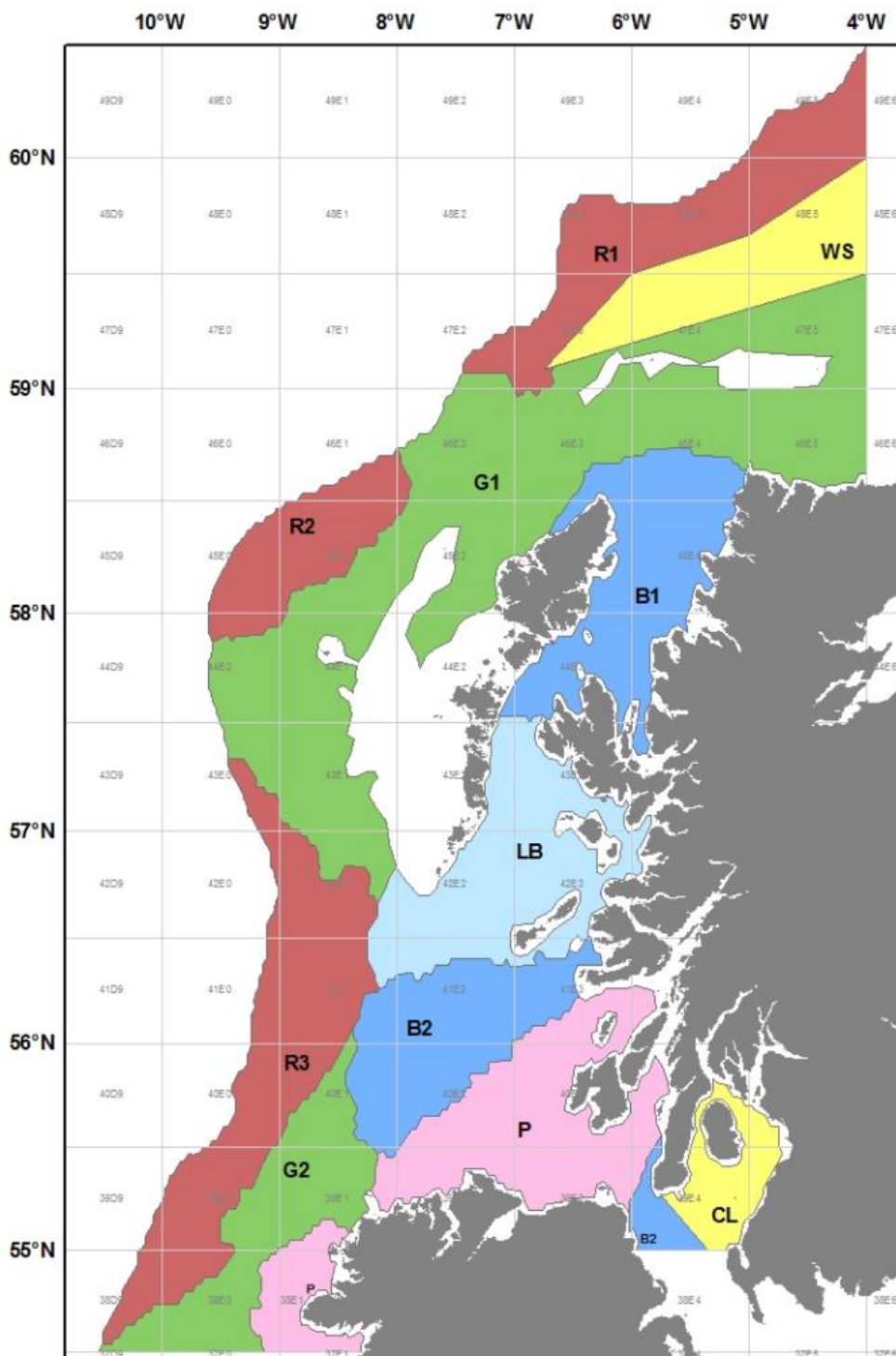
BB – Bay of Biscay total (BB = Gn + Gs)

EV – EVHOE total (EV = CL + BB = Cn + Cs + Cc + Gn + Gs)

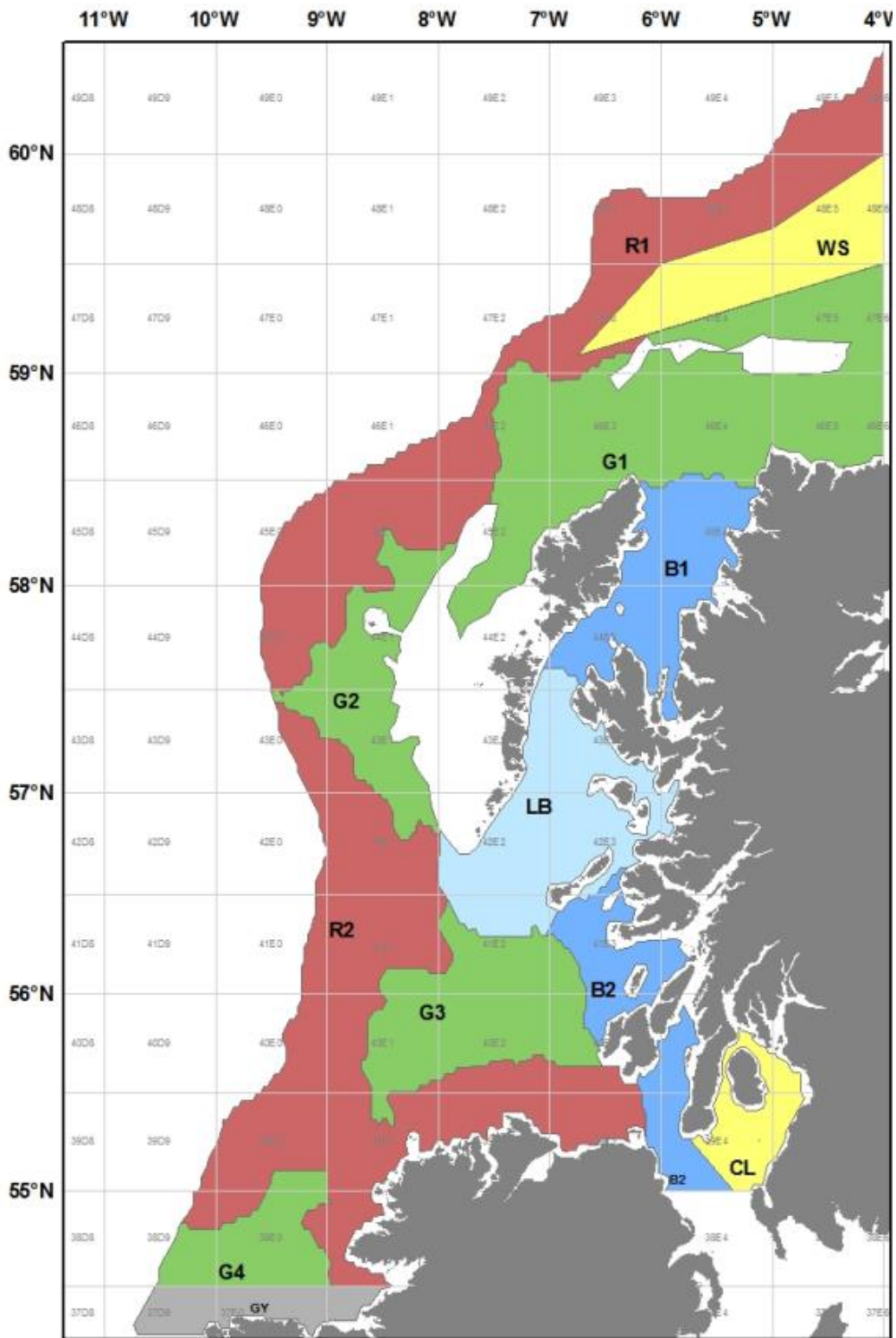
Scottish demersal areas (SWC-IBTS)



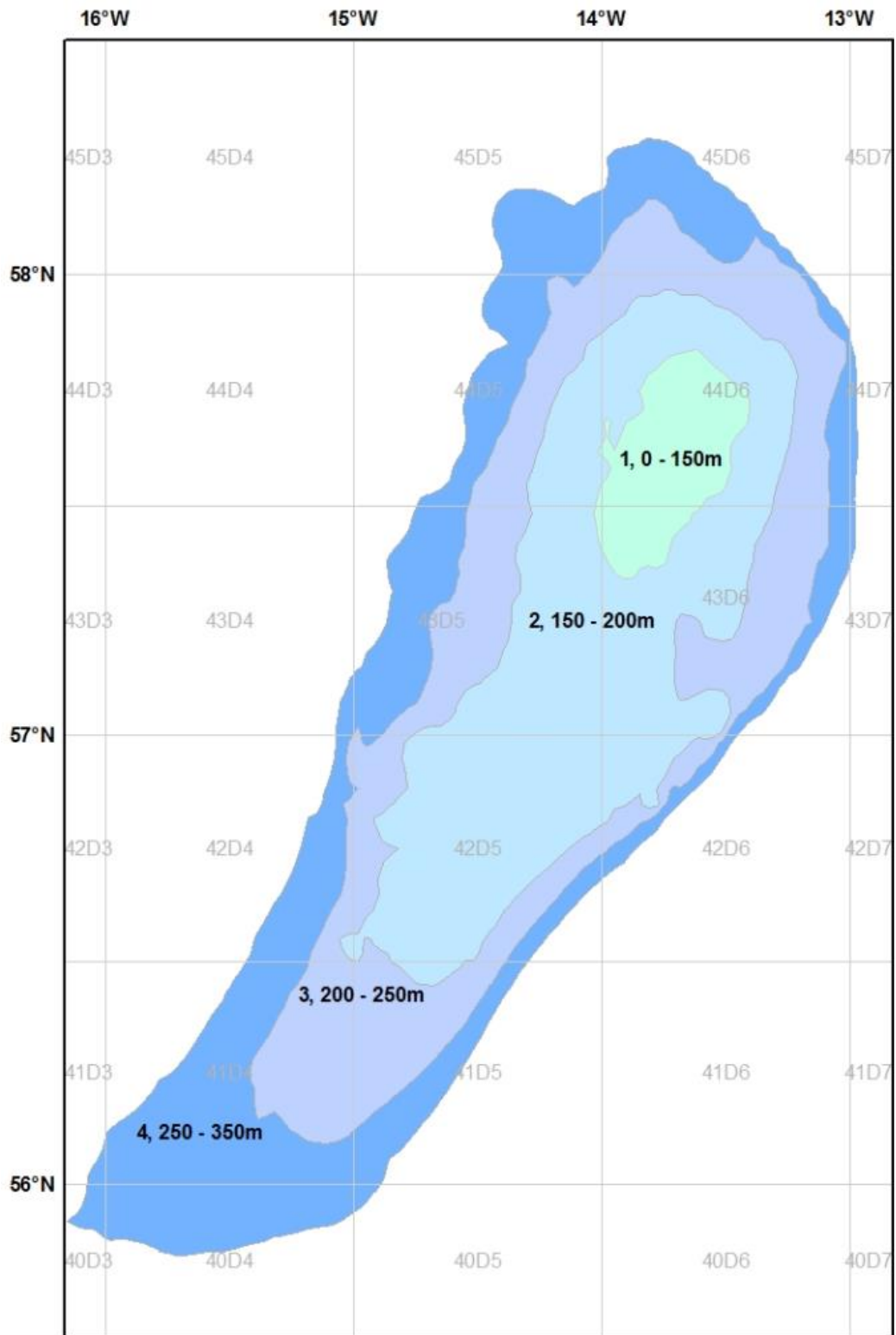
Scottish SCOWCGFS q1 strata



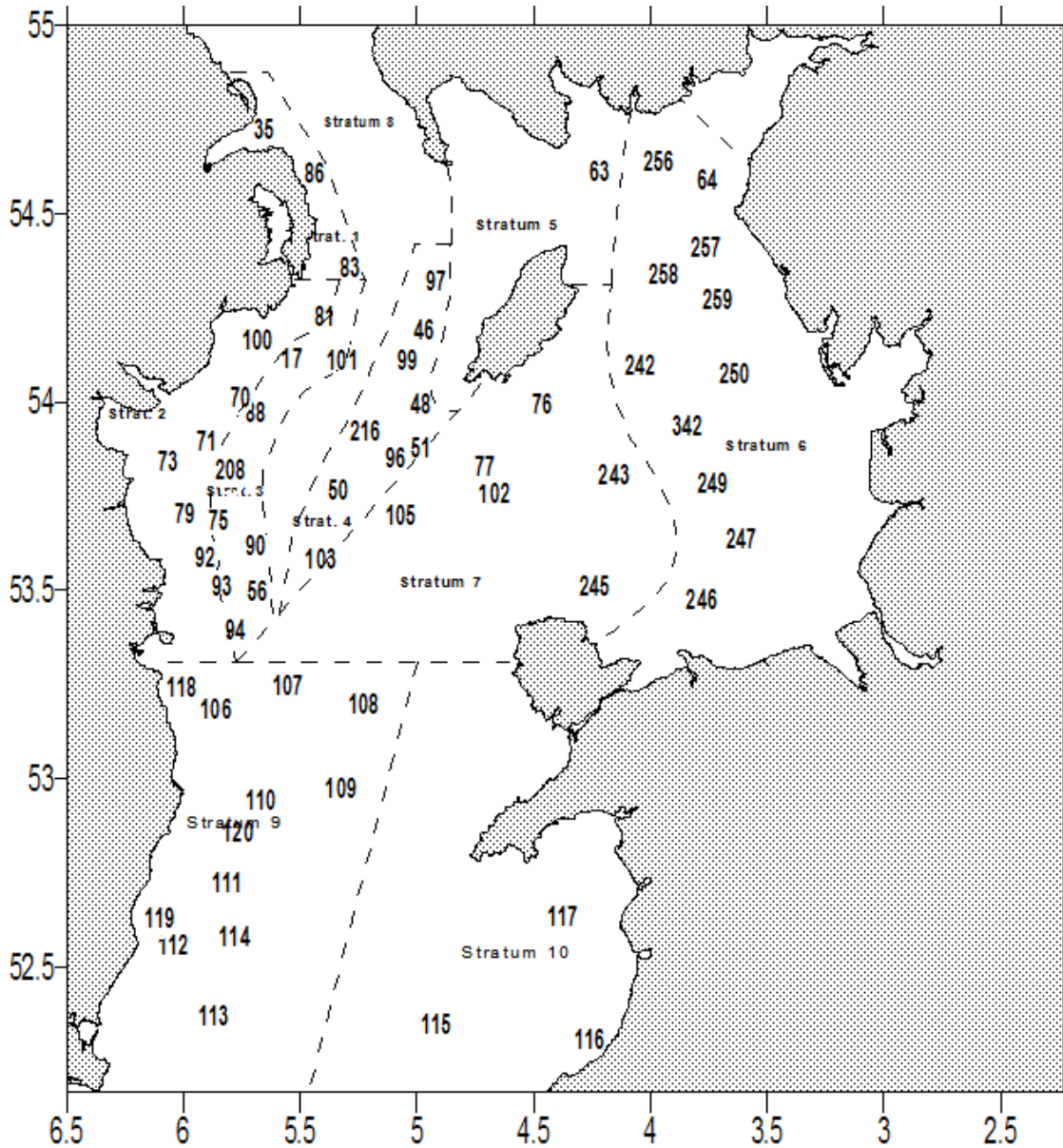
Scottish SCOWCGFS q4 strata



Scottish Rockall Survey strata



NIGFS areas



- Key to strata:
1. Irish Coast (N), <100m, Mixed sediments
 2. Irish Coast, < 50m, sand and finer sediments
 3. Irish Coast, 50 - 100m, Muddy sediments
 4. W and SW Isle of Man, 50 - 100m, mud and muddy sand
 5. N Isle of Man, <50m, gravel sediments
 6. Eastern Irish Sea, <50m, sand and finer sediments
 7. S. Isle of Man, <100m, gravel sediments
 8. Deep western channel and North Channel >100m
 9. St George's Channel west; sandy/mixed sediments; <100m
 10. St George's Channel east; sandy/mixed sediments; <100m

IGFS strata

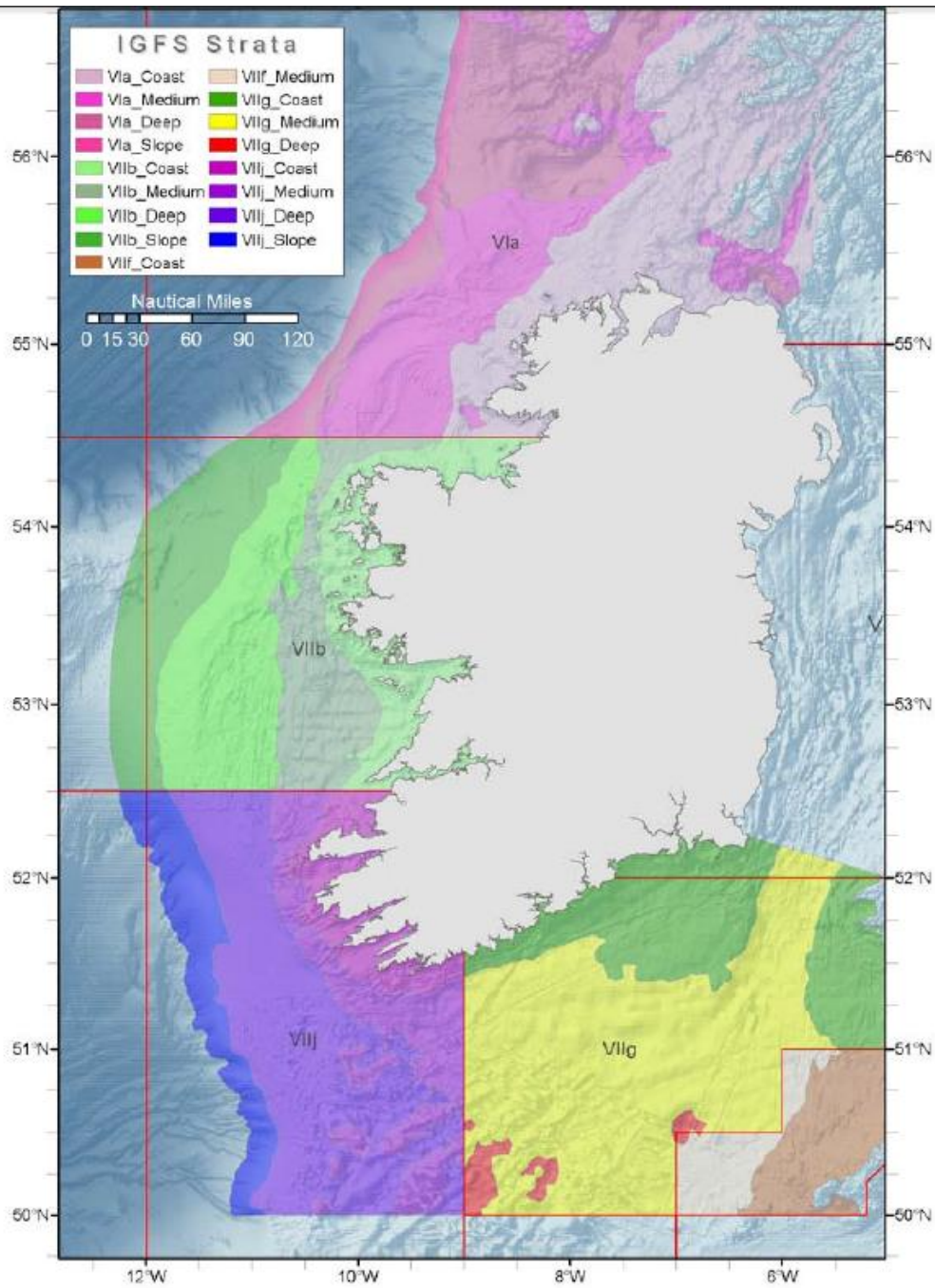


Figure 7.3.1. Map of IGFS strata from 2009. Coastal strata (20m-80m) was modified from 20m-75m as per IBTS for IGFS09, and new areas calculated. The new strata will be used to post stratify the IGFS for calculation of precision. Medium strata= 81m-120m; Deep strata=121m-200m; Slope strata=201m-600m.

Groundfish surveys

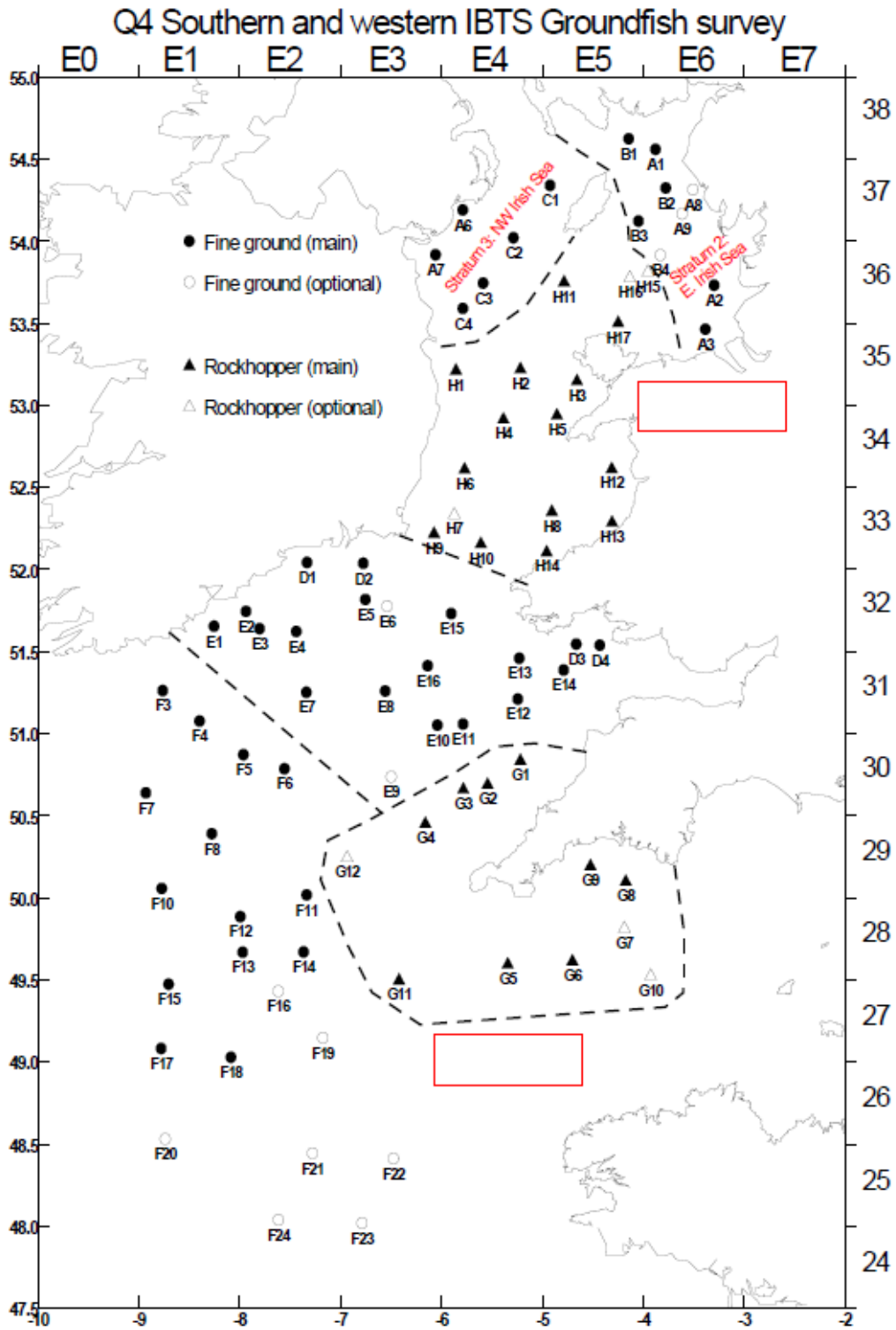


Figure 7.5.1. Survey grid for English westerly IBTS survey in Q4.

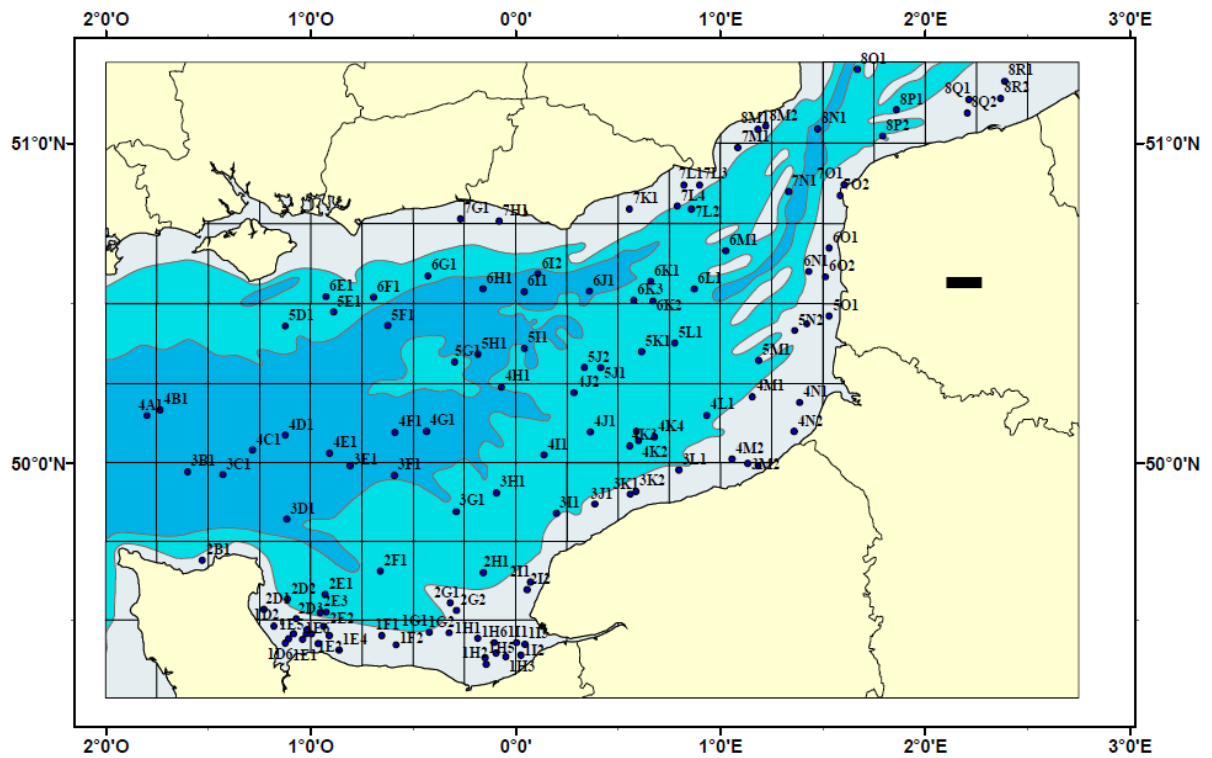


Figure 7.6.1. Area covered and ICES rectangles used in the stratification used in the French Channel groundfish Survey.

SP-NORTH (North of Spain) and SP-ARSA (in the Gulf of Cadiz)

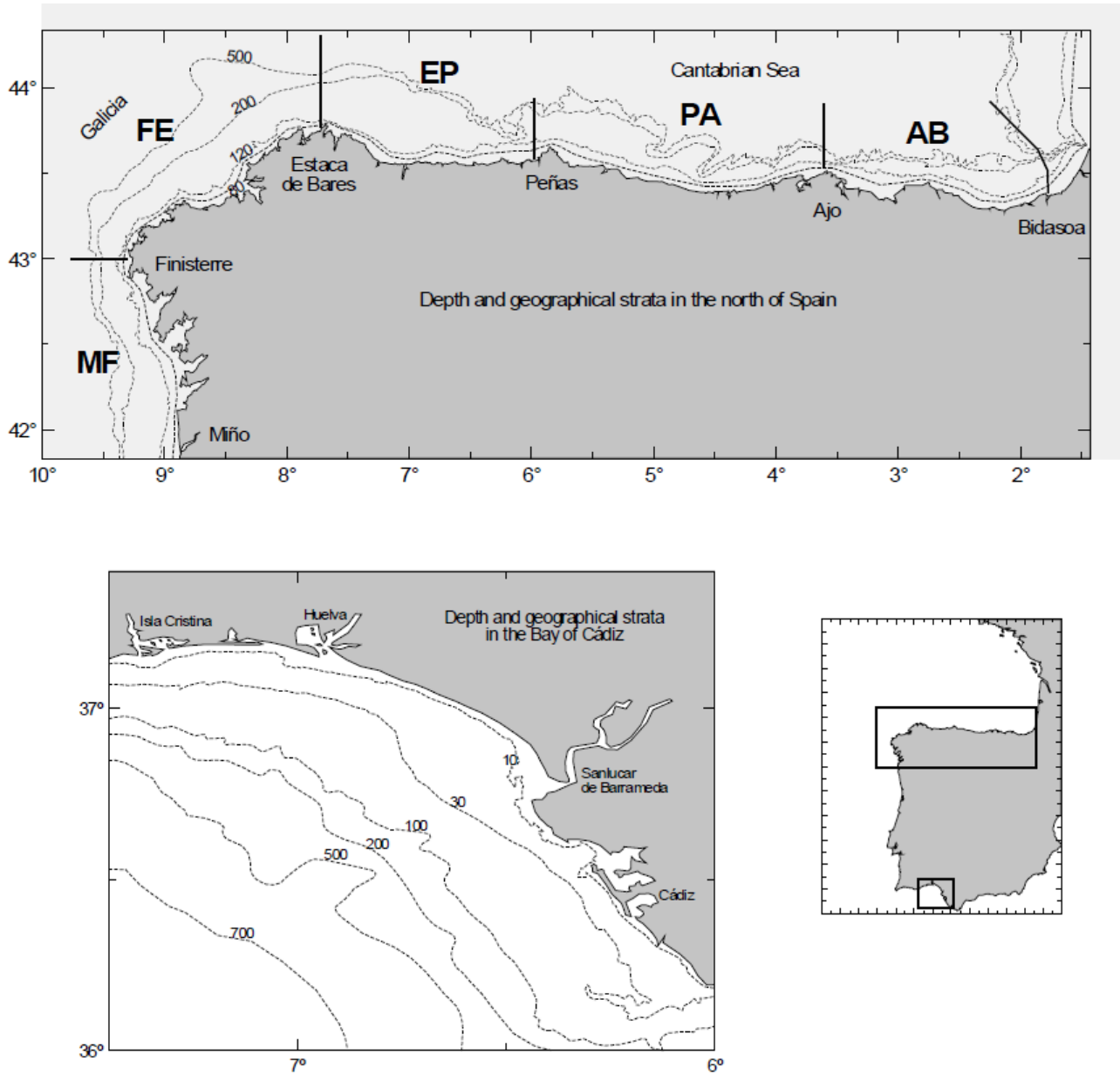


Figure 7.8.1. Stratification used in the Spanish surveys in the Iberian shelf.

SP-Porcupine

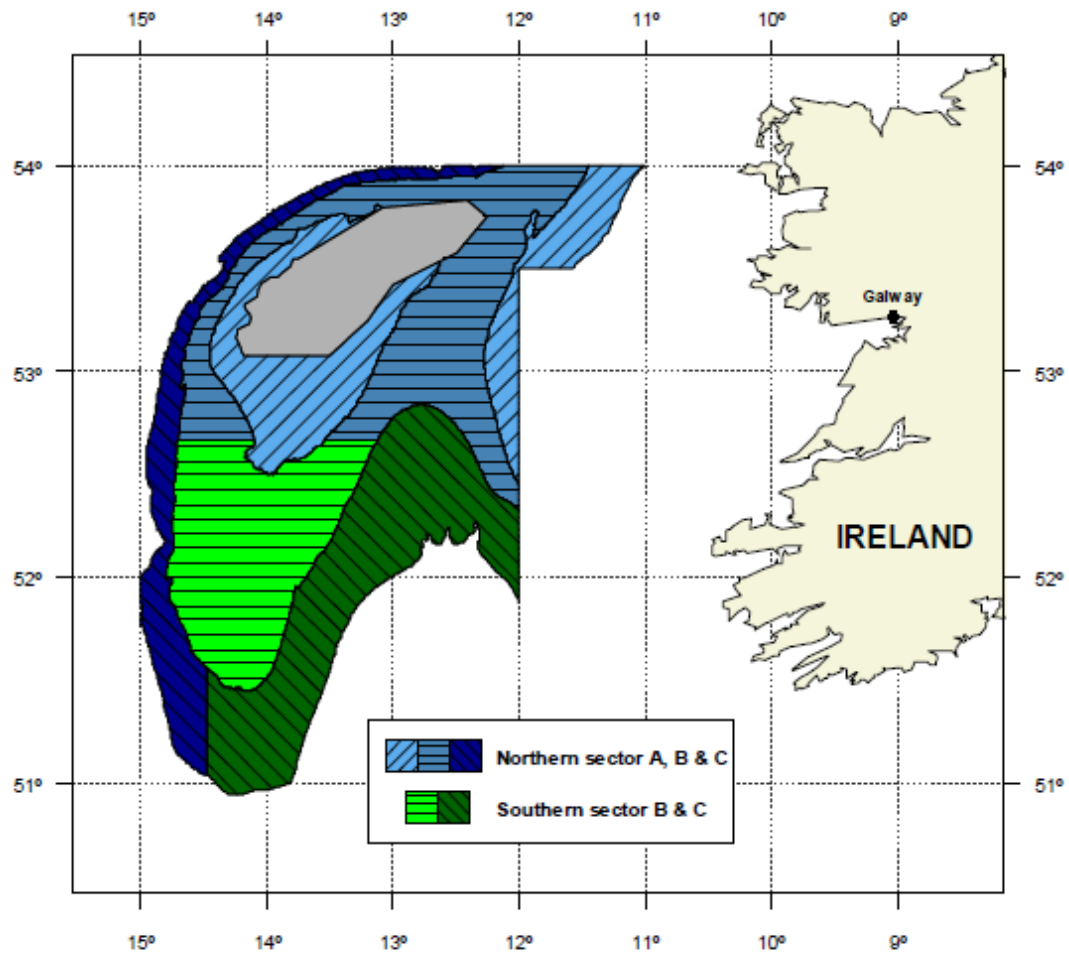


Figure 7.4.1. Stratification used in the Porcupine Spanish surveys. In each geographical strata bathymetric strata are: a) less than 300 m, b) 301–450 m and c) 451–800 m.

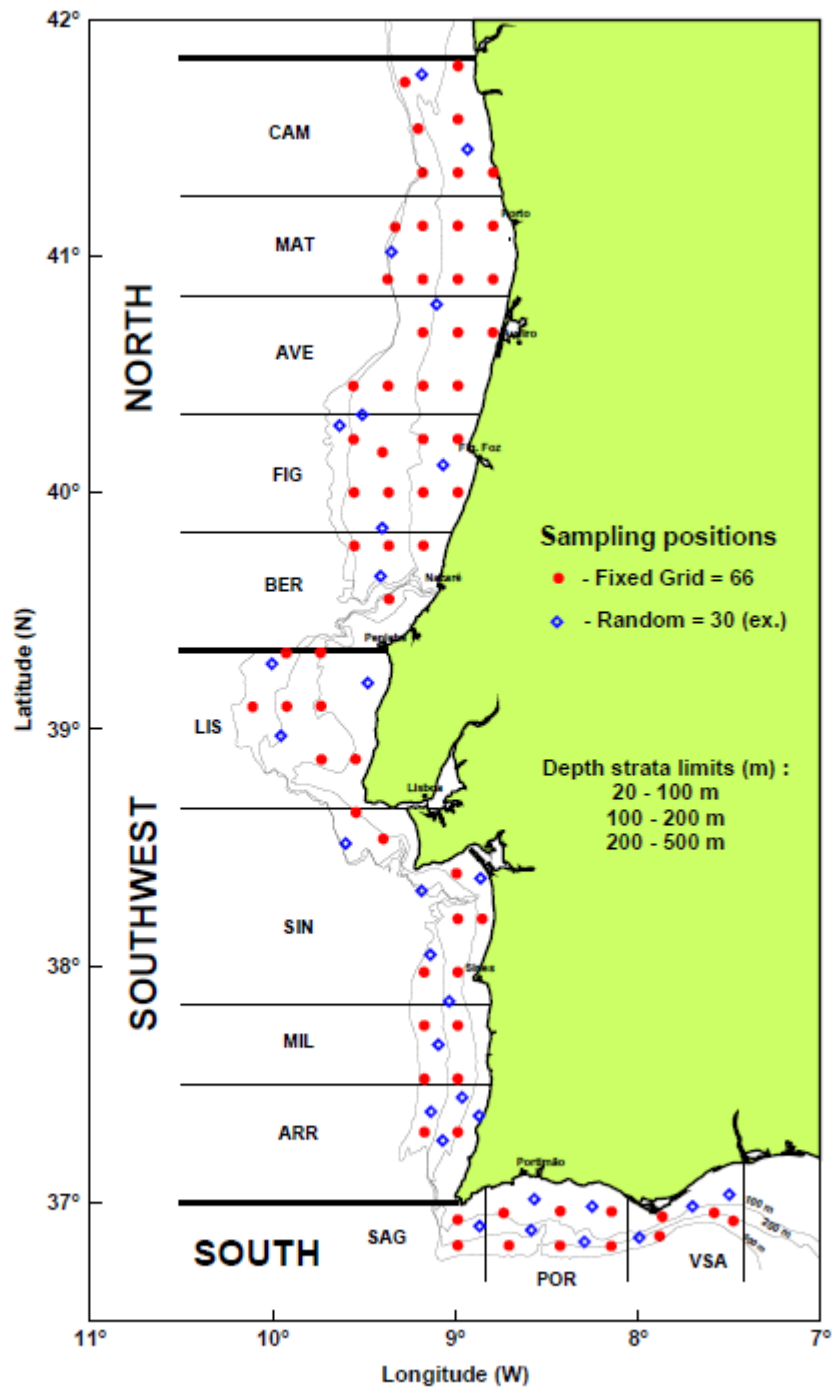
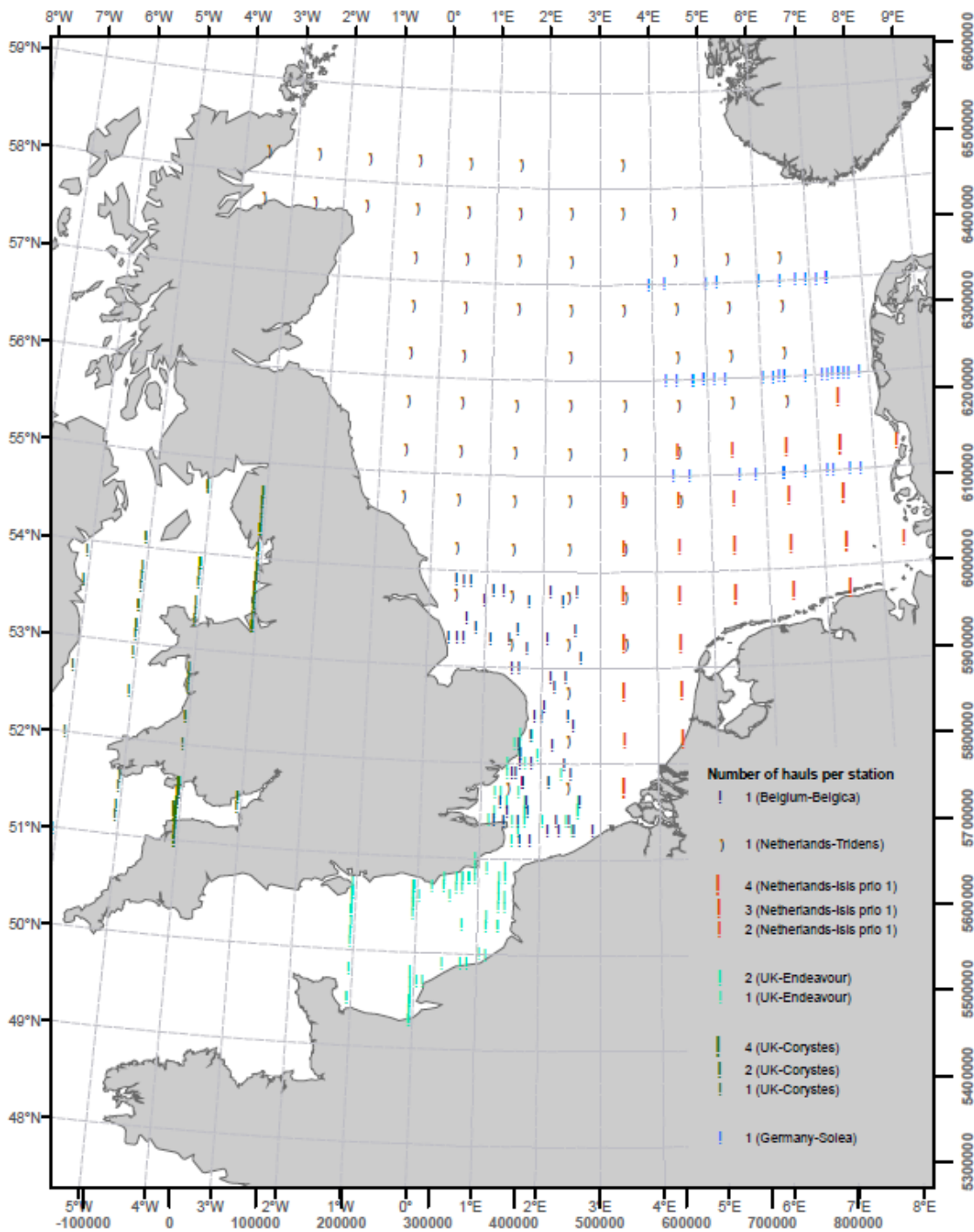


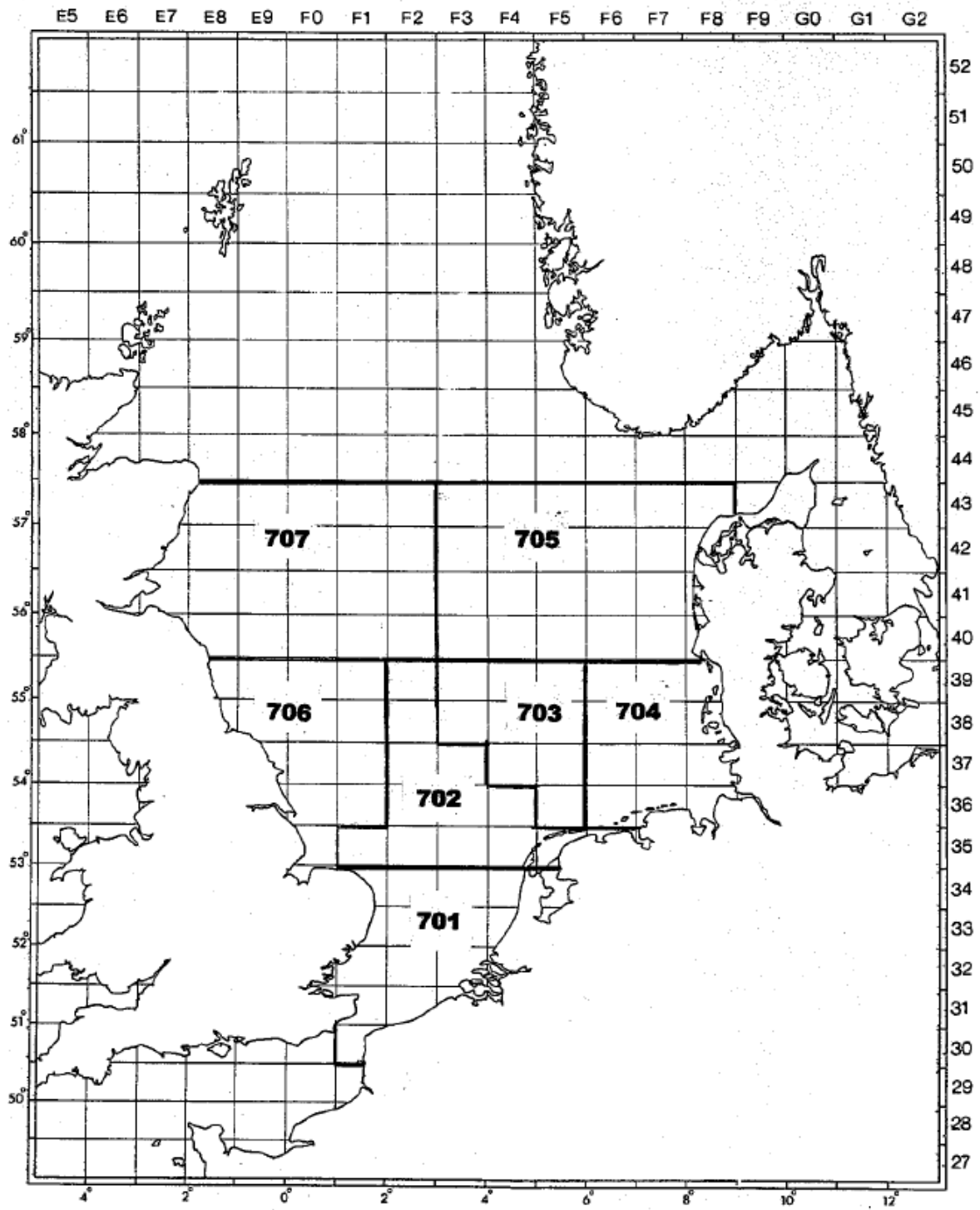
Figure 7.9.1. Sampling design used in the Portuguese surveys.

BTS

Geographic distribution of the offshore BTS surveys



BTS Otoliths Areas



BTS-VIII (ORHAGO)

Beam trawl survey in the Bay of Biscay (France)

